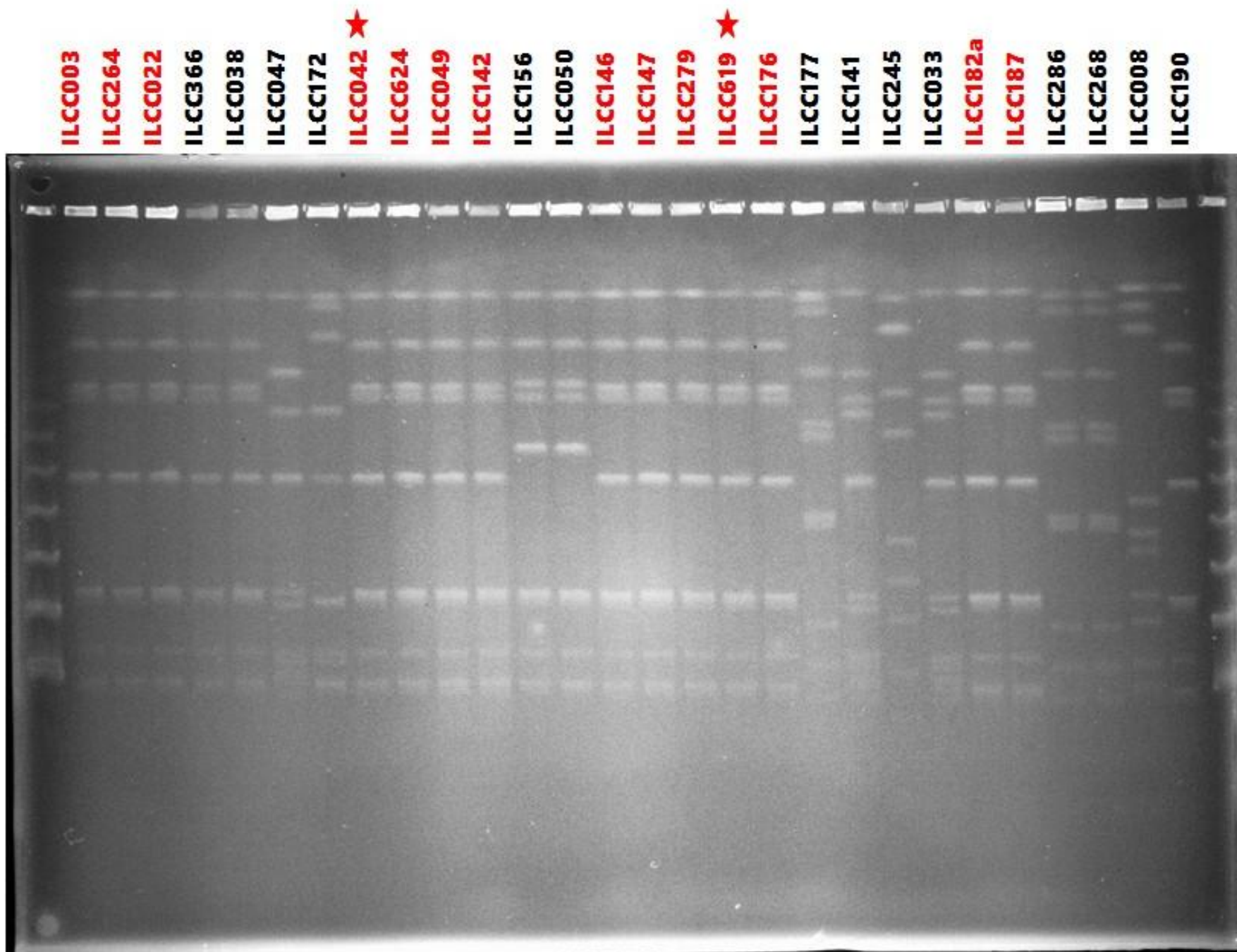
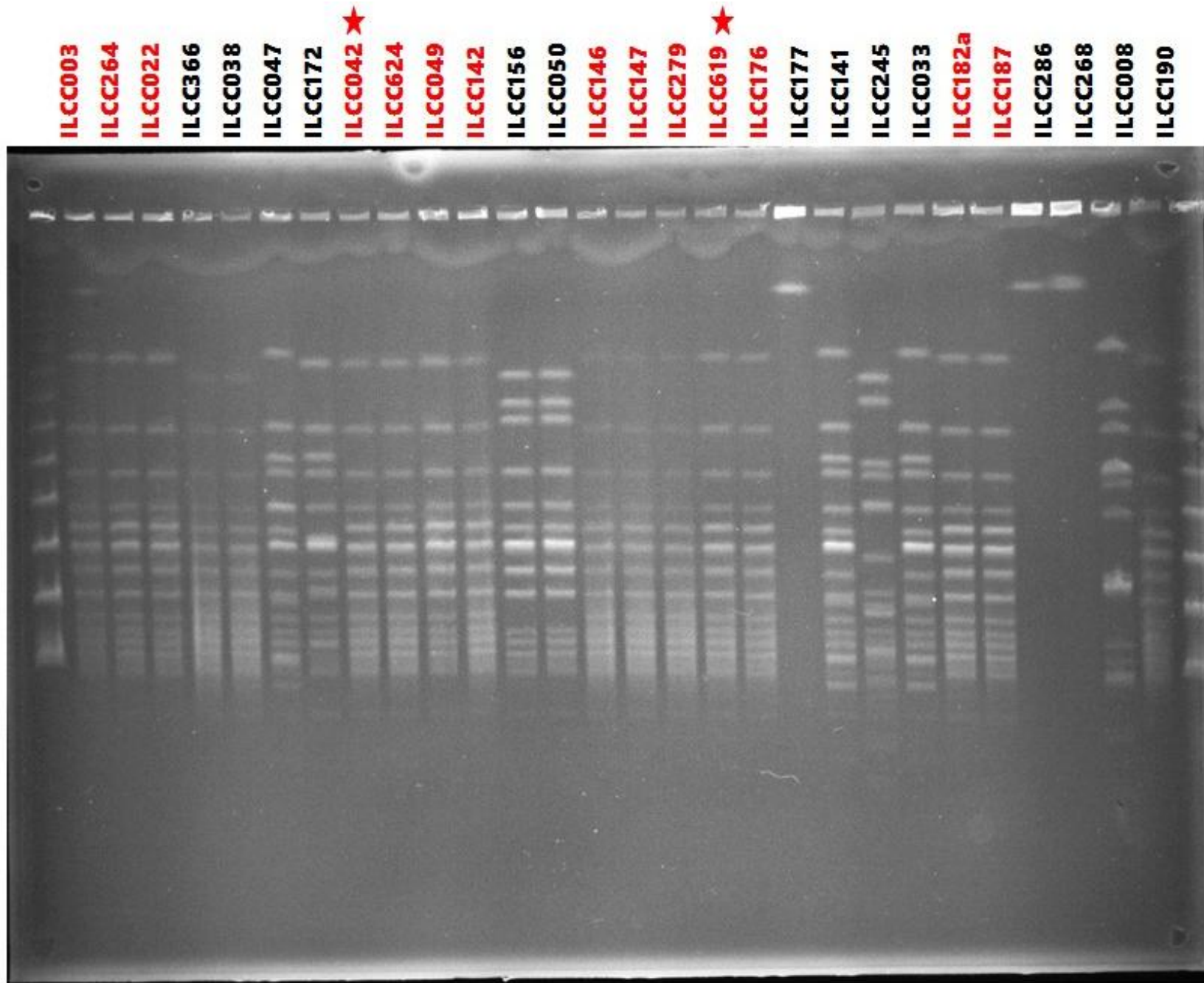


Suppl. Fig. 1: Asc I PFGE pattern of *L. monocytogenes* serotype 4b strain (set-A, 28 strains)

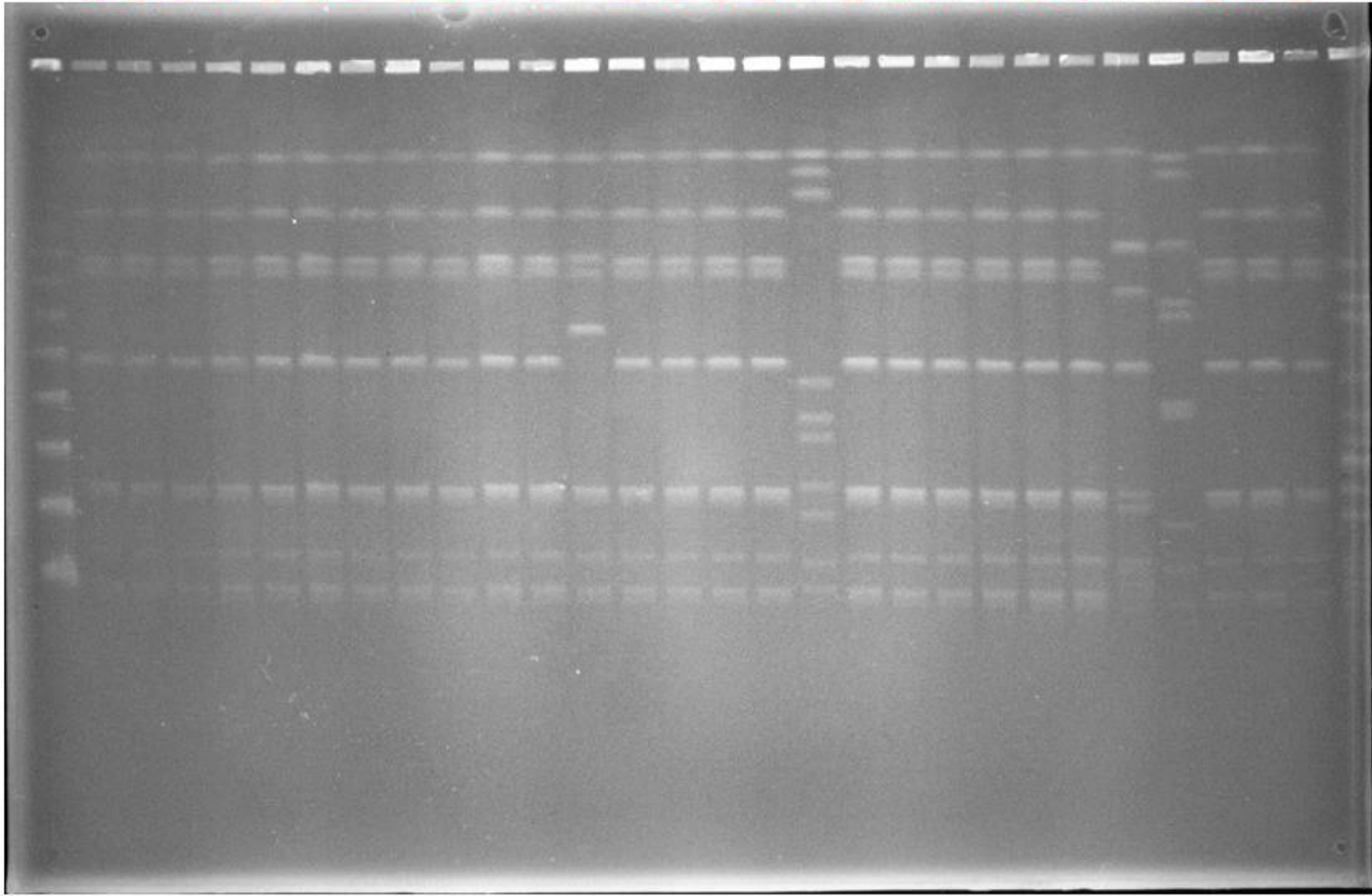


Suppl. Fig. 1 continued: *Apa* I PFGE pattern of *L. monocytogenes* serotype 4b strain (set-A, 28 strains)

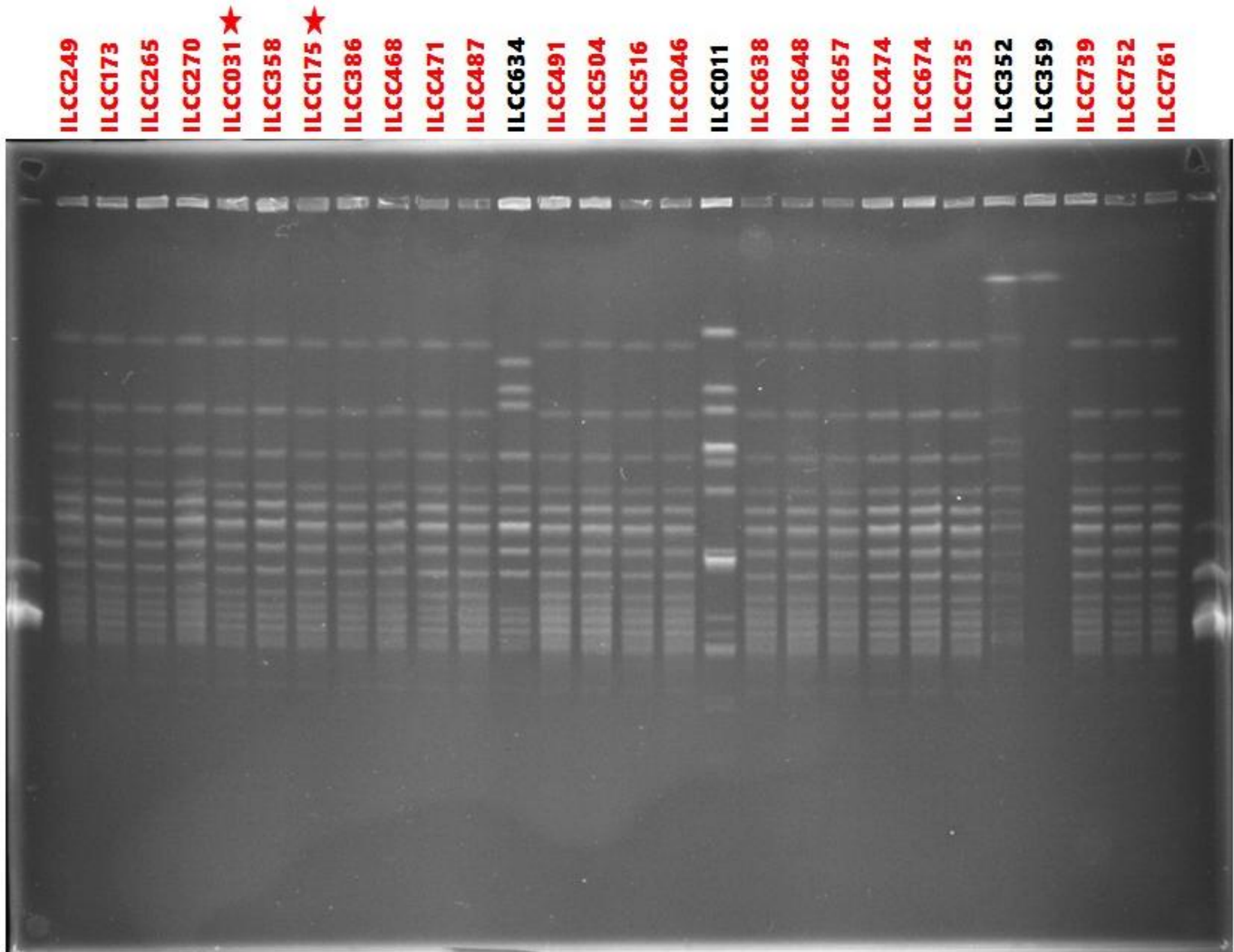


Suppl. Fig. 1 continued: Asc I PFGE pattern of *L. monocytogenes* serotype 4b strain (set-B, 28 strains)

LCC249
LCC173
LCC265
LCC270
LCC031 ★
LCC358
LCC175 ★
LCC386
LCC468
LCC471
LCC487
LCC634
LCC491
LCC504
LCC516
LCC046
LCC011
LCC638
LCC648
LCC657
LCC474
LCC674
LCC735
LCC352
LCC359
LCC739
LCC752
LCC761



Suppl. Fig. 1 continued: Suppl. Fig. 1 continued: *Apa* I PFGE pattern of *L. monocytogenes* serotype 4b strain (set-B, 28 strains)



Supplementary Figure S1: *AscI* and *ApaI* PFGE patterns of the *L. monocytogenes* serotype 4b strains. To confirm that the majority of the *L. monocytogenes* serotype 4b strains present across India are clonal, 56 additional serotype 4b strains were subjected to PFGE, and 39 of these strains exhibited the Ind-4b-dom-pulsotype (marked in red).