

CSD Entry: SUQGUJ


[Sign In \(/structures/login\)](/structures/login)

[New Search \(https://www.ccdc.cam.ac.uk/structures/?ccdc-check=249f1e9c9cc40cca7bd4aa411b6ea5a5\)](https://www.ccdc.cam.ac.uk/structures/?ccdc-check=249f1e9c9cc40cca7bd4aa411b6ea5a5)

Results

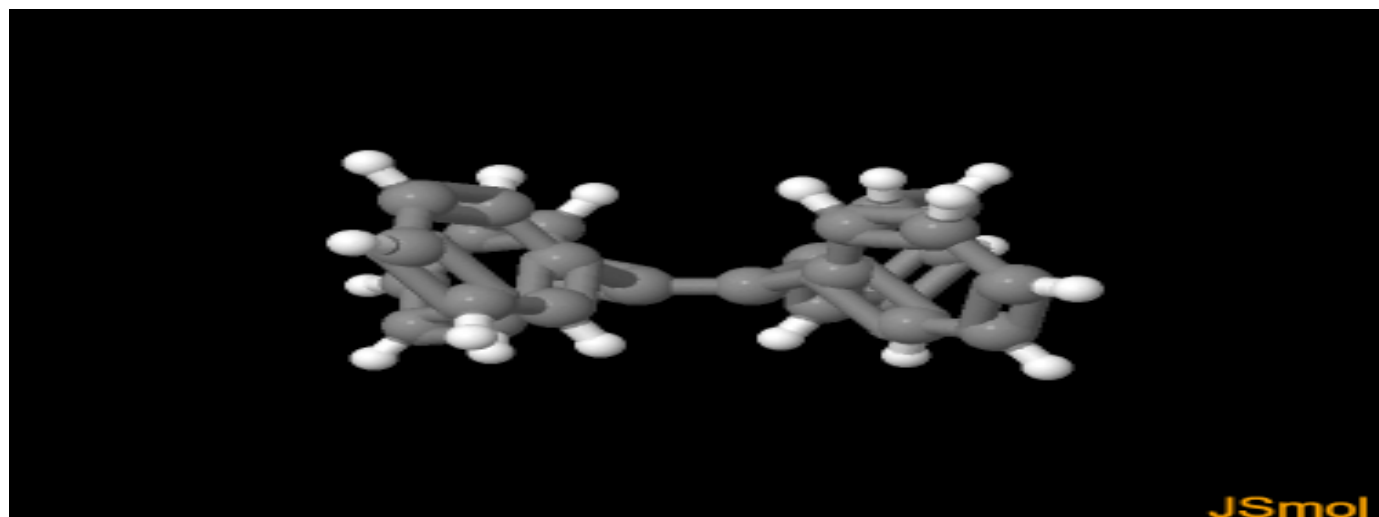
<input checked="" type="checkbox"/> Database Identifier	Deposition Number
<input checked="" type="checkbox"/> SUQGUJ	2011980

[Download ▾](#)

SUQGUJ : New Structure undergoing enhancement 

Space Group: C 2/c (15 (<http://it.iucr.org/cgi-bin/gotosgtable.pl?number=15&tabletype=S>)), **Cell:** a 17.790(12)Å b 6.020(4)Å c 17.697(11)Å, α 90° β 91.51(2)° γ 90°

3D viewer



H

Disorder

Menu

Open ▾



Style

Ball and Stick ▾

Labels

No Labels ▾

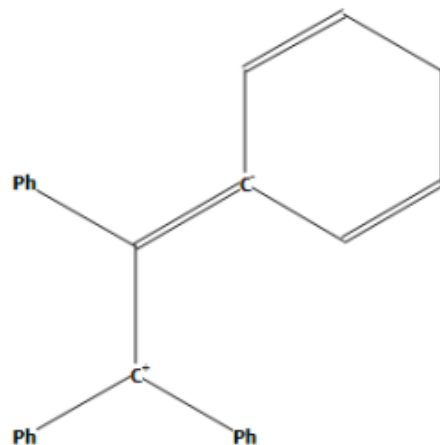
Packing

None ▾

Measure

None ▾

Chemical diagram



[View group symbols key](#)

Additional details

Deposition Number 2011980

Data Citation Kedar U Narvekar, Dinesh N. Nadimetala, Sheshanath V. Bhosale, Bikshandarkoil R Srinivasan CCDC 2011980: Experimental Crystal Structure Determination, 2020, DOI: 10.5517/ccdc.csd.cc25jmly ([//dx.doi.org/10.5517/ccdc.csd.cc25jmly](https://dx.doi.org/10.5517/ccdc.csd.cc25jmly))

Deposited on 24/06/2020

Crystallographer(s)

Crystallographer Bikshandarkoil R Srinivasan  ([//orcid.org/0000-0002-6598-6726](https://orcid.org/0000-0002-6598-6726))

Affiliation Goa University

Associated publications

Kedar U Narvekar, Dinesh N. Nadimetala, Sheshanath V. Bhosale, Bikshandarkoil R Srinivasan, *CSD Communication*, 2020

[CCDC Home \(https://www.ccdc.cam.ac.uk/\)](https://www.ccdc.cam.ac.uk/)

[Deposit Structures \(https://www.ccdc.cam.ac.uk/deposit\)](https://www.ccdc.cam.ac.uk/deposit)

[Access Structures \(https://www.ccdc.cam.ac.uk/structures\)](https://www.ccdc.cam.ac.uk/structures)

[About This Service \(https://www.ccdc.cam.ac.uk/access-structures-terms/\)](https://www.ccdc.cam.ac.uk/access-structures-terms/)