

CSD Entry: XUQSOU

[Sign In \(/structures/login\)](/structures/login)

[New Search \(https://www.ccdc.cam.ac.uk/structures/?ccdc-check=47e7bcf2f218dd3053b06394e346494a\)](https://www.ccdc.cam.ac.uk/structures/?ccdc-check=47e7bcf2f218dd3053b06394e346494a)

Results

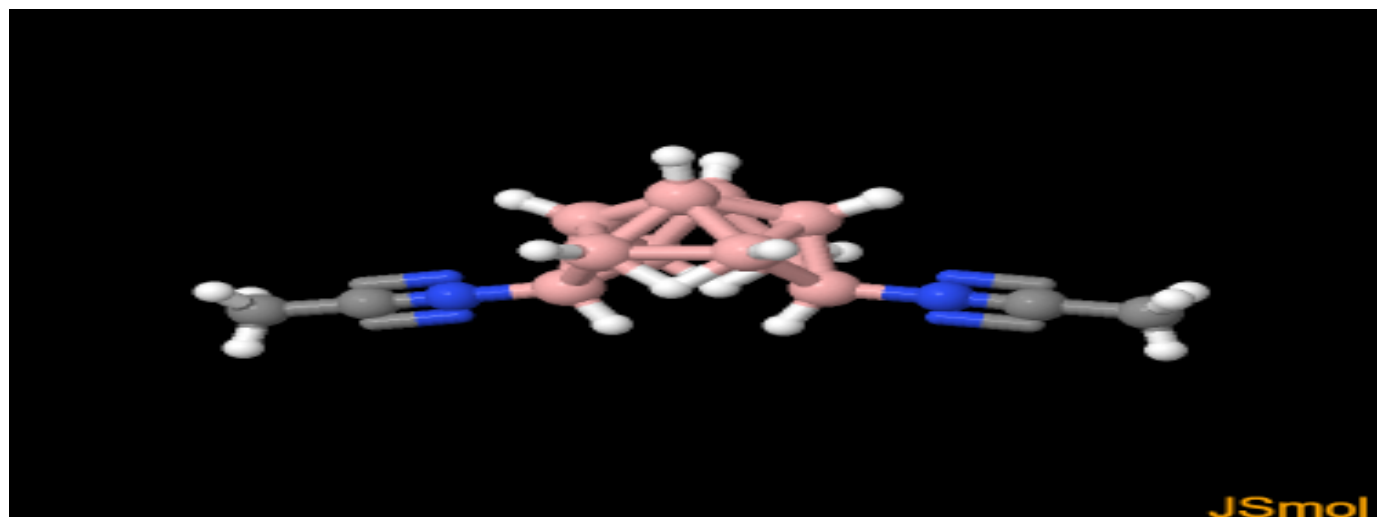
<input checked="" type="checkbox"/> Database Identifier	Deposition Number
<input checked="" type="checkbox"/> XUQSOU	2013204

[Download ▾](#)

XUQSOU : New Structure undergoing enhancement ⓘ

Space Group: C 2/c (15 (<http://it.iucr.org/cgi-bin/gotosgtable.pl?number=15&tabletype=S>)), **Cell:** a 15.2349(8)Å b 11.1828(6)Å c 7.7676(4)Å, α 90° β 112.877(2)° γ 90°

3D viewer



H

Disorder

Menu

Open ▾



Style

Labels

Packing

Measure

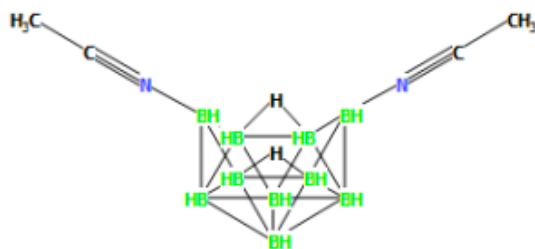
Ball and Stick ▾


No Labels ▾

None ▾

None ▾

Chemical diagram




 [View group symbols key](#)

Additional details

Deposition Number	2013204
Data Citation	Kedar U. Narvekar, Vishal M. Pawar, Vishnu S. Nadkarni, Bikshandarkoil R Srinivasan CCDC 2013204: Experimental Crystal Structure Determination, 2020, DOI: 10.5517/ccdc.csd.cc25kx2r (//dx.doi.org/10.5517/ccdc.csd.cc25kx2r)
Deposited on	30/06/2020

Crystallographer(s)

Crystallographer	Bikshandarkoil R Srinivasan  (//orcid.org/0000-0002-6598-6726)
Affiliation	School of Chemical Sciences, Goa University

Associated publications

Kedar U. Narvekar, Vishal M. Pawar, Vishnu S. Nadkarni, Bikshandarkoil R Srinivasan, *CSD Communication*, 2020

[CCDC Home \(https://www.ccdc.cam.ac.uk/\)](https://www.ccdc.cam.ac.uk/)

[Deposit Structures \(https://www.ccdc.cam.ac.uk/deposit\)](https://www.ccdc.cam.ac.uk/deposit)

[Access Structures \(https://www.ccdc.cam.ac.uk/structures\)](https://www.ccdc.cam.ac.uk/structures)

[About This Service \(https://www.ccdc.cam.ac.uk/access-structures-terms/\)](https://www.ccdc.cam.ac.uk/access-structures-terms/)