

CSD Entry: KUTNEV

[Sign In \(/structures/login\)](/structures/login)

[New Search \(https://www.ccdc.cam.ac.uk/structures/?ccdc-check=249f1e9c9cc40cca7bd4aa411b6ea5a5\)](https://www.ccdc.cam.ac.uk/structures/?ccdc-check=249f1e9c9cc40cca7bd4aa411b6ea5a5)

Results

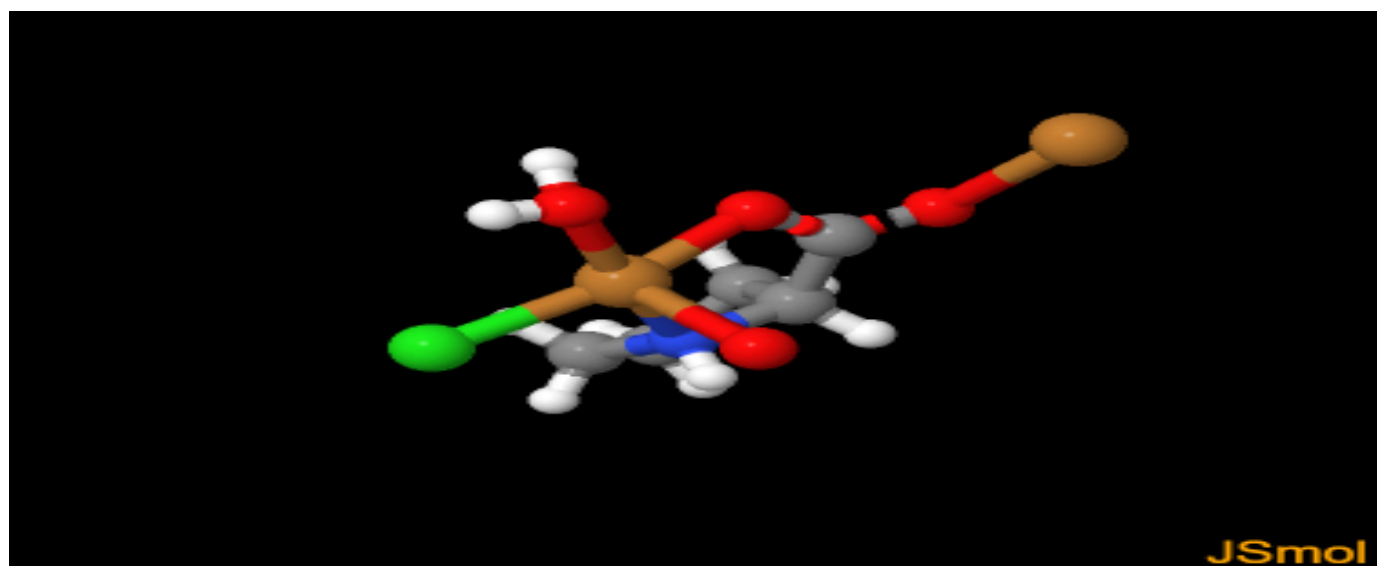
<input checked="" type="checkbox"/> Database Identifier	Deposition Number
<input checked="" type="checkbox"/> KUTNEV	2014925

[Download ▾](#)

KUTNEV : New Structure undergoing enhancement ⓘ

Space Group: $P 2_1 (4)$ (<http://it.iucr.org/cgi-bin/gotosgtable.pl?number=4&tabletype=S>), **Cell:** a 8.2102(5)Å b 5.2205(3)Å c 9.5354(6)Å, α 90° β 109.394(2)° γ 90°

3D viewer



JSmol

H

Disorder

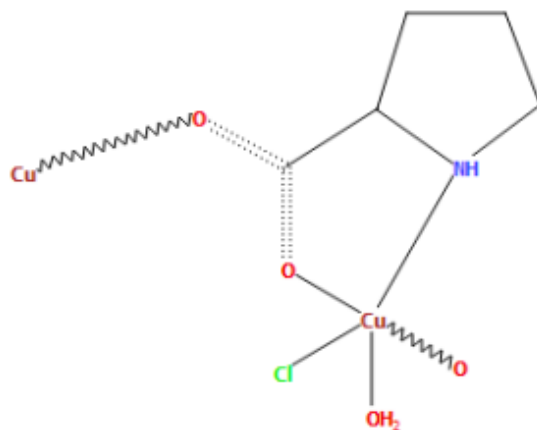
Menu

Open ▾



Style Labels Packing Measure
Ball and Stick No Labels None None

Chemical diagram




[View group symbols key](#)

Additional details

Deposition Number	2014925
Data Citation	Kedar U. Narvekar, Bikshandarkoil R Srinivasan CCDC 2014925: Experimental Crystal Structure Determination, 2020, DOI: 10.5517/ccdc.csd.cc25mpl3 (//dx.doi.org/10.5517/ccdc.csd.cc25mpl3)
Deposited on	08/07/2020

Crystallographer(s)

Crystallographer	Bikshandarkoil R Srinivasan  (//orcid.org/0000-0002-6598-6726)
Affiliation	School of Chemical Sciences, Goa University

Associated publications

Kedar U. Narvekar, Bikshandarkoil R Srinivasan, *CSD Communication*, 2020

[CCDC Home \(https://www.ccdc.cam.ac.uk/\)](https://www.ccdc.cam.ac.uk/)

[Deposit Structures \(https://www.ccdc.cam.ac.uk/deposit\)](https://www.ccdc.cam.ac.uk/deposit)

[Access Structures \(https://www.ccdc.cam.ac.uk/structures\)](https://www.ccdc.cam.ac.uk/structures)

[About This Service \(https://www.ccdc.cam.ac.uk/access-structures-terms/\)](https://www.ccdc.cam.ac.uk/access-structures-terms/)

[Terms & Conditions \(https://www.ccdc.cam.ac.uk/TermsAndConditions/\)](https://www.ccdc.cam.ac.uk/TermsAndConditions/)