

CSD Entry: KUVFEP

[Sign In \(/structures/login\)](/structures/login)

[New Search \(https://www.ccdc.cam.ac.uk/structures/?ccdc-check=249f1e9c9cc40cca7bd4aa411b6ea5a5\)](https://www.ccdc.cam.ac.uk/structures/?ccdc-check=249f1e9c9cc40cca7bd4aa411b6ea5a5)

Results

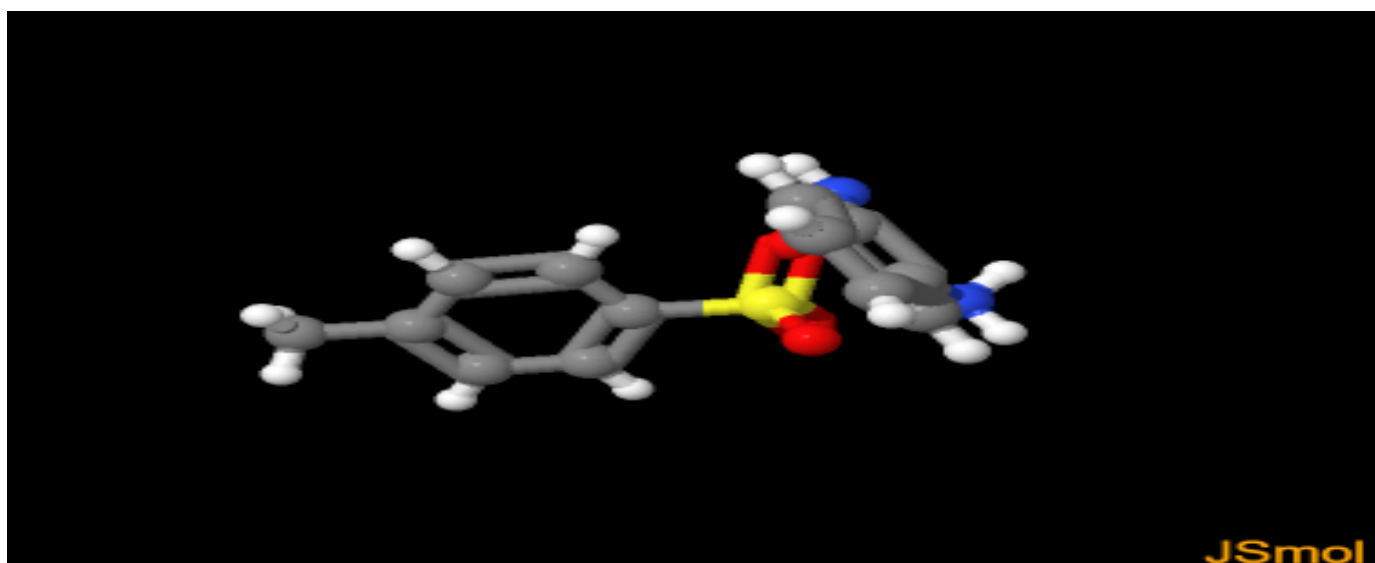
<input checked="" type="checkbox"/>	Database Identifier	Deposition Number
<input checked="" type="checkbox"/>	KUVFEP	2015073

[Download ▾](#)

KUVFEP : New Structure undergoing enhancement ⓘ

Space Group: P 2₁/n (14 (<http://it.iucr.org/cgi-bin/gotosgtable.pl?number=14&tabletype=S>)), **Cell:** a 14.6376(5)Å
b 5.7102(2)Å c 17.5276(6)Å, α 90° β 102.3430(10)° γ 90°

3D viewer



JSmol

H

Disorder

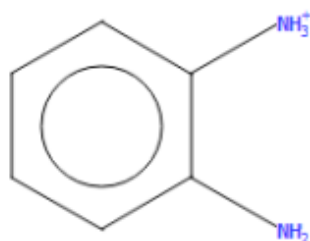
Menu

Open ▾



Style Labels Packing Measure
Ball and Stick No Labels None None

Chemical diagram




[View group symbols key](#)

Additional details

Deposition Number	2015073
Data Citation	Kedar U Narvekar, Bikshandarkoil R Srinivasan CCDC 2015073: Experimental Crystal Structure Determination, 2020, DOI: 10.5517/ccdc.csd.cc25mvc1 (//dx.doi.org/10.5517/ccdc.csd.cc25mvc1)
Deposited on	08/07/2020

Crystallographer(s)

Crystallographer	Bikshandarkoil R Srinivasan  (//orcid.org/0000-0002-6598-6726)
Affiliation	School of Chemical Sciences, Goa University

Associated publications

Kedar U Narvekar, Bikshandarkoil R Srinivasan, *CSD Communication*, 2020

[CCDC Home \(https://www.ccdc.cam.ac.uk/\)](https://www.ccdc.cam.ac.uk/)

[Deposit Structures \(https://www.ccdc.cam.ac.uk/deposit\)](https://www.ccdc.cam.ac.uk/deposit)

[Access Structures \(https://www.ccdc.cam.ac.uk/structures\)](https://www.ccdc.cam.ac.uk/structures)

[About This Service \(https://www.ccdc.cam.ac.uk/access-structures-terms/\)](https://www.ccdc.cam.ac.uk/access-structures-terms/)

[Terms & Conditions \(https://www.ccdc.cam.ac.uk/TermsAndConditions/\)](https://www.ccdc.cam.ac.uk/TermsAndConditions/)