

CSD Entry: MUXPAZ

[Sign In \(/structures/login\)](/structures/login)[New Search \(https://www.ccdc.cam.ac.uk/structures/?ccdc-check=47e7bcf2f218dd3053b06394e346494a\)](https://www.ccdc.cam.ac.uk/structures/?ccdc-check=47e7bcf2f218dd3053b06394e346494a)

Results

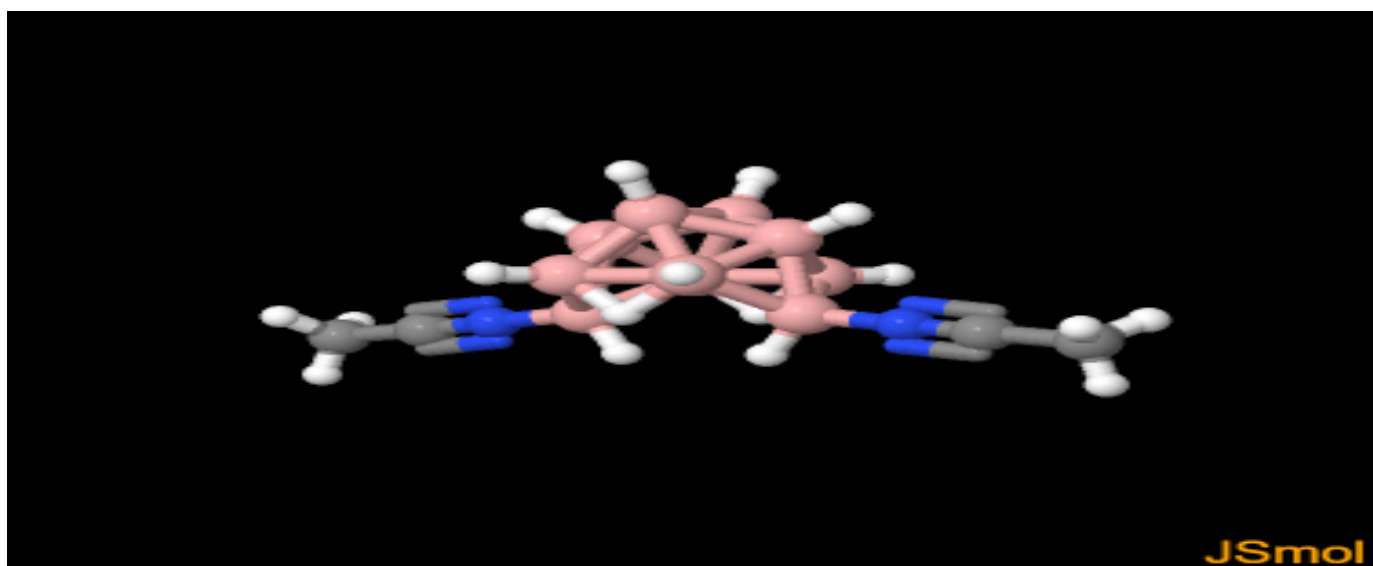
<input checked="" type="checkbox"/> Database Identifier	Deposition Number
<input checked="" type="checkbox"/> MUXPAZ	2023374

[Download ▾](#)

MUXPAZ : New Structure undergoing enhancement ⓘ

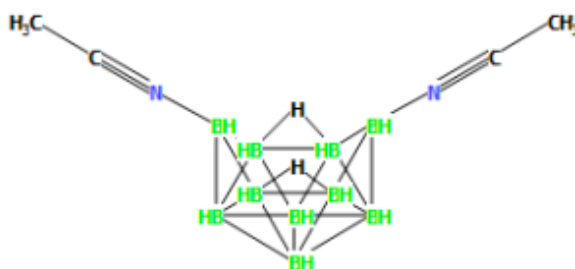
Space Group: C 2/c (15 (<http://it.iucr.org/cgi-bin/gotosgtable.pl?number=15&tabletype=S>)), **Cell:** *a* 15.1728(16)Å
b 11.1299(12)Å *c* 7.7562(9)Å, α 90° β 112.664(3)° γ 90°

3D viewer

[H](#)[Disorder](#)[Menu](#)[Open ▾](#)

Style Labels Packing Measure
Ball and Stick No Labels None None

Chemical diagram




[View group symbols key](#)

Additional details

Deposition Number	2023374
Data Citation	Kedar U. Narvekar, Vishal M. Pawar, Vishnu S. Nadkarni, Bikshandarkoil R. Srinivasan CCDC 2023374: Experimental Crystal Structure Determination, 2020, DOI: 10.5517/ccdc.csd.cc25xh4r (//dx.doi.org/10.5517/ccdc.csd.cc25xh4r)
Deposited on	14/08/2020

Crystallographer(s)

Crystallographer	Bikshandarkoil R Srinivasan  (//orcid.org/0000-0002-6598-6726)
Affiliation	School of Chemical Sciences, Goa University

Associated publications

Kedar U. Narvekar, Vishal M. Pawar, Vishnu S. Nadkarni, Bikshandarkoil R. Srinivasan, *CSD Communication*, 2020

[CCDC Home \(https://www.ccdc.cam.ac.uk/\)](https://www.ccdc.cam.ac.uk/)

[Deposit Structures \(https://www.ccdc.cam.ac.uk/deposit\)](https://www.ccdc.cam.ac.uk/deposit)

[Access Structures \(https://www.ccdc.cam.ac.uk/structures\)](https://www.ccdc.cam.ac.uk/structures)

[About This Service \(https://www.ccdc.cam.ac.uk/access-structures-terms/\)](https://www.ccdc.cam.ac.uk/access-structures-terms/)

[Terms & Conditions \(https://www.ccdc.cam.ac.uk/TermsAndConditions/\)](https://www.ccdc.cam.ac.uk/TermsAndConditions/)