

## CSD Entry: OYITUO

[Sign In \(/structures/login\)](/structures/login)[New Search \(https://www.ccdc.cam.ac.uk/structures/?ccdc-check=249f1e9c9cc40cca7bd4aa411b6ea5a5\)](https://www.ccdc.cam.ac.uk/structures/?ccdc-check=249f1e9c9cc40cca7bd4aa411b6ea5a5)

## Results

<input checked="" type="checkbox"/> Database Identifier	Deposition Number
<input checked="" type="checkbox"/> OYITUO	2035510

[Download ▾](#)

OYITUO : triaqua-(2,2'-bipyridine)-(5-nitrobenzene-1,3-dicarboxylato)-cobalt monohydrate

**Space Group:** P 1 (2 (<http://it.iucr.org/cgi-bin/gotosgtable.pl?number=2&tabletype=S>)), **Cell:** *a* 7.512(5)Å *b* 10.839(8)Å *c* 12.852(8)Å,  $\alpha$  89.82(3)°  $\beta$  87.73(2)°  $\gamma$  74.51(2)°

## 3D viewer



H

Disorder

Menu

Open ▴



Style

Ball and Stick ▾

Labels

No Labels ▾

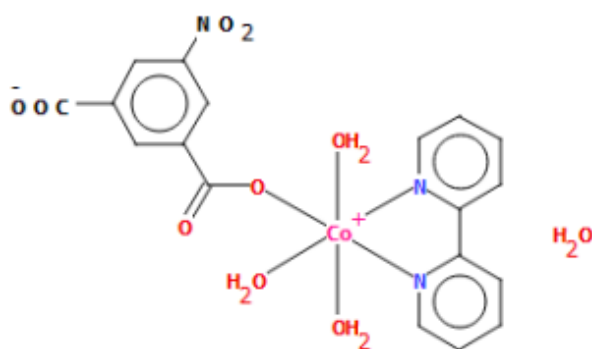
Packing

None ▾

Measure

None ▾

## Chemical diagram



[View group symbols key](#)


## Additional details

**Deposition Number** 2035510

**Data Citation** Sunder N. Dhuri, Luann D'Souza, R J Butcher, SS Harmalkar, Ankita Pal, Nikita Harmalkar, Pratik Asogekar CCDC 2035510: Experimental Crystal Structure Determination, 2021, DOI: 10.5517/ccdc.csd.cc26b3m9 ([//dx.doi.org/10.5517/ccdc.csd.cc26b3m9](https://dx.doi.org/10.5517/ccdc.csd.cc26b3m9))

**Deposited on** 05/10/2020

## Crystallographer(s)

**Crystallographer** Sunder N Dhuri  ([//orcid.org/0000-0003-2732-880X](https://orcid.org/0000-0003-2732-880X))

**Affiliation** Goa University

## Associated publications

Sunder N. Dhuri, Luann D'Souza, R J Butcher, SS Harmalkar, Ankita Pal, Nikita Harmalkar, Pratik Asogekar, *CSD Communication*, 2021

## Additional curated data

More curated data including additional chemical, crystallographic and experimental details are available through WebCSD ([../solutions/csd-core/components/webcsd/](https://www.ccdc.cam.ac.uk/solutions/csd-core/components/webcsd/)). WebCSD also enables you to perform more advanced searching and is available through a license to CSD-Core ([../solutions/csd-core/](https://www.ccdc.cam.ac.uk/solutions/csd-core/)). To find out more about the

benefits of becoming a licenced CSD user click here ([../support-and-resources/support/case/?caseid=5a292a07-f728-e711-82d9-005056868fc8](https://www.ccdc.cam.ac.uk/support-and-resources/support/case/?caseid=5a292a07-f728-e711-82d9-005056868fc8)). If you would like to enquire about obtaining a licence click here (<https://www.ccdc.cam.ac.uk/structures/UnlicensedEnquiry?id=GeneralEnquiry&ccdc-check=6b4d0a3b71664b22a83df7f0dbd25143>). If you have already connected your license with your account then please click Sign In ([../login](https://www.ccdc.cam.ac.uk/login)) to use the WebCSD functionality. If you already have a licence click here (<https://www.ccdc.cam.ac.uk/support-and-resources/support/case/?caseid=5a292a07-f728-e711-82d9-005056868fc8>) to find out how to connect it to Access Structures.

[CCDC Home \(https://www.ccdc.cam.ac.uk/\)](https://www.ccdc.cam.ac.uk/)

[Deposit Structures \(https://www.ccdc.cam.ac.uk/deposit\)](https://www.ccdc.cam.ac.uk/deposit)

[Access Structures \(https://www.ccdc.cam.ac.uk/structures\)](https://www.ccdc.cam.ac.uk/structures)

[About This Service \(https://www.ccdc.cam.ac.uk/access-structures-terms/\)](https://www.ccdc.cam.ac.uk/access-structures-terms/)

[Terms & Conditions \(https://www.ccdc.cam.ac.uk/TermsAndConditions/\)](https://www.ccdc.cam.ac.uk/TermsAndConditions/)