

## CSD Entry: OYECED

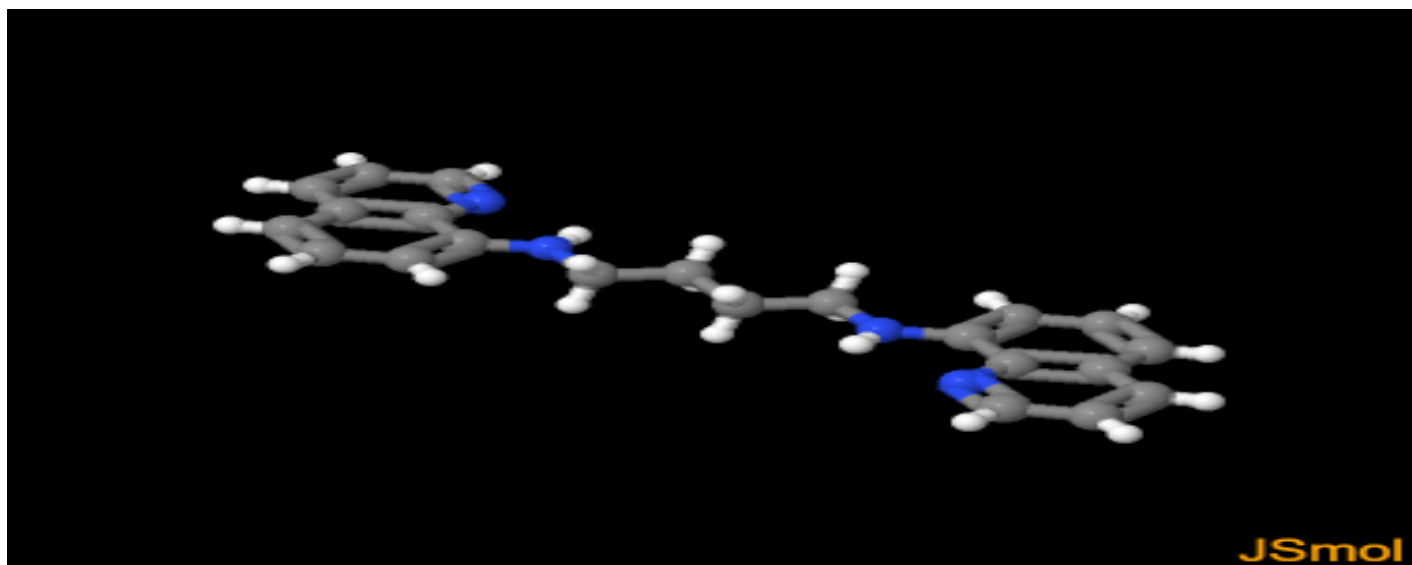
[Sign In \(/structures/login\)](/structures/login)[New Search \(https://www.ccdc.cam.ac.uk/structures/?ccdc-check=249f1e9c9cc40cca7bd4aa411b6ea5a5\)](https://www.ccdc.cam.ac.uk/structures/?ccdc-check=249f1e9c9cc40cca7bd4aa411b6ea5a5)

## Results

<input checked="" type="checkbox"/> Database Identifier	Deposition Number
<input checked="" type="checkbox"/> OYECED	2004723

[Download ▾](#)OYECED : N<sup>1</sup>,N<sup>4</sup>-bis(quinolin-8-yl)butane-1,4-diamine**Space Group:** P 2<sub>1</sub>/c (14 (<http://it.iucr.org/cgi-bin/gotosgtable.pl?number=14&tabletype=S>)), **Cell:** a 5.06350(10)Å b 12.7843(4)Å c 14.0966(4)Å, α 90° β 100.0140(10)° γ 90°

## 3D viewer



H

Disorder

Menu

Open ▲



Style

Ball and Stick ▾

Labels

No Labels ▾

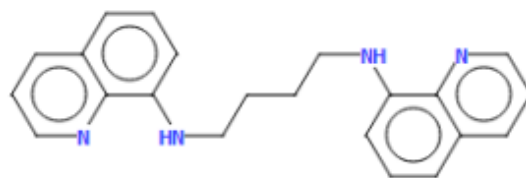
Packing


None ▾

Measure

None ▾

## Chemical diagram



 View group symbols key

## Additional details

<b>Deposition Number</b>	2004723
<b>Data Citation</b>	Sarvesh S. Harmalkar, Ankita V. Naik, Madhuri K. Nilajakar, Sunder N. Dhuri CCDC 2004723: Experimental Crystal Structure Determination, 2021, DOI: 10.5517/ccdc.csd.cc2592h2 ( <a href="http://dx.doi.org/10.5517/ccdc.csd.cc2592h2">//dx.doi.org/10.5517/ccdc.csd.cc2592h2</a> )
<b>Deposited on</b>	07/07/2020

## Crystallographer(s)

<b>Crystallographer</b>	Sunder N. Dhuri and Sarvesh S. Harmalkar  ( <a href="http://orcid.org/0000-0003-2732-880X">//orcid.org/0000-0003-2732-880X</a> )
<b>Affiliation</b>	Goa University

## Associated publications



Sarvesh S. Harmalkar, Ankita V. Naik, Madhuri K. Nilajakar, Sunder N. Dhuri, *Chemistry Select*, 2020, 5, 8447, DOI: 10.1002/slct.202002244 (<http://dx.doi.org/10.1002/slct.202002244>) (<http://dx.doi.org/10.1002/slct.202002244>)

## Additional curated data

More curated data including additional chemical, crystallographic and experimental details are available through WebCSD ([../solutions/csd-core/components/webcsd/](http://www.webcsd.com)). WebCSD also enables you to perform more advanced searching and is available through a license to CSD-Core ([../solutions/csd-core/](http://www.webcsd.com)). To find out more about the

benefits of becoming a licenced CSD user click here ([../support-and-resources/support/case/?caseid=5a292a07-f728-e711-82d9-005056868fc8](https://www.ccdc.cam.ac.uk/support-and-resources/support/case/?caseid=5a292a07-f728-e711-82d9-005056868fc8)). If you would like to enquire about obtaining a licence click here (<https://www.ccdc.cam.ac.uk/structures/UnlicensedEnquiry?id=GeneralEnquiry&ccdc-check=6b4d0a3b71664b22a83df7f0dbd25143>). If you have already connected your license with your account then please click Sign In ([../login](https://www.ccdc.cam.ac.uk/login)) to use the WebCSD functionality. If you already have a licence click here (<https://www.ccdc.cam.ac.uk/support-and-resources/support/case/?caseid=5a292a07-f728-e711-82d9-005056868fc8>) to find out how to connect it to Access Structures.

[CCDC Home \(https://www.ccdc.cam.ac.uk/\)](https://www.ccdc.cam.ac.uk/)

[Deposit Structures \(https://www.ccdc.cam.ac.uk/deposit\)](https://www.ccdc.cam.ac.uk/deposit)

[Access Structures \(https://www.ccdc.cam.ac.uk/structures\)](https://www.ccdc.cam.ac.uk/structures)

[About This Service \(https://www.ccdc.cam.ac.uk/access-structures-terms/\)](https://www.ccdc.cam.ac.uk/access-structures-terms/)

[Terms & Conditions \(https://www.ccdc.cam.ac.uk/TermsAndConditions/\)](https://www.ccdc.cam.ac.uk/TermsAndConditions/)