

CSD Entry: OYECAZ

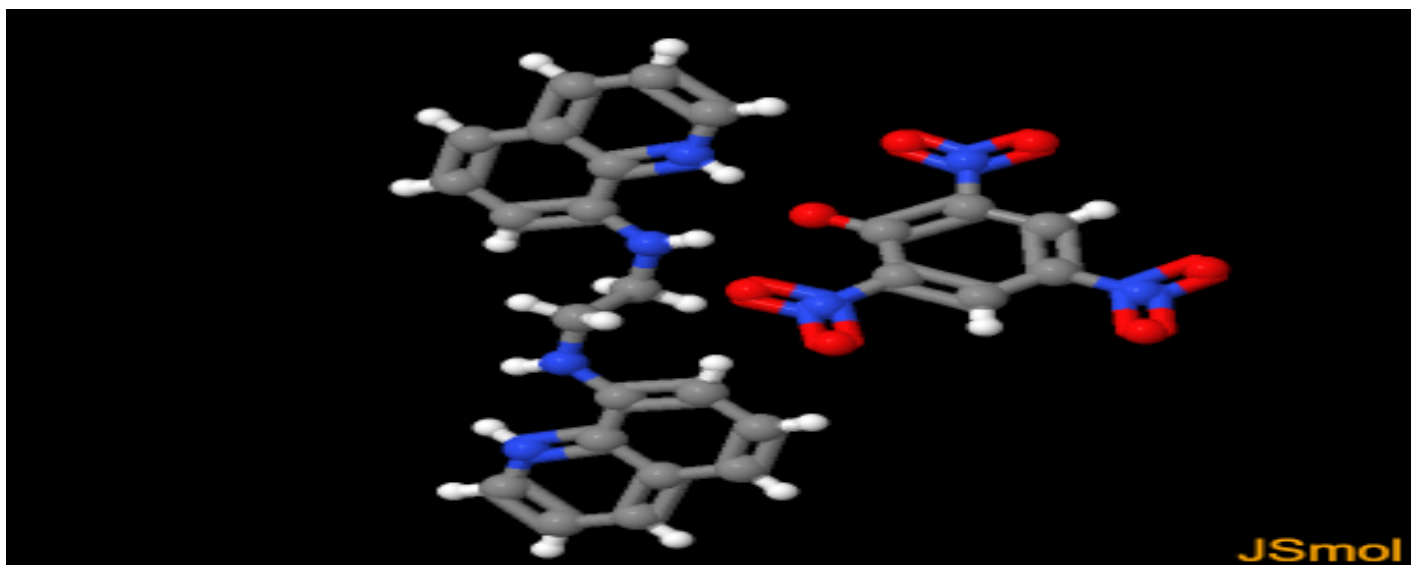
[Sign In \(/structures/login\)](/structures/login)[New Search \(https://www.ccdc.cam.ac.uk/structures/?ccdc-check=249f1e9c9cc40cca7bd4aa411b6ea5a5\)](https://www.ccdc.cam.ac.uk/structures/?ccdc-check=249f1e9c9cc40cca7bd4aa411b6ea5a5)

Results

<input checked="" type="checkbox"/> Database Identifier	Deposition Number
<input checked="" type="checkbox"/> OYECAZ	2004722

[Download ▾](#)OYECAZ : N¹,N²-bis(quinolinium-8-yl)ethane-1,2-diamine dipicrate**Space Group:** P 1̄ (2 (<http://it.iucr.org/cgi-bin/gotosgtable.pl?number=2&tabletype=S>)), **Cell:** *a* 7.140(2)Å *b* 9.219(3)Å *c* 12.893(4)Å, α 87.629(9)° β 87.078(10)° γ 72.469(9)°

3D viewer



H

Disorder

Menu

Open ▴



Style

Ball and Stick ▾

Labels

No Labels ▾

Packing

None ▾


Measure

None ▾

Chemical diagram



2d Diagram of Structure

 View group symbols key

Additional details

Deposition Number	2004722
Data Citation	Sarvesh S. Harmalkar, Ankita V. Naik, Madhuri K. Nilajakar, Sunder N. Dhuri CCDC 2004722: Experimental Crystal Structure Determination, 2021, DOI: 10.5517/ccdc.csd.cc2592g1 (//dx.doi.org/10.5517/ccdc.csd.cc2592g1)
Deposited on	07/07/2020

Crystallographer(s)

Crystallographer	Sunder N. Dhuri and Sarvesh S. Harmalkar  (//orcid.org/0000-0003-2732-880X)
Affiliation	Goa University

Associated publications



Sarvesh S. Harmalkar, Ankita V. Naik, Madhuri K. Nilajakar, Sunder N. Dhuri, *Chemistry Select*, 2020, 5, 8447, DOI: 10.1002/slct.202002244 (<http://dx.doi.org/10.1002/slct.202002244>) (<http://dx.doi.org/10.1002/slct.202002244>)

Additional curated data

More curated data including additional chemical, crystallographic and experimental details are available through WebCSD ([../solutions/csd-core/components/webcsd/](http://www.webcsd.com)). WebCSD also enables you to perform more advanced searching and is available through a license to CSD-Core ([../solutions/csd-core/](http://www.webcsd.com)). To find out more about the

benefits of becoming a licenced CSD user click here ([../support-and-resources/support/case/?caseid=5a292a07-f728-e711-82d9-005056868fc8](https://www.ccdc.cam.ac.uk/support-and-resources/support/case/?caseid=5a292a07-f728-e711-82d9-005056868fc8)). If you would like to enquire about obtaining a licence click here (<https://www.ccdc.cam.ac.uk/structures/UnlicensedEnquiry?id=GeneralEnquiry&ccdc-check=6b4d0a3b71664b22a83df7f0dbd25143>). If you have already connected your license with your account then please click Sign In ([../login](https://www.ccdc.cam.ac.uk/login)) to use the WebCSD functionality. If you already have a licence click here (<https://www.ccdc.cam.ac.uk/support-and-resources/support/case/?caseid=5a292a07-f728-e711-82d9-005056868fc8>) to find out how to connect it to Access Structures.

[CCDC Home \(https://www.ccdc.cam.ac.uk/\)](https://www.ccdc.cam.ac.uk/)

[Deposit Structures \(https://www.ccdc.cam.ac.uk/deposit\)](https://www.ccdc.cam.ac.uk/deposit)

[Access Structures \(https://www.ccdc.cam.ac.uk/structures\)](https://www.ccdc.cam.ac.uk/structures)

[About This Service \(https://www.ccdc.cam.ac.uk/access-structures-terms/\)](https://www.ccdc.cam.ac.uk/access-structures-terms/)

[Terms & Conditions \(https://www.ccdc.cam.ac.uk/TermsAndConditions/\)](https://www.ccdc.cam.ac.uk/TermsAndConditions/)