

CSD Entry: OYEBUS

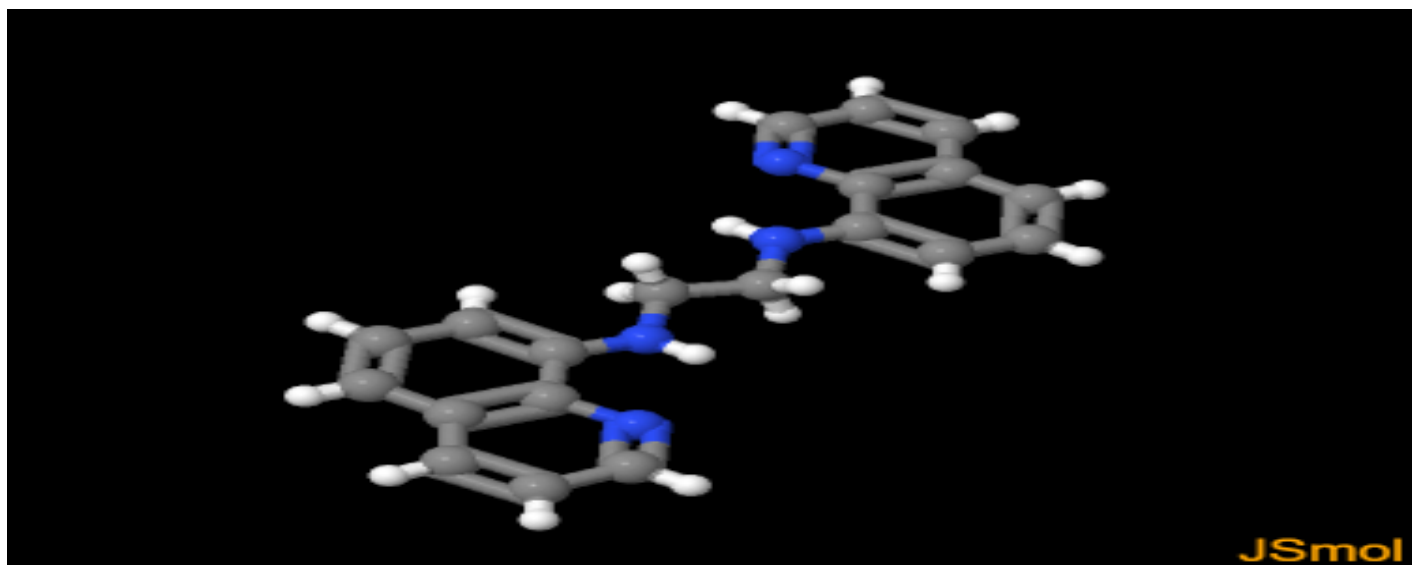
[Sign In \(/structures/login\)](/structures/login)[New Search \(https://www.ccdc.cam.ac.uk/structures/?ccdc-check=249f1e9c9cc40cca7bd4aa411b6ea5a5\)](https://www.ccdc.cam.ac.uk/structures/?ccdc-check=249f1e9c9cc40cca7bd4aa411b6ea5a5)

Results

<input checked="" type="checkbox"/> Database Identifier	Deposition Number
<input checked="" type="checkbox"/> OYEBUS	2004721

[Download ▾](#)OYEBUS : N¹,N²-bis(quinolin-8-yl)ethane-1,2-diamine**Space Group:** P 2₁/n (14 (<http://it.iucr.org/cgi-bin/gotosgtable.pl?number=14&tabletype=S>)), **Cell:** *a* 9.719(2)Å *b* 7.9093(14)Å *c* 10.467(3)Å, α 90° β 98.483(7)° γ 90°

3D viewer

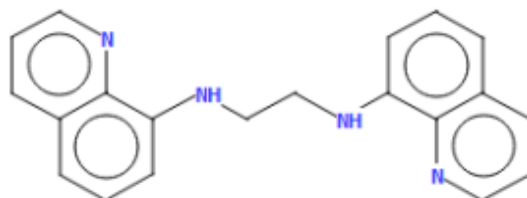



[H](#) [Disorder](#) [Menu](#) [Open ▲](#) [↗](#)

Style **Labels** **Packing** **Measure**

Ball and Stick ▾ No Labels ▾ None ▾ None ▾

Chemical diagram



 View group symbols key

Additional details

Deposition Number	2004721
Data Citation	Sarvesh S. Harmalkar, Ankita V. Naik, Madhuri K. Nilajakar, Sunder N. Dhuri CCDC 2004721: Experimental Crystal Structure Determination, 2021, DOI: 10.5517/ccdc.csd.cc2592f0 (//dx.doi.org/10.5517/ccdc.csd.cc2592f0)
Deposited on	07/07/2020

Crystallographer(s)

Crystallographer	Sunder N. Dhuri and Sarvesh S. Harmalkar  (//orcid.org/0000-0003-2732-880X)
Affiliation	Goa University

Associated publications



Sarvesh S. Harmalkar, Ankita V. Naik, Madhuri K. Nilajakar, Sunder N. Dhuri, *Chemistry Select*, 2020, 5, 8447, DOI: 10.1002/slct.202002244 (<http://dx.doi.org/10.1002/slct.202002244>) (<http://dx.doi.org/10.1002/slct.202002244>)

Additional curated data

More curated data including additional chemical, crystallographic and experimental details are available through WebCSD ([../solutions/csd-core/components/webcsd/](http://www.webcsd.com)). WebCSD also enables you to perform more advanced searching and is available through a license to CSD-Core ([../solutions/csd-core/](http://www.webcsd.com)). To find out more about the

benefits of becoming a licenced CSD user click here ([../support-and-resources/support/case/?caseid=5a292a07-f728-e711-82d9-005056868fc8](https://www.ccdc.cam.ac.uk/support-and-resources/support/case/?caseid=5a292a07-f728-e711-82d9-005056868fc8)). If you would like to enquire about obtaining a licence click here (<https://www.ccdc.cam.ac.uk/structures/UnlicensedEnquiry?id=GeneralEnquiry&ccdc-check=6b4d0a3b71664b22a83df7f0dbd25143>). If you have already connected your license with your account then please click Sign In ([../login](https://www.ccdc.cam.ac.uk/login)) to use the WebCSD functionality. If you already have a licence click here (<https://www.ccdc.cam.ac.uk/support-and-resources/support/case/?caseid=5a292a07-f728-e711-82d9-005056868fc8>) to find out how to connect it to Access Structures.

[CCDC Home \(https://www.ccdc.cam.ac.uk/\)](https://www.ccdc.cam.ac.uk/)

[Deposit Structures \(https://www.ccdc.cam.ac.uk/deposit\)](https://www.ccdc.cam.ac.uk/deposit)

[Access Structures \(https://www.ccdc.cam.ac.uk/structures\)](https://www.ccdc.cam.ac.uk/structures)

[About This Service \(https://www.ccdc.cam.ac.uk/access-structures-terms/\)](https://www.ccdc.cam.ac.uk/access-structures-terms/)

[Terms & Conditions \(https://www.ccdc.cam.ac.uk/TermsAndConditions/\)](https://www.ccdc.cam.ac.uk/TermsAndConditions/)