

CSD Entry: GOSLUY

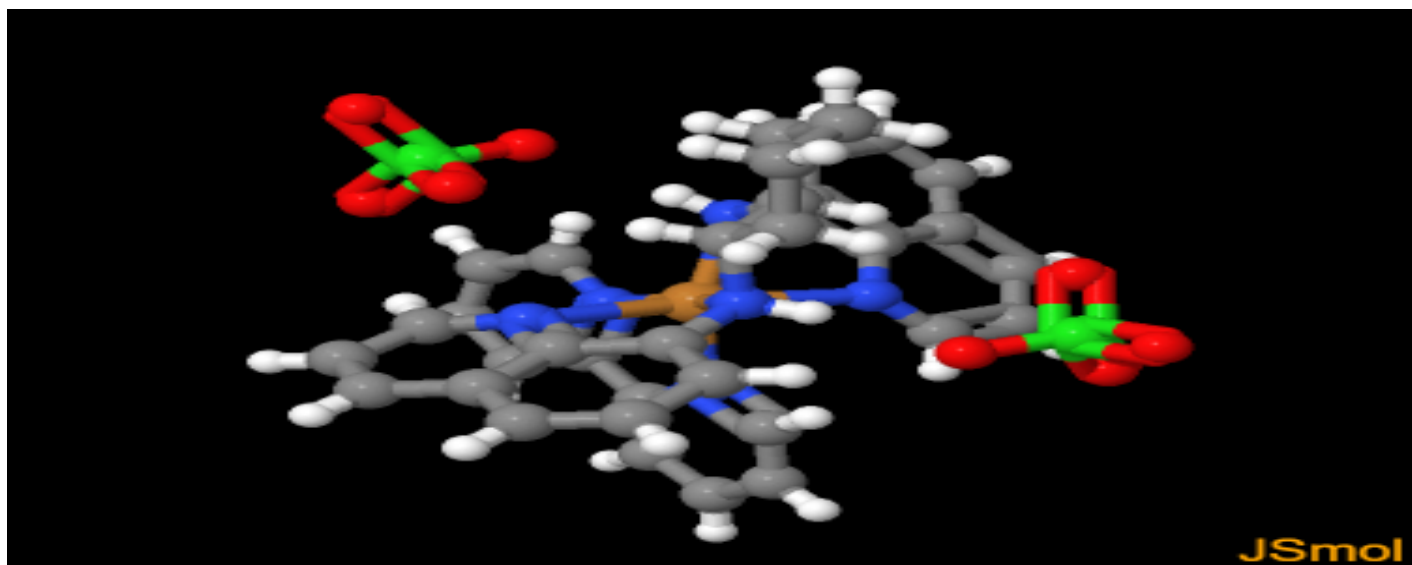
[Sign In \(/structures/login\)](/structures/login)[New Search \(https://www.ccdc.cam.ac.uk/structures/?ccdc-check=47e7bcf2f218dd3053b06394e346494a\)](https://www.ccdc.cam.ac.uk/structures/?ccdc-check=47e7bcf2f218dd3053b06394e346494a)

Results

<input checked="" type="checkbox"/> Database Identifier	Deposition Number
<input checked="" type="checkbox"/> GOSLUY	1910757

[Download ▾](#)GOSLUY : (2,2'-bipyridine)-[N¹,N²-bis(quinolin-8-yl)cyclohexane-1,2-diamine]-copper(ii) diperchlorate**Space Group:** P 2₁/n (14 (<http://it.iucr.org/cgi-bin/gotosgtable.pl?number=14&tabletype=S>)), **Cell:** a 12.049(2)Å b 16.769(3)Å c 16.972(3)Å, α 90° β 107.538(3)° γ 90°

3D viewer



H

Disorder

Menu

Open ▴



Style

Ball and Stick ▾

Labels

No Labels ▾

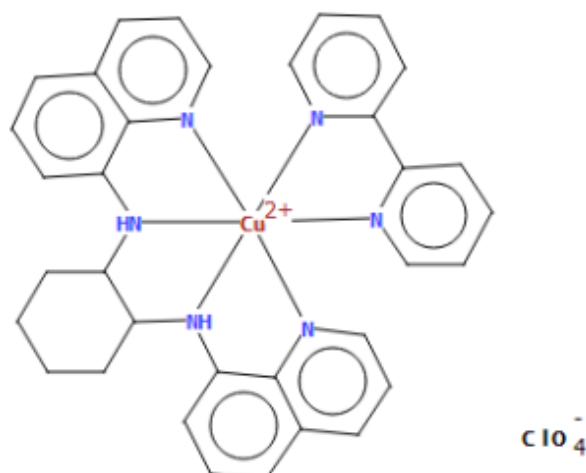
Packing

None ▾

Measure

None ▾

Chemical diagram



[View group symbols key](#)


Additional details

Deposition Number	1910757
Data Citation	Sarvesh S. Harmalkar, Raymond J. Butcher, Vivekanand V. Gobre, Sanket K. Gaonkar, Luann R. D'Souza, Muniyandi Sankaralingam, Irene Furtado, Sunder N. Dhuri CCDC 1910757: Experimental Crystal Structure Determination, 2019, DOI: 10.5517/ccdc.csd.cc2249bw (//dx.doi.org/10.5517/ccdc.csd.cc2249bw)
Deposited on	17/04/2019

Crystallographer(s)

Crystallographer	R. J. Butcher
Affiliation	Howard University, Washington

Associated publications

 http://dx.doi.org/10.1016/j.ica.2019.119020	<p>Sarvesh S. Harmalkar, Raymond J. Butcher, Vivekanand V. Gobre, Sanket K. Gaonkar, Luann R. D'Souza, Muniyandi Sankaralingam, Irene Furtado, Sunder N. Dhuri, <i>Inorganica Chimica Acta</i>, 2019, 498, 119020, DOI: 10.1016/j.ica.2019.119020 (http://dx.doi.org/10.1016/j.ica.2019.119020)</p>
---	---

Additional curated data

More curated data including additional chemical, crystallographic and experimental details are available through WebCSD ([../solutions/csd-core/components/webcsd/](https://www.ccdc.cam.ac.uk/solutions/csd-core/components/webcsd/)). WebCSD also enables you to perform more advanced searching and is available through a license to CSD-Core ([../solutions/csd-core/](https://www.ccdc.cam.ac.uk/solutions/csd-core/)). To find out more about the benefits of becoming a licenced CSD user click here ([../support-and-resources/support/case/?caseid=5a292a07-f728-e711-82d9-005056868fc8](https://www.ccdc.cam.ac.uk/support-and-resources/support/case/?caseid=5a292a07-f728-e711-82d9-005056868fc8)). If you would like to enquire about obtaining a licence click here (<https://www.ccdc.cam.ac.uk/structures/UnlicensedEnquiry?id=GeneralEnquiry&ccdc-check=fe270ca1d17eb37ff11dc39099a8614b>). If you have already connected your license with your account then please click Sign In ([../login](https://www.ccdc.cam.ac.uk/login)) to use the WebCSD functionality. If you already have a licence click here (<https://www.ccdc.cam.ac.uk/support-and-resources/support/case/?caseid=5a292a07-f728-e711-82d9-005056868fc8>) to find out how to connect it to Access Structures.

[CCDC Home \(https://www.ccdc.cam.ac.uk/\)](https://www.ccdc.cam.ac.uk/)

[Deposit Structures \(https://www.ccdc.cam.ac.uk/deposit\)](https://www.ccdc.cam.ac.uk/deposit)

[Access Structures \(https://www.ccdc.cam.ac.uk/structures\)](https://www.ccdc.cam.ac.uk/structures)

[About This Service \(https://www.ccdc.cam.ac.uk/access-structures-terms/\)](https://www.ccdc.cam.ac.uk/access-structures-terms/)

[Terms & Conditions \(https://www.ccdc.cam.ac.uk/TermsAndConditions/\)](https://www.ccdc.cam.ac.uk/TermsAndConditions/)