

## CSD Entry: QULYEE

[Sign In \(/structures/login\)](/structures/login)[New Search \(https://www.ccdc.cam.ac.uk/structures/?ccdc-check=249f1e9c9cc40cca7bd4aa411b6ea5a5\)](https://www.ccdc.cam.ac.uk/structures/?ccdc-check=249f1e9c9cc40cca7bd4aa411b6ea5a5)

## Results

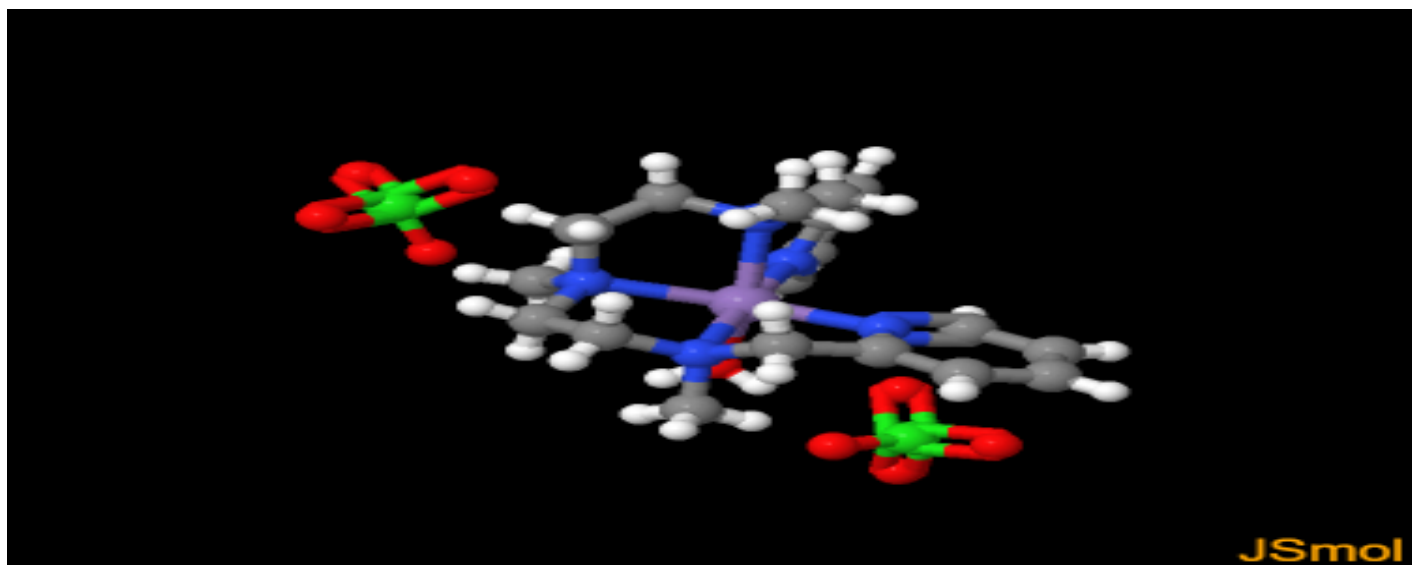
<input checked="" type="checkbox"/> Database Identifier	Deposition Number
<input checked="" type="checkbox"/> QULYEE	1532120

[Download ▾](#)

QULYEE : aqua-{N,N',N''-trimethyl-N,N''-bis(2-pyridylmethyl)diethylenetriamine}-manganese diperchlorate

**Space Group:** P 2<sub>1</sub>/c (14 (<http://it.iucr.org/cgi-bin/gotosgtable.pl?number=14&tabletype=S>)), **Cell:** a 8.983(3)Å b 33.268(11)Å c 8.791(3)Å, α 90° β 105.287(4)° γ 90°

## 3D viewer



H

Disorder

Menu

Open ▴



Style

Ball and Stick ▾

Labels

No Labels ▾

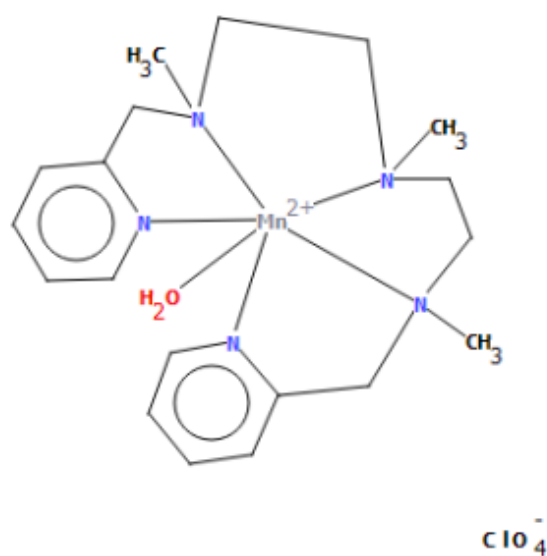
Packing


None ▾

Measure

None ▾

## Chemical diagram



 View group symbols key

## Additional details

<b>Deposition Number</b>	1532120
<b>Data Citation</b>	Dattaprasad D. Narulkar, Koteswar Devulapally, Anil Kumar U., Sunder N. Dhuri, Vishal M. Dhavale, Anil Kumar Vardhaman, Lingamallu Giribabu CCDC 1532120: Experimental Crystal Structure Determination, 2020, DOI: 10.5517/ccdc.csd.cc1nf97m ( <a href="http://dx.doi.org/10.5517/ccdc.csd.cc1nf97m">//dx.doi.org/10.5517/ccdc.csd.cc1nf97m</a> )
<b>Deposited on</b>	10/02/2017

## Associated publications



(<http://dx.doi.org/10.1039/D0SE00232A>)

Dattaprasad D. Narulkar, Koteswar Devulapally, Anil Kumar U., Sunder N. Dhuri, Vishal M. Dhavale, Anil Kumar Vardhaman, Lingamallu Giribabu, *Sustainable Energy & Fuels*, 2020, 4, 2656, DOI: 10.1039/D0SE00232A (<http://dx.doi.org/10.1039/D0SE00232A>)

## Additional curated data

More curated data including additional chemical, crystallographic and experimental details are available through WebCSD (<http://www.rsc.org/solutions/csd-core/components/webcsd/>). WebCSD also enables you to perform more advanced searching and is available through a license to CSD-Core (<http://www.rsc.org/solutions/csd-core/>). To find out more about the benefits of becoming a licenced CSD user click here (<http://www.rsc.org/support-and-resources/support/case/?caseid=5a292a07-f728-e711-82d9-005056868fc8>). If you would like to enquire about obtaining a licence click here (<https://www.ccdc.cam.ac.uk/structures/UnlicensedEnquiry?id=GeneralEnquiry&ccdc-check=6b4d0a3b71664b22a83df7f0dbd25143>). If you have already connected your license with your account then

please click Sign In (../login) to use the WebCSD functionality. If you already have a licence click here (<https://www.ccdc.cam.ac.uk/support-and-resources/support/case/?caseid=5a292a07-f728-e711-82d9-005056868fc8>) to find out how to connect it to Access Structures.

[CCDC Home \(https://www.ccdc.cam.ac.uk/\)](https://www.ccdc.cam.ac.uk/)

[Deposit Structures \(https://www.ccdc.cam.ac.uk/deposit\)](https://www.ccdc.cam.ac.uk/deposit)

[Access Structures \(https://www.ccdc.cam.ac.uk/structures\)](https://www.ccdc.cam.ac.uk/structures)

[About This Service \(https://www.ccdc.cam.ac.uk/access-structures-terms/\)](https://www.ccdc.cam.ac.uk/access-structures-terms/)

[Terms & Conditions \(https://www.ccdc.cam.ac.uk/TermsAndConditions/\)](https://www.ccdc.cam.ac.uk/TermsAndConditions/)