

DECEMBER 2021

UNCTAD Research Paper No. 80 UNCTAD/SER.RP/2021/23

**Pranab
Mukhopadhyay**

Professor of Economics
Goa Business School,
Goa University
India
pm@unigoa.ac.in

Climate Adaptation: Building resilience through structural transformation

Abstract

Combining longitudinal conventional macroeconomic data with various climate-related variables, we examine macro-dynamics of income, employment, and distribution within the climate change framework by using the Global Policy Model of the United Nations. By focusing on a group of thirty countries, this paper uses a transition analysis method between 1978 and 2018 to understand the trajectory of different countries based on their geographical location, level of economic development, demographic and climate characteristics. Results suggest that adaptation strategies should avoid re-enforcing pre-existing unequal social and economic hierarchies, especially in the context of race and gender. Unless marginalized populations are made partners and locally relevant in the adaptation strategies, there is a risk of adverse outcomes. A positive intervention by the governments as proposed in the SDGs would help in addressing the racial and gender inequalities that have been historical institutionalized. Ensuring domestic social safety nets, guaranteeing employment and building green infrastructure would help them transform structurally to sustainable paths. Unfortunately, development expenditures are the first items that get reduced in fiscal restructuring. New investments must be planned in a manner that ensures a non-declining intertemporal trajectory of comprehensive wealth. International cooperation is critical not only for economic development but also for ecosystem and biodiversity conservation.

Key words: Spatial development challenges, Green structural transformation, climate change, adaptation



UNITED NATIONS

The findings, interpretations, and conclusions expressed herein are those of the author(s) and do not necessarily reflect the views of the United Nations or its officials Member States. The designations employed and the presentation of material on any map in this work do not imply the expression of any opinion whatsoever on the part of the United Nations concerning the legal status of any country, territory, city, or area or of its authorities, or concerning the delimitation of its frontiers and boundaries.

This paper represents the personal views of the author(s) only, not the views of the UNCTAD secretariat or member States. The author(s) accept sole responsibility for any errors. Any citation should refer to the author(s) and not the publisher. This paper has not been formally edited.

Contents

Acknowledgements.....	2
1. Climate Change and Adaptation: The challenges.....	3
1.1 The Paris Agreement and NDCs.....	3
1.2 SDGs and NDCs.....	3
1.3 Market failures and fiscal policy.....	4
1.4 SIDS and climate change.....	5
1.5 Gender impacts.....	5
2. Scope and Methods.....	6
2.1 Data.....	6
2.2 Scope of the study.....	6
2.3 Transition dynamics method.....	6
3. Development challenges and Geography.....	7
3.1 Spatial Vulnerability.....	7
3.2 Agriculture and Food Security.....	9
3.3 Rural Challenge.....	10
3.4 Migration as an Adaptation strategy.....	11
3.5 The Challenge of urbanisation.....	12
3.5.1 Air pollution.....	14
3.5.2 Water supply and Drainage.....	15
4. Linking economic development and climate change adaptation.....	15
4.1. Role of fiscal policy.....	16
4.2 Structural change as a pathway to climate adaptation.....	20
5. Discussion.....	23
References.....	25

Acknowledgements

I would like to thank UNCTAD for a grant to work on this paper. I am particularly grateful to Francis Cripps and Alex Izurieta for many helpful discussions and for sharing the data from the United Nations Global Policy Model (GPM). I am grateful to Pravinya Bhangle for research assistance.

1. Climate Change and Adaptation: The challenges

Climate change will add in a significant way to the existing developmental challenges that most lower-middle-income and poor countries have faced (IPCC, 2014a). Macroeconomic simulations suggest that damages caused by climate change would have a downward impact on aggregate demand (through reduced profitability, investment) and employment (Rezai et al., 2018). If anthropogenic pressures continue to increase, there could be catastrophic impacts on human wellbeing if we cross certain “tipping points” (Westley et al., 2011).

While there is a near-global consensus that there is a need for climate change action, there have been protracted international debates on achieving cooperation. While climate economics was devoted mainly to mitigation in the earlier years (Nordhaus, 1977), it has since engaged with other issues, including adaptation (Vale, 2016). The earth’s systems already have to deal with the early effects of climate change. It is quite evident that mitigation efforts may not be adequate in the short run.

1.1 The Paris Agreement and NDCs

The most recent Paris Accord of 2015 was adopted by 196 Parties (<https://unfccc.int/process-and-meetings/the-paris-agreement/the-paris-agreement>). The main objective of the Paris Accord was to achieve a (1) ceiling of 2 degrees centigrade compared to pre-industrial levels and (2) “climate neutral” status by 2050. While setting the global target, this Accord left it to individual nations to decide on their own feasible targets and strategies through Intended Nationally Determined Commitments based on the principle of “common but differentiated responsibilities and respective capabilities.” On finalisation of the national commitments, these were submitted to the UNFCCC as the Nationally Determined Commitments (NDCs) to be reviewed every five years starting in 2023. At the time of writing this paper, 190 parties had already submitted their first NDCs, and eight parties had submitted their second NDCs (<https://www4.unfccc.int/sites/ndcstaging/Pages/Home.aspx>). Achieving the NDC targets poses multiple challenges and involves lifestyle changes at the household level and production transitions to low carbon methods for industries, among others (Vrontisi et al., 2020).

Since there are no accountability mechanisms in the Paris Accord, one way to trigger NDC commitment compliance by developing countries is for developed countries to signal in their NDCs the extent of funding they will make available for climate finance (Pauw et al., 2019). However, there remains a gap between the projected need and the committed funds (Buchner et al., 2019). Apart from the NDCs, member countries of the UN are also committed to achieving the Sustainable Development Goals (SDGs), many of which deal with reducing vulnerability apart from Goal 13 on climate action (UN, 2015).

1.2 SDGs and NDCs

The fulfillment of NDC commitments and SDG targets by less developed countries (LDCs) and Small Island Developing States (SIDS) is particularly challenging. It may be contingent on receiving international cooperation by way of finance, technology transfer, and capacity building (Pauw et al., 2020). Such cooperation would help developing countries plan their strategies to overcome climate vulnerabilities more effectively. The term vulnerability in this paper is broadly defined as the proneness of a natural or social system to be displaced to an inferior position (including welfare, health, income) by an event or a process (sequence of events). Such displacements may occur due to climate or non-climate-related processes. Climate change may compound existing vulnerabilities and therefore leading to cascading effects, remedied to which would not lie in the domain of climate solutions alone.

Researchers have identified regions (Watson et al., 1998) that will be most adversely affected by climate change – labelled as “hot spots” (Schleussner et al., 2018). Two approaches have been adopted to identify these locations – (a) which region is most vulnerable (Malone and Engle, 2011) and (b) which region will see the most change in climate variables (Giorgi, 2006). While the latter is important from the point of view of spatial climate assessments, the former will be of greater concern to those studying impacts on human well-being due to climate change.

One of the direct consequences of climate change has been the increased frequency of extreme events and increased intensity of extreme weather events (Frame et al., 2020). A recent review comparing disaster events over four decades (UNDRR and CRED, 2020) found that the last two decades have seen a near doubling of disasters and the economic costs of disasters compared to the earlier two decades. The impact on livelihoods due to extreme events is particularly worrisome. Notably, the report points out that floods (44 percent, and associated with it, landslides, 5 percent) and storms (28 percent) are the two most frequently reported climate disasters globally. These are followed by heatwaves (6percent), droughts (5 percent), and wildfires (3 percent). Floods affected the largest number of people (41 percent), followed by droughts (35 percent) and storms accounted for the largest number of deaths due to climate-related events. The top ten countries that reported disasters in the last two decades are (China, the United States, India, the Philippines, Indonesia, Japan, Viet Nam, Mexico, Bangladesh and Afghanistan, in decreasing order). While China’s major problem was floods, for India, it was drought. This suggests that climate-related events have varied impacts depending on what we are focusing on -- the type of event, the number of deaths, people affected, among others.

We examine the growth and development challenges of countries ranging from low to high-income countries in the context of climate change. Many of these countries have sections of the population that are already vulnerable due to poverty and lack of social security, uncertain employment, which continue to be development challenges. Their vulnerability would be particularly exacerbated by climate change. The rural economy becomes risk-prone with agricultural unsustainability, and urban areas fail to provide employment and social safety nets to migrant workers. The poor in developing countries face the risk of receding government involvement from the economic and social sphere, thereby accelerating inequality. Such economic and political trajectories would further reduce the possibility of the economy's autonomous structural transformation without endangering the profit-wage shares.

These three factors (climate change, urbanisation, and migration), in addition to technology, have been seen as the most significant factors impacting inequality (UNDESA, 2020). Inequality between countries has reduced over time but has steadily increased within countries and among income deciles. This has social and economic implications which have a direct bearing on sustainability. This could imply increasing vulnerability of groups that are getting economically, socially, and politically marginalised, a process exacerbated by climate change (Olsson, 1993).

1.3 Market failures and fiscal policy

Environmental management failures are typically attributed to the failure of either the market or the government (Hepburn, 2010). However, governments are answerable to their citizens, and most countries have internal mechanisms for course correction when governments deviate significantly from national priorities. Markets on their own are rarely known to have the ability to correct failures in allocation, especially when it deals with equity. Therefore, market failure is a serious problem associated with environmental management and achieving environmental sustainability (Rosenbloom et al., 2020). This creates the need for state intervention, both in environmental management and addressing vulnerability, especially for marginalised groups (Rosewarne, 2010). One of the direct ways to achieve this, especially in developing countries, would be to ensure guaranteed employment, food security and access to affordable public health by the state (Osberghaus et al., 2010). This would help build resilience against loss of livelihood, especially during disasters that are likely to increase in frequency with climate change.

An employment guarantee policy would have multiplier effects on the economy resulting in robust demand-driven growth (Patnaik, 2005). Climate proofing of the economy would require a structural transformation with investments in green sectors. It would need switching to non-fossil fuel production and low-emission industrial strategies on the one hand (Gallagher and Kozul-Wright, 2019) to expanded irrigation networks and guaranteed minimum income for farmers on the other. This may be a pathway for balanced growth and reduced inequality and rural indebtedness. All of this would require a planned development strategy that would use the climate change challenge as an opportunity to meet the economic and social needs of low-income countries. Typically, with growing international trade in goods and services and liberal, volatile international financial flows, the independence of small nation-states to pursue an independent fiscal and monetary policy is fast receding (Izurieta et al., 2018). The pressure of financing climate change adaptation may further reduce this fiscal space for developing countries for other (non-climate) developmental actions.

When developing countries attempt to finance climate change adaptation by borrowing internationally at market rates, their macroeconomy becomes vulnerable. The known macroeconomic threats are exposure to exchange rate shocks and volatile capital flows (Bhaduri, 2009). The borrowing for adaptation would then have to be in addition to financing needs of existing current account deficits. This makes developing economies vulnerable to pressure from international capital to remove capital controls leading to a loss of national autonomy in domestic monetary and fiscal policy (Patnaik, 2011). Under these circumstances, developing country governments would be left with little fiscal independence to pursue their national developmental agenda or pursue adaptation measures optimally. This necessitates the need for international cooperation that would make it possible for developing nations to manoeuvre their fiscal balance to meet their national developmental needs and international climate commitments. It has been pointed out that a rising gap on the current account could have an impact on domestic deficits (Rakshit, 2009). This is in contrast to the proposition that the cause of rising current account deficits may be domestic deficits. Therefore, opening up of trade controls, especially financial controls, can impose trade-offs for national governments and limit their freedom to choose national priorities, and allocate development funds to meet both the NDC targets and the SDG goals.

1.4 SIDS and climate change

The need for such policy cooperation is even more important for the Small Island Developing States (SIDS). The UN has treated such nation-states as a separate group that will face the most significant impact of climate change, including sea-level rise, tropical cyclones, and marine heatwaves (Thomas et al., 2020). The ethical dilemma for the rest of the world remains that these island states, home to about 65 million people, have the lowest ecological footprint contributing to climate change. Nevertheless, they will be the frontline of climate change damages with varying abilities to mitigate or adapt to climate change. This group geographically is spread over three regions the (i) the Caribbean; (ii) the Pacific; and (iii) the Atlantic, Indian Ocean, Mediterranean and South China seas (AIMS) and are considered one of the hot-spots for climate change.

1.5 Gender impacts

Climate change is expected to have a heterogeneous impact with respect to gender. Existing gender gaps in wealth (Deere et al., 2013; Frémeaux and Leturcq, 2020), employment (World Bank, 2014), education (Buchmann et al., 2008), family decisions (Mossman, 1994), health services (Shaw et al., 2017), political representation (Childs and Lovenduski, 2013; Kenworthy and Malami, 1999), and gender violence (Garcia-Moreno and Watts, 2011), among others, are expected to be amplified by climate change due to multi-layered social hierarchies. The need for state intervention to remedy such gaps and international cooperation to build resilience will have an added dimension when discussing gender issues.

The rest of the paper is organised as follows. We describe the scope of the study and the data sources in the next section 2. In section 3, we describe the socio-economic and climate vulnerabilities that different regions face. We discuss these vulnerabilities in the context of geographical location and look at linkages between them. In section 4, we discuss the development and growth challenges that currently exist. We conclude in section 5 with a discussion on some of the potential policy interventions that can address the dual challenges of development needs and climate change adaptation which may seem contradictory in certain situations.

2. Scope and Methods

2.1 Data

In this paper, we use a new version of the database from the Global Policy Model (GPM) of the United Nations (Cripps et al., 2010). This new version combines longitudinal data of conventional macroeconomic variables with various climate variables. It thus permits us to examine macro-dynamics of income, employment, and distribution within the climate change framework.

There are three popular ways in which countries are classified (Nielsen, 2011). The World Bank (WB) classifies countries by per capita income (World Bank, 2020). The International Monetary Fund (IMF) classifies countries by per capita income and trade and financial openness (IMF, 2021). The United Nations (UN) classifies based on income, health, and education (UN, 2020). The WB classifies countries into four groups -- high-income countries, upper middle income, lower middle income and low-income countries. The IMF classifies countries into two groups -- advanced economies and non-advanced economies (emerging market and developing economies). The UN classifies countries into three groups, developed economies, economies in transition and developing economies. The WB offers a little more heterogeneity than the IMF and UN classification and uses a single variable (income) that is easily understood even outside academic and policy domain. Despite the limitation of income as a single indicator of development (UNDP, 2019), for the limited purpose of this paper, we have used this variable to group countries.

2.2 Scope of the study

This paper focuses on a group of thirty countries (for convenience called the G-30 countries) similar to McKinley (2021). The G-30 is a cluster of countries across all continents representing different development status, income levels, and geographic locations (high income -- Australia (AU), Canada (CA), Chile (CL), France (FR), Germany (DE), Italy (IT), Japan (JP), Saudi Arabia (SA), the Republic of Korea (KR), United Kingdom (UK), United States of America (US); upper middle income -- Argentina (AR), Brazil (BR), China (CN), Ireland (IR), Mexico (MX), the Russian Federation (RU), Turkey (TR), South Africa (ZA); lower middle income -- Bangladesh (BD), the Democratic Republic of Congo (CD), Egypt (EG), Indonesia (ID), India (IN), Nigeria (NG), the Philippines (PH), Pakistan (PK), Viet Nam (VN); and low income -- namely Ethiopia (ET) and United Republic of Tanzania (TZ). These countries differ not only in their income but also in their spatial, climatic, demographic, and development status.

2.3 Transition dynamics method

Our study uses a transition analysis method suggested by Quah (1993, 1997), which examines the distribution of countries in multiple phases of their progression. It checks whether a country that started in a particular cohort ends with the same cohort is relatively worse or better off. This analysis uses the Markov process as a distribution dynamic framework to map the transition of economies and is popular in growth convergence studies (Maasoumi et al., 2007). We rely on a graphical representation for the transition analysis through the paper to keep the arguments accessible to a non-technical audience. The two periods that we compare are 1978 and 2018. Although data for many variables are available from 1975, however, we have used 1978 as the

initial year for our analysis to round off a four-decade change analysis given that the most recent actual data available is for 2018. We use the United States per capita income (PCI) of 1978 (\$30646 at \$2015 PPP) as the benchmark for change as it was the highest PCI during that period (apart from Saudi Arabia). We refer to this as the aspirational PCI for all other countries (except Saudi Arabia). Saudi Arabia, whose PCI was already higher than that of the United States in 1978, is an outlier and an oil exporter. We have therefore not used Saudi Arabia for comparative purposes here. All monetary values are normalised for 2015 prices in \$ purchasing power (PPP) terms to allow for comparability (UNDESA, 2010, updated version).

3. Development challenges and Geography

3.1 Spatial Vulnerability

Climate change will have differentiated impacts on different countries -- depending on their geographical location, their per capita income, level of development, demographic characteristics, among other characteristics.

It is well-recognised among economists now that space matters in economic outcomes (Krugman, 1991). Climate science too confirms that geographical location is an essential determinant of the nature and extent of the impact of climate change (Husnain et al., 2018). It would therefore be a natural extension to ask how geographical location impacts economic outcomes in the context of climate change (Arnell et al., 2019).

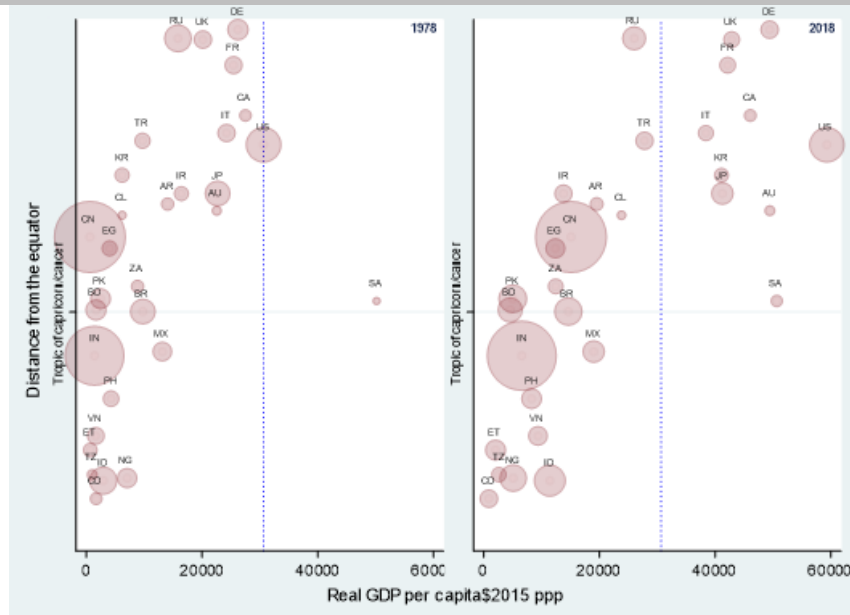
Let us start by placing countries with respect to their distance from the equator with a separation at the Tropic of Cancer and Tropic of Capricorn. It has been pointed out that weather patterns and ecosystems differ between the tropic and temperate zones (Welcomme and Berkowitz, 1991). Since countries lie on either side of the equator, for convenience, we have taken the absolute difference in latitude (so all distances are positive). Further, some countries are spread over many latitudes and may have both tropical and temperate weather in different parts. We have taken the capital as the central location and accordingly determined its location.

We start by plotting a scatter of distance (vertical axis) and PCI (horizontal axis) for the start year (1978) and end year (2018) for comparison (Figure 1). There are two reasons why this mapping has important implications in the context of climate change. First, temperatures in the tropics are expected to rise slower than in the polar zones (IPCC, 2014a). However, the adverse impact on human populations will be much greater in tropical regions due to complex climate dynamics and exposure of populations.

This implies that heatwaves and droughts will become more prevalent in the tropics. Consequently, it will have direct adverse impacts on the population residing in the tropics and increase their vulnerability and adaptation costs. For urban populations, climate-induced mortality and morbidity are attributed to heat waves and heat islands (Campbell et al., 2018; Wong et al., 2013).

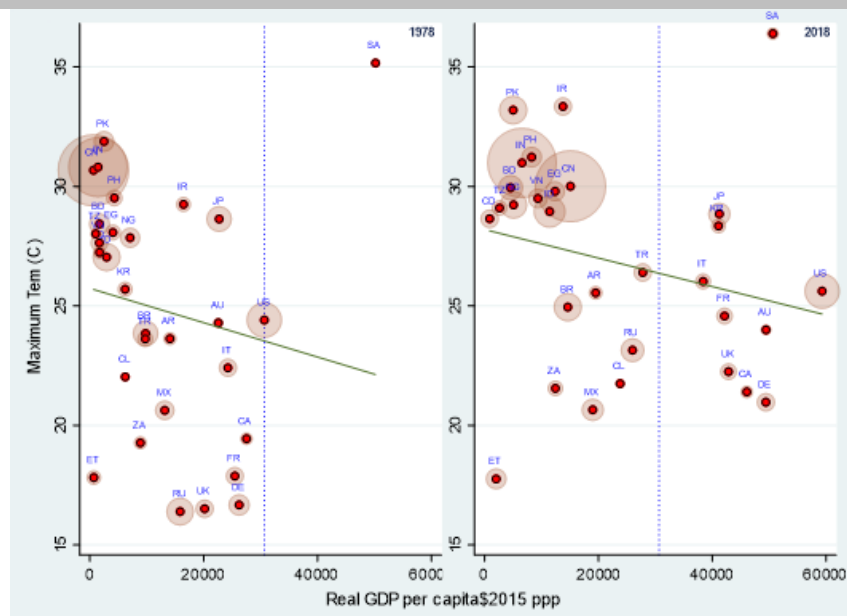
Over these forty years, there has been considerable growth in PCI for most countries under consideration. By 2018, many countries have achieved and overtaken the aspirational PCI. Interestingly, none of these countries belong to the tropics. They all belong in the temperate zone. However, one must add that not all countries in the temperate zone have achieved the aspirational PCI yet.

Figure 1. Distance from the Equator and PCI



This trend is reflected in the relation between PCI and maximum temperatures. If we compare the 1978 and 2018 scatter plots (Figure 2), we find that countries with lower maximum temperature forged ahead in the last 40 years in comparison to others among G-30 countries. No country with a maximum above 30C has reached the aspirational PCI yet. Since climate change is expected to raise temperatures, relatively hot countries will face a greater challenge in ensuring healthy working spaces (ILO, 2019; Kjellstrom et al., 2016). It will lead to a larger burden of mortality and morbidity as well as add to the costs of adaptation. On the production front, maintaining efficient work conditions, productivity and growth would be a challenge for these countries.

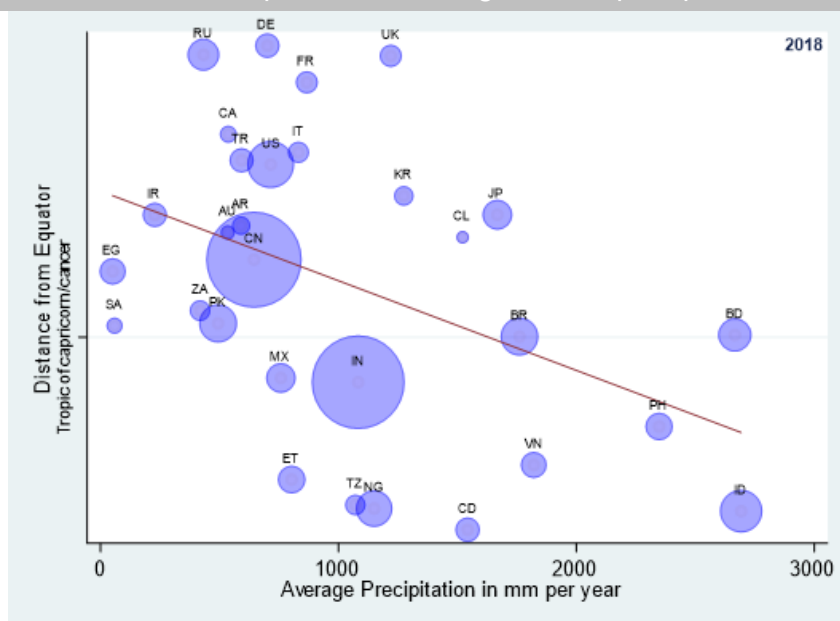
Figure 2. PCI and Maximum Temperatures



There is another aspect of weather that is impacted by climate change -- precipitation. Extreme rainfall events would lead to two diverse outcomes -- the lack of it will lead to droughts (and heatwaves, forest fires), and the excess of it would cause flooding and landslides (IPCC, 2014b;

Tabari, 2020). While it may seem that drought and flooding events would be spatially distanced but there is increasing evidence that the contrary may be true. Marengo et al. (2020) provide evidence from Sao Paulo of a shift in weather patterns and temporal dynamics (also called the inter-annual variability) with a bunching of high precipitation days and a more extensive duration of zero precipitation days. This is not unique to Sao Paulo and is observed in different parts of the world. It has implications for agricultural productivity and sustainability in many countries, as evidenced in the high PCI countries like the United States (Shortridge, 2019), low PCI countries like Ethiopia (Asfaw et al., 2018), and Lower Middle PCI like India (Kulkarni et al., 2020a). If we examine the scatter plot of countries linking distance from the equator with the average annual precipitation of 2018, we find that countries have a weak inverse relationship between the two (Figure 3). It is also found that countries in warmer climatic zones are likely to experience greater variation in precipitation (Pendergrass et al., 2017).

Figure 3. Distance from the Equator and Average Annual precipitation



In order to complete the hydrological cycle, we should also look at the effect of climate change, especially, global warming on ocean circulation systems and geography, which is equally complex (Abraham et al., 2013). There are predictions that the Gulf Stream, which brings warmth to Europe, may weaken and could cause (a) more storms (both frequency and intensity) and severe winters in the United Kingdom, (b) heatwaves to Europe and (c) sea-level rise in the eastern coast of the United States, among other impacts (Caesar et al., 2021; Thomalley et al., 2018).

Therefore, the challenges that geographical location poses for human wellbeing are not unidirectional and heterogeneous. We next look at the sector that is most directly dependent on climatic conditions, namely agriculture.

3.2 Agriculture and Food Security

Food security has been a major concern in developing countries. This arises from two different but not unrelated axes in both urban and rural regions. One is driven by market-oriented fiscal restructuring in the economy. The rural peasantry and small farmers get disenfranchised by (a) reduced budgetary support (by way of removing input subsidies, offering floor support prices for agriculture, public investment in irrigation, among others) (Mishra, 2020) (b) trade liberalisation, which increases the volatility of agricultural prices and puts pressure on domestic agricultural prices and farm incomes (Patnaik, 2002), and (c) corporatisation of farming (Lobao and

Stofferahn, 2008; Lyson and Welsh, 2005). Restrictions on access to minor forest produce to meet conservation targets would also affect access to food for forest-dependent communities (Guha, 1994). What affects all rural households is the loss of their production base due to reduced natural capital (Wynants et al., 2019). This could occur for multiple reasons (Kareiva et al., 2011), including land use land cover changes (Yan et al., 2009).

Trade liberalisation, especially in developing countries, also impacts the industrial structure, ownership, labour market, and wages (Acosta and Montes-Rojas, 2014). It is typically accompanied by the dismantling of labour laws and informalisation of production (D'souza and Naik, 2018; Ghosh, 2021) on the pretext to achieve cost reduction and trade competitiveness (Chandrashekhar and Pal, 2006). A phenomenon often described as a “race to the bottom” (Taylor and Ömer, 2019). A consequence of these processes is wage suppression in urban production sectors, loss of formal regular urban industrial employment, increasing the vulnerability of the urban poor (UNCTAD, 2006). Such policies are often accompanied by a dismantling of the public distribution system, reduction in social security expenditures, limiting the access to health and education for the urban poor (Ghosh and Chandrasekhar, 2009). The failure of governments to provide social safety nets to the marginalised in both rural and urban is part of the development crisis that precedes the challenge of climate change (Bhaduri, 2006). The adverse implications of such policies are not limited to the global south but also affect the developed countries (Kiefer and Rada, 2015).

The other axis of food security concerns comes from factors that are global and climate-related. Agriculture is very sensitive to climatic conditions (Zilberman et al., 2004). Global warming is expected to have a differential impact, with some areas in temperate zones likely to gain (“carbon fertilisation effect”). There is debate on the potential gains due to carbon fertilisation effect as there is counter-evidence that suggests that the gains may not be universal (Fan et al., 2020).

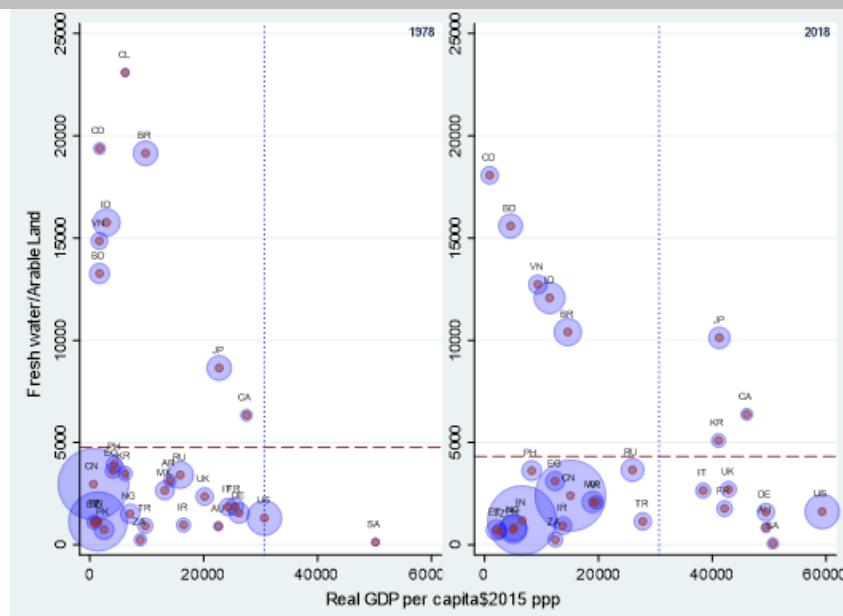
Mendelsohn (2014) finds that in parts of Asia, a 1.5C rise in temperature could lead to a loss of one-fifth of the net crop revenue, especially in South Asia. A 3C rise would be even more damaging and geographically widespread. It has also been suggested that the commonly used weather variables in predicting agricultural productivity, namely temperature and precipitation, may be missing out on other factors like humidity and wind speed which may lead to biased findings. (Zhang et al., 2017) find that when additional variables are included in the analysis, China is likely to see a dramatic decline in yield of rice (36 percent), wheat (18 percent), and corn (45 percent) before this century is out.

There are multiple confounding issues here. First, many regions (Mujumdar et al., 2020; Zhao et al., 2020) face both droughts and floods in succession and sometimes in the same year. Such changes are partly being attributed to a natural process. However, some of it is linked to climate change and anthropogenic intervention by way of land-use change and urbanisation. We discuss this in more detail later in this study.

3.3 Rural Challenge

The development challenge has been conceived by many as the equitable transformation from a low PCI, primarily agriculture-based economy, to a high PCI, primarily industrial society. While some countries hoped to leap-frog their development trajectory from an agriculture-based economy to a service-based economy, the experience of many countries has shown that it was a strategy that did not deliver (Rakshit, 2007; Tejani, 2016). In some instances, the growth of urban centres is driven by the rural-urban wage gap, with the urban centre being seen as a growth nucleus (Zhang and Song, 2003). However, in many instances, this migration itself reflects the rural crisis and a shifting of the burden of vulnerability from the rural to the urban (Deotti and Estruch, 2016). There are distressing reports that in some cases the distress levels have reached such levels that small farmers and agricultural labourers have committed suicide (Nagaraj et al., 2014; Singh et al., 2021). Therefore, no matter how much infrastructure is planned in urban areas, till the rural crisis is addressed, particularly in developing countries, they will continue to face the challenge of managing urbanisation.

Figure 4. Ratio of freshwater availability per unit of arable land and PCI



We examine the change in the availability of freshwater per unit of arable land over the period under study (Figure 4). The horizontal red lines represent the average freshwater per unit of arable land during the respective years (average calculated excluding CL as it was an outlier).¹ There were no countries in 1978 who had both a high PCI and high freshwater availability with respect to arable land. By 2018, there were three countries in this quadrant (Japan, Canada and the Republic of Korea). In 1978, there were no countries in the south-east quadrant (except SA). By 2012, most developed countries had moved to this quadrant indicating the structural transformation that they had been through in this period.

3.4 Migration as an Adaptation strategy

The process of rural-urban migration is well-studied in economics, where the poor move to urban and peri-urban areas to escape rural poverty and seek a better living. It finds a central theme in the Lewis model and the much-debated enclosure movement in Britain and subsequently in other European nations.

Apart from the migration induced by rural agricultural depression and dispossession, there is also an emerging category of human displacement labelled as climate migrants (also sometimes referred to as climate “refugees”) both within nations as well as across nations (Marotzke et al., 2020). Rural-urban migration, as well as international migration, is seen as an adaptation strategy to cope with climate change (McLeman and Hunter, 2010). However, as we have seen in the recent Covid in 2020 lockdown over many months, migrant labour was made unwelcome in their workplace and had to walk back thousands of kilometres over weeks with no transport available even within countries (Bhagat et al., 2020). This is a situation that could happen during extreme climate events too. In such situations, already vulnerable populations could be at higher risk.

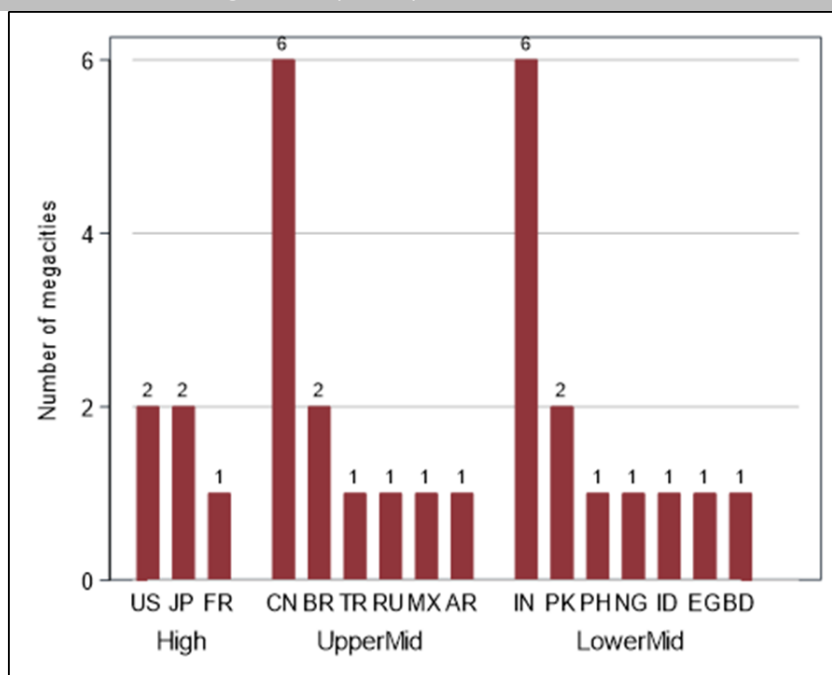
Already, 56 percent of the world’s population lives in urban geographies, and this is projected to increase to 68 percent by 2050 (<https://stats.unctad.org/handbook/Population/Total.html>). The developing economies currently have 51 percent living in urban areas and are projected to go up to 65 percent (by 2050). Developed countries are already at 81 percent and are projected to reach 88 percent (by 2050).

¹ The average freshwater availability (excluding CL as it is an outlier) per unit of arable land in 1978 was 4773 mm/ha and in 2018 it was 4320 mm/ha.

3.5 The Challenge of urbanisation

There are 34 megacities (population more than 10 million) in the world (as of 2020) (<https://www.worlddata.info/megacities.php>). China and India have six each, and the United States, Japan (among the developed and high countries) and Brazil (among the developing and upper-middle-income countries), and Pakistan (among the developing and lower-middle-income countries) have two each (Figure 5). Five other countries from the lower middle income, four from the upper-middle, and one from the high-income countries have one megacity each.

Figure 5. Distribution of megacities (2020)



Source: <https://www.worlddata.info/megacities.php>.

This adaptation strategy in developing countries brings with it its own challenges. Urban infrastructure is grossly inadequate for day-to-day living in terms of health, drainage, drinking water, clean air.

Figure 6 presents the share of the urban population and the PCI of G-30 countries and demonstrates that across the board, urbanisation has been rising. The figure juxtaposes the status of 1978 against that of 2018. Each year is split into four quadrants -- on the x-axis, it levels with the United States PCI in 1978 (at \$2015 PPP), and on the vertical axis, it levels with 50 percent (just as an equal marker for half proportion).

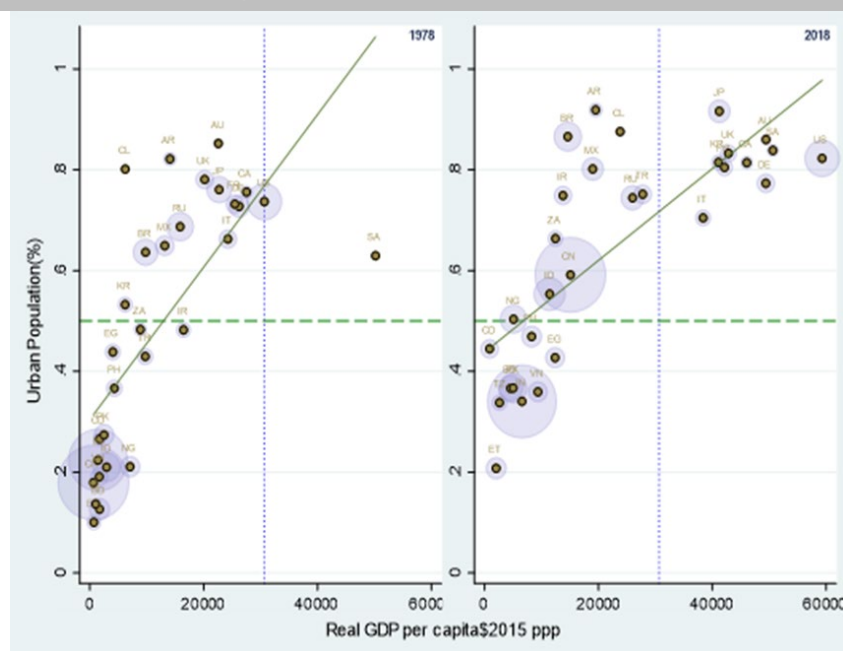
The countries in the 3rd quadrant (south-west, SW) have low income and low urban populations, and in contrast, those in the first quadrant (north-east, NE) have high income and high urban populations. The countries in the 2nd quadrant (northwest NW) have a high urban population but a lower income than the United States PCI in 1978. Contrarily, countries in the 4th quadrant (south-east, SE) have a high urban population but a lower income than the United States PCI in 1978. This quadrant represents the collection of countries that have high PCI but low urban populations. This is an empty set both in 1978 and 2018. We could take this observation as implying that, as of the current state of technology, it is a near impossibility to achieve high PCI but manage to do it with low urbanisation.

In 1978 only one country was in the NE quadrant -- Saudi Arabia. As we have explained earlier, this country is an exception. There are no countries in the NE quadrant. All countries (except

Saudi Arabia) are below the United States PCI of 1978. One group is in the NW quadrant, and another is in the SW quadrant with China and India, both low in the SW quadrant.

In 2018, the picture changed significantly. The spread of countries is larger. Ten countries now are in the NE quadrant, nine countries are in the SW quadrant, and the remaining eleven are in the NW quadrant. These are Argentina, Brazil, Chile, China, Indonesia, Ireland, Mexico, Nigeria, the Russian Federation, Turkey and South Africa. Of these seven countries (Argentina, Brazil, China, Indonesia, Mexico, the Russian Federation, Nigeria) had at least one megacity in 2020. The urban infrastructure in most countries is incapable of handling the rising anthropogenic pressure and is a challenge for urban sustainability. These countries will need support to sustain their rising urban populations, and the urban poor are most vulnerable here.

Figure 6. Share of Urban Population and PCI



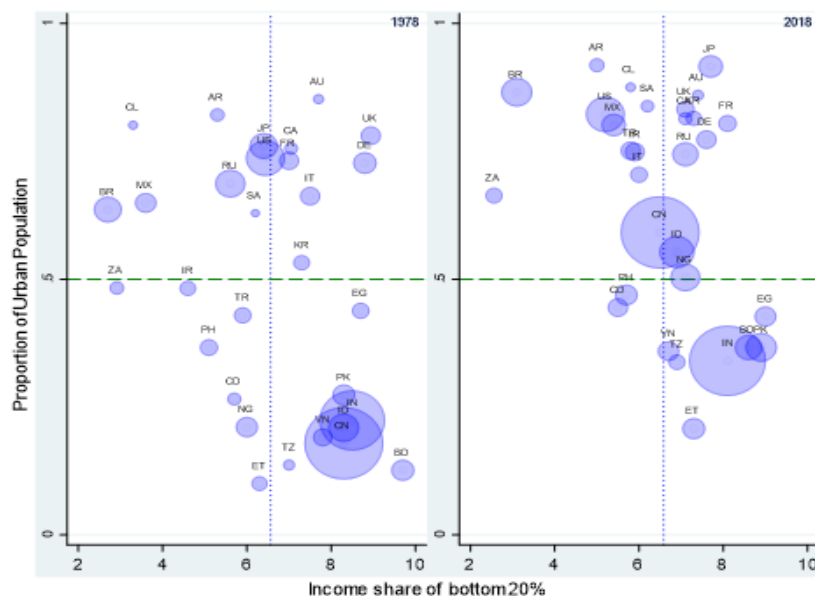
In Figure 7, we present the graph showing the share of the urban population and the share of income of the bottom 20 percent. We briefly discuss the trajectory over the four decades (1978-2018). Again the X-Y space has been divided into four quadrants for analytical convenience.² In 1978, there were countries spread over all the four quadrants. The NE represents the space where there is high urban concentration and a greater share of the bottom 20 percent of the population in income share. The SW represents low urban concentration and also a low share for the bottom 20 percent. In the NW quadrant are those countries that have a high urban population but a low share in income for the bottom 20 percent. In the SE quadrant are those that have a low urban population and a higher share for the bottom 20 percent.

In 1978, there were seven countries in the SW quadrant (the Democratic Republic of Congo, Ethiopia, Ireland, Nigeria, the Philippines, Turkey, South Africa) and eight in the NW quadrant (Argentina, Brazil, Chile, Japan, Mexico, the Russian Federation, Saudi Arabia, United States). By 2018, only two remained in the SW quadrant (Democratic Republic of Congo, the Philippines), but the NW quadrant had eleven countries now (adding China, Ireland, Italy, Turkey, South Africa to). While Ireland, Turkey, and South Africa moved up from low urban to the high urban category but still maintaining a below-average share of income in the bottom 20 percent, China moved from SE to NW, and Italy moved from NE to NW. This suggests there was a rise in urbanisation in China but also a decline in the share of the bottom 20 percent. For Italy, even though it

² The average IYB2 in 1978 was 6.564919 and in 2018 was 6.585311. These values have been used to make the groups for the respective years.

maintained high urban levels, its share of the bottom 20 percent fell below the average of the G-30 countries for that year.

Figure 7. Share of Urban Population and share of bottom 20 percentage in income



The improvement in urban living conditions in the high-income countries and the upper-middle-income countries has come at a considerable cost. One of the biggest challenges of urbanisation is organising transport. Air pollution studies show the high contribution of fossil fuel-based transport vehicles in cities where mass transit has not switched to cleaner fuel. Most developing countries face this challenge.

3.5.1 Air pollution

Two decades back (Mage et al., 1996) projected that air pollution levels in megacities would worsen considerably (especially in those located in developing countries) if mechanisms to control air pollution were not put in place. There is now consistent evidence that with climate change the allergic and respiratory diseases are on the rise, especially in urban areas (Patella et al., 2018). The rapid urban growth in China and India, the two most populous countries in the world, is a matter of global concern. The 47 out of the 50 urban centres of the worst polluted cities and towns (PM_{2.5}) were from China and South Asia (Bangladesh, India and Pakistan) (<https://www.iqair.com/us/world-most-polluted-cities>). Delhi which is the second-largest megacity in India, reported the worst ambient air quality (PM_{2.5}) in 2019.

A Global Burden of Disease 2019 study on India suggests that air pollution (in morbidity and mortality) accounted for nearly 18 percent of the deaths in 2019, translating into an economic loss of \$ 26.5 per capita and a GDP to the tune of \$ 36,804 million (Pandey et al., 2021). Delhi's and the Gangetic plain's problem is further compounded by annual crop residue burning in the neighbouring states adding to the effect of the city's own emissions (Jethva et al., 2019; Kulkarni et al., 2020b). Interestingly, the COVID lockdown period offered scientists an opportunity for a natural experiment for air quality research. Over a three-month period (in early 2020) of lockdown, air quality (PM_{2.5}) showed an improvement of about 65 percent in India and China, suggesting the possibility of curbing air pollution in urban areas (Agarwal et al., 2020). It demonstrated that it is possible to reduce certain emissions rapidly. However, it would require strategic urban planning for urban land use and transport services.

One way to explain this rising pollution in developing countries would be on the lines of the pollution haven hypothesis (Copeland and Taylor, 1994; Taylor, 2005), which suggests that it is

a direct consequence of polluting industries migrating to the global South. Rising environmental regulation in developed countries pushes them to regions where governments are more accommodative of pollution. In such countries, policy-makers treat the rising pollution as a tradeoff with higher growth. Although (Grossman and Helpman, 2001) provide counter arguments claiming that trade liberalisation does not increase pollution, the weight of evidence suggests otherwise (Wood et al., 2020). Countries importing pollution-intensive products may insist on strong linkages between trade policies (Copeland, 2000). The opposite will hold true for countries undertaking the import of pollution-intensive goods. They would want unfettered free trade.

3.5.2 Water supply and Drainage

Urban centres in developing countries face the unique challenge of providing drinking water and drainage, especially during extreme climate events. The problem of urban water supply has been a concern for urban planners. Rapid urbanisation has left large segments (about 150 million globally) of the population with day-to-day water shortages (McDonald et al., 2011).

As the precipitation patterns deviate from historical climate regimes and the frequency and intensity of extreme precipitation changes, the pressure on urban drainage infrastructure will grow (Kourtis and Tsihrintzis, 2021). These will particularly affect large urban agglomerations (Dale, 2021) though rural regions too will be affected. Hill regions and coastal regions are, particularly at risk. In hill regions, these result in flash floods, landslides, avalanches, dam bursts (Penna et al., 2013) and can devastate human habitations -- lives, houses and infrastructure rapidly (Kundzewicz et al., 2014). In coastal regions, these events, combined with sea-level rise, high-tide events, and storm surges which can cause widespread damages to life and property (Hallegatte et al., 2013).

Part of the problem planners face is the wide range of predictions with respect to precipitation. If the volume of water needing drainage is difficult to predict, it would be even more difficult to plan infrastructure needs effectively (Filho et al., 2019). Sometimes, local governments in developing countries may not even be aware that there is adequate willingness to pay for urban infrastructure by residents (Mahaprashasta et al., 2021). The reasons for under-investment in public drainage are multiple but often boil down to lack of political will to support public investment or uncertainty about financing options. It is essential, therefore, to examine the trajectory of public investment in the adaptation challenges for climate change. That is the subject matter of the next section.

4. Linking economic development and climate change adaptation

The experience of the last four decades suggests that geographical location and economic transition have placed many countries in the tropics at the juncture where climate change exposure places an additional layer of vulnerability to pre-existing development challenges. The rural poor in the equatorial and tropical regions will have to adapt to variability in precipitation, rising temperature (higher frequency of droughts and floods), which will add a layer of risk for agricultural output. Migration to urban centres would be a natural process in the hope that they would find stable employment and a better living environment. However, due to the informalisation of the production process, lack of urban infrastructure, poor public health, sanitation, and education, they will find it hard to overcome the livelihood challenges that they were hoping to escape by migration. Given the “jobless” growth that the service sector-led strategy has resulted in, unemployment and stagnant wages are likely to add to the challenges that the urban poor will face.

4.1. Role of fiscal policy

The role that governments can play here is significant. We are aware that while the market would respond to many of the climate change adaptation needs of consumers who have the ability to pay. The poor and the marginalised will continue to have to rely on non-market solutions. There is evidence that various community-led initiatives can provide relief by building trust (Dasgupta, 2010) and social capital (Ostrom, 1994). Collective action in managing common property can provide adaptation solutions that provide hope for climate adaptation (Haque et al., 2021). However, community action is often localised and may take long periods to replicate in heterogeneous institutional settings. The probability of success is greater when there is a helpful hand from national governments or international agencies.

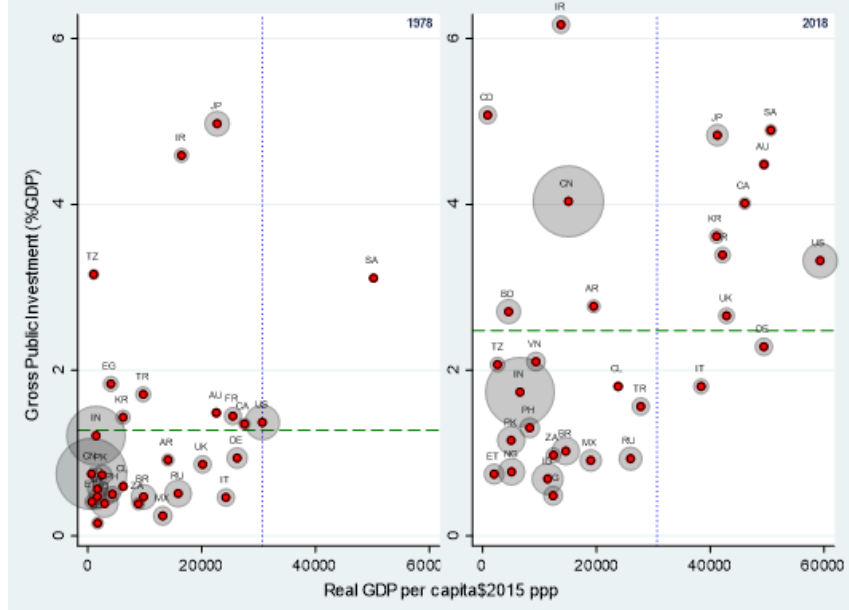
Under these circumstances, the primary responsibility for accelerating climate change adaptation has to come from government intervention. There is a need for large-scale public investment in infrastructure. The failure of the market to respond to these social needs is well-known even in advanced economies (Samuelson, 1954). Governments, therefore, have to re-strategise their fiscal policy if they are to avoid climate calamities like the Covid pandemic has shown the complete lack of public health preparedness globally.

The uncertainty in weather patterns, temperature, precipitation, extreme events due to climate change implies that there will be large uncertainties even in economic processes. Here too, the optimal solution cannot be market-based for multiple reasons – markets for such risks may not exist, and when they do, they are often iniquitous and have meagre coverage (Virk and Atun, 2015). Governments, on the other hand, are able to bear the risk at much lower social costs (Arrow and Lind, 1970).

Public investment in economies with elastic labour supply is expected to have multiplier effects and not encounter problems of “crowding out” or long-term inflation (Izquierdo et al., 2019; Pradhan et al., 1990). Contrarily, public investment is known to have “crowding in” effects in less developed economies (Karun et al., 2020) as it expands the market for private producers and increases consumption by putting income in the hands of the poor (whose marginal propensity to consume is higher). Thus, it addresses the issue of aggregate demand and employment that is a first-level challenge of development.

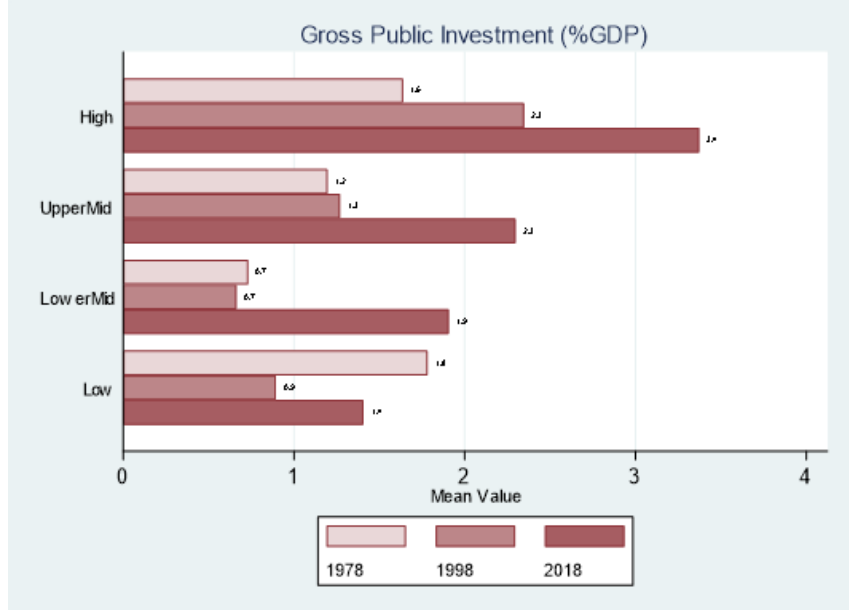
We now look at the level of public investment in these G-30 countries and examine how this has changed in the last four decades (Figure 8). Once again, the scatter diagram has been created in the form of a quadrant for comparative purposes. The green horizontal line represents the average GCF/GDP in each year for the G-30 countries. The countries above the green line spend more than the average, and the countries below the green line spend less than the average. The average itself has gone up over the period, as evident from the Figure. Eighteen countries were spending below the average, and twelve were spending above the average in 1978. In 2018, fourteen countries were spending above the average and 16 were below the average. The countries that made the transition from below the average (in 1978) to above the average (in 2018) are Argentina, Bangladesh, the Democratic Republic of Congo, China and United Kingdom. The countries that receded from above the average (in 1978) to below the average (in 2018) are Egypt, Nigeria, Turkey and United Republic of Tanzania. The rest of the countries did not change their relative position vis-a-vis the average. The countries that remained below the average in both years (1978 and 2018) are Chile, Germany, Ethiopia, Indonesia, India, Italy, Mexico, Philippines, Pakistan, the Russian Federation, Viet Nam and South Africa. Only Germany in this group belongs to the High PCI group. The two low PCI countries in this group are Ethiopia and United Republic of Tanzania, while ET stayed below the average (in both the years), but United Republic of Tanzania receded from being above average in 1978 to being below average in 2018.

Figure 8. Government Gross capital formation (percentage of GDP) and PCI



The GCG/GDP has grown (between 1978-2018) for all groups except the Low-income group (Ethiopia and United Republic of Tanzania) (Figure 9). This would be a concern as these countries urbanise for reasons discussed earlier. The effectiveness of public investment has been a matter of long-standing debate in the literature. In a recent review, (Izquierdo et al., 2019) found that the multiplier effect of public investment is much higher in countries that have lower initial stock of public capital (as a proportion of GDP). Low PCI countries fall in this bracket and therefore are likely to gain with increased public investment.

Figure 9. Government Gross Fixed Capital Formation (percentage of GDP): Group means



Note: NG is excluded from this analysis being an outlier.

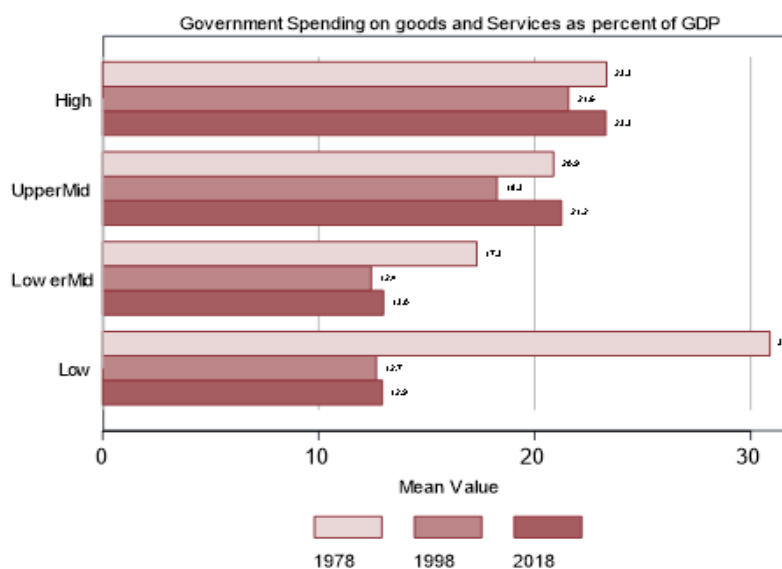
Not only has public-funded capital formation been of interest, but so has the government consumption expenditures. Government consumption (spending on goods and services) forms the other important component of aggregate demand under the control of public policy. This captures the commitment of the state to provide essential services to its citizens. When we look

at the disaggregated picture, we find that while high and upper-middle PCI groups managed to increase their government consumption marginally. In contrast, lower and middle-income countries had reduced their spending as a proportion of GDP (Figure 10).

This has important implications for demand management in economies that are struggling to improve their employment levels as well as the provision of essential services to the poor. Lower government consumption expenditure translates into lesser public medical and educational services, reduction in anti-poverty and employment schemes, pension provisions, all of which have adverse impacts on the poor (Kangas and Palme, 2000). Lower government expenditure is indicative of a decline in welfare expenditure overall. These services are expected to be provided by the private sector. It typically leads to a trajectory where the poor fall into the trap of cyclical poverty, ill-health and growing inequality (Banks et al., 2017).

It also indicates lost opportunities to boost aggregate demand by pursuing a consumption-led growth trajectory in a system where labour supply is elastic. A common concern from conservative policy-makers invokes the problem of financing such expenditures. The argument that higher government expenditure would lead to higher deficits is on weak grounds in labour surplus economies even if one were not to invoke the balanced budget multiplier. The need for using fiscal policy to expand the welfare state would become even more imperative under the threat of climate change. There are two kinds of choices that policy-makers are often faced with. One envisages a small government, low taxes, low government expenditure, and a narrow welfare footprint. Often this institutional setup is driven by the argument that fiscal deficits and public debt have to be kept in check to keep investor confidence buoyant (Wolfson, 2000).

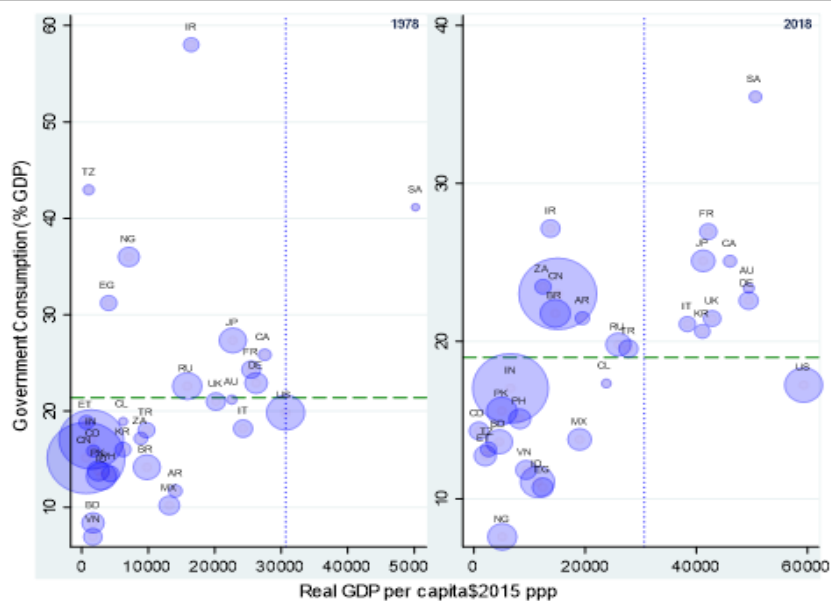
Figure 10. Government Consumption expenditure (percentage of GDP): Group means



The alternative Keynes-Kalecki inspired policy-making could achieve the same small fiscal deficit and low public debt objective if policy-makers chose the alternative of a large government, high government expenditure financed by high taxes. High taxes become politically challenging to implement, and there are “leakages” for various reasons that are well-known in the literature. Alternatively, an expansionary public expenditure could be financed by raising the threshold of fiscal deficits and public debt on principles of “functional” finance (Lerner, 1943), as has been done in many advanced countries during their period of expansion. The additional debt could potentially be adjusted in the long run when the rate of growth exceeds the real interest and the burden of interest and debt declines over growth cycles (Taylor et al., 2012). This would achieve a larger welfare state without affecting the inter-temporal profile of debt. In times of climate

change, with the urgent need for adaptation action, these are choices that governments need to consider when market-based options seem unclear.

Figure 11. Government consumption and PCI



In 1978, five countries were spending more than 30 percent of the GDP on government consumption (Figure 11). In 2018, there is only one -- Saudi Arabia. In 1978, eight countries were spending between 20 percent to 30 percent. In 2018, there were thirteen. In 2018, all countries spending more than 20 percent had a high or upper-middle PCI. In 1978, there were two lower-middle (Egypt, Nigeria) and one low PCI (United Republic of Tanzania) country that spent more than 20 percent. There is only one country whose income is higher than the United States 1978 PCI who spent less than 20 percent of its GDP on government consumption -- it was the United States (which has the highest PCI).

As we have indicated earlier, government intervention in the economy has a direct impact on employment. The workforce participation rate is an important indicator of economic empowerment, especially from a gender perspective. Women's participation in the paid workforce has had increased over time (Alonso-Almeida, 2014) but continues to be significantly unequal (WEF, 2021). The female workforce participation varies across countries and in recent years has even declined in some countries contrary to expectation (Dubey et al., 2017). These are matters of social and economic concern and in need of policy intervention.

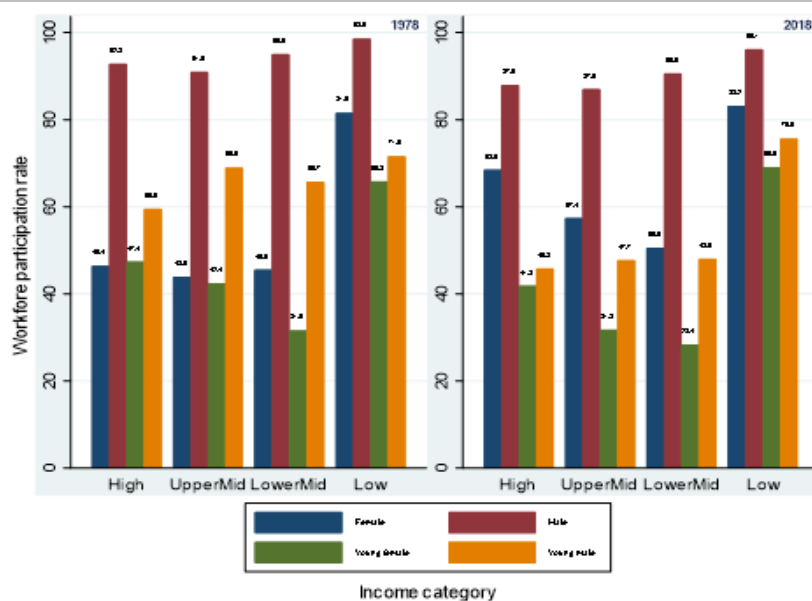
It has been pointed out that these numbers under-represent women's contribution to the economy as they leave out their contribution to unpaid work (Hirway and Jose, 2011; Lahoti and Swaminathan, 2016). Even after one accounts for these unseen contributions, the persisting gender gap in the paid workforce is a worrying factor as it has implications for women's employment choices and economic empowerment (Cornwall and Rivas, 2015), gender equality (Blau et al., 2012) and is known to impact on violence against women (Aizer, 2010). Climate change is expected to have additional adverse impacts on women's empowerment (Denton, 2002), including violence (Sekhri and Storeygard, 2014).

The state can play a transformative role by focusing on women's empowerment through multiple strategies (Duflo, 2012) to address the gender gaps as part of the climate adaptation strategy. Women's empowerment would have important contributions to building climate resilience in the long run (Alston, 2013; Chirambo, 2017). Ensuring that the girls child does not drop out of school and gains the skills to participate in the paid workforce would help in increasing human capital accumulation, productivity and have a positive impact on long term growth (Agénor and Canuto,

2015). By making it legally possible for women to have equal rights to inheritance (Roy, 2015), governments can ensure that women are able to have some assets to adapt to climate change (Goh, 2012). This would also help in consumption smoothing in case of extreme events. A guaranteed employment programme would help women build their own assets, and access to public health would have inter-generational health benefits (Watts et al., 2019). Needless to say, there cannot be a one policy fits all approach and must be nuanced as per national needs (Arora-Jonsson, 2011).

In this context, we next look at the workforce participation rate disaggregated by gender over the last four decades.

Figure 12. Workforce participation rate and PCI



The story on the employment front (measured with the workforce participation rate WFP) is mixed (Figure 12). The adult female workforce participation rate (NLNWF) is lower than male (NLNWM) in all categories of PCI and in both years. Having said that, we observe that NLNWF is higher for all categories in 2018 in comparison to 1978, so that should be good news for gender empowerment. However, the young female participation rate is lower than the adult one in all PCI groups in 2018. This matches the comparison between adult male and young male participation rate. The gender gaps in employment have been cause for concern in the feminist and developmental literature, as discussed earlier. The persistent employment gap has been seen as a consequence of labour market discrimination. This has been all-pervasive, whether it is measured by wage differentials (O'Neill, 2003), employment gaps (World Bank, 2014), political representation (Omvedt, 2005), corporate leadership (WEF, 2021), among others.

Progressive states have taken multiple pathways to address these gaps – either by way of legislation or by moral suasion. Many countries have experimented with political representation in elected government as well as corporate boards mandatory by reserving seats for women. There is evidence that this has given greater voice to women in decision-making and led to sustainable outcomes (Bose and Das, 2018; Matsa and Miller, 2013; Valls Martínez et al., 2020).

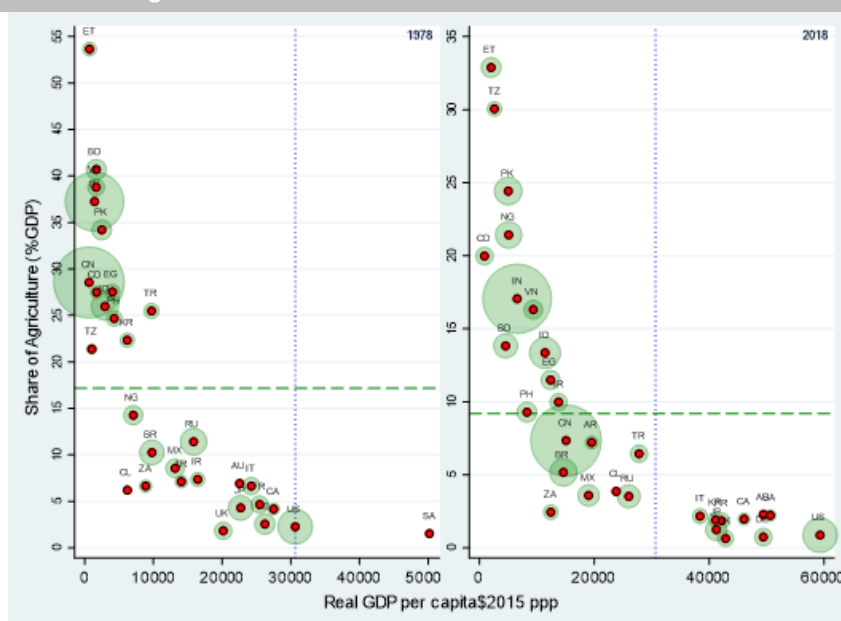
4.2 Structural change as a pathway to climate adaptation

In light of the discussion above, it is crucial to understand that state intervention could enhance aggregate demand and incomes in the economy. However, to meet the ecology-economy balance for sustainable development, there is a need for a planned structural transformation. This would help developing countries avoid the trap of rural unemployment and agrarian distress

due to climate change and the informalisation of urban economic processes. Countries that relied on service sector-led growth have found that this has neither addressed issues of employment (especially educated unemployed) nor has it moved the economy to sustainable growth. In contrast, they have led to “jobless” growth, growing insecurity in the labour market and wage depression.

As evident from the trajectory of developed countries (discussed below), there is a need for better planned industrial expansion. However, in the context of climate change, this will have to be low-carbon green technology-based growth. While the growth of the primary sector (agriculture, fisheries) would be necessary as a supportive sector, the structural transformation that developing countries would have to rely on for sustainable development is industrialisation based on green technologies. The service sector would play an important role, but current evidence suggests that a development strategy based on services is fragile, as has become evident during the current pandemic (<https://www.unwto.org/tourism-and-covid-19-unprecedented-economic-impacts>).

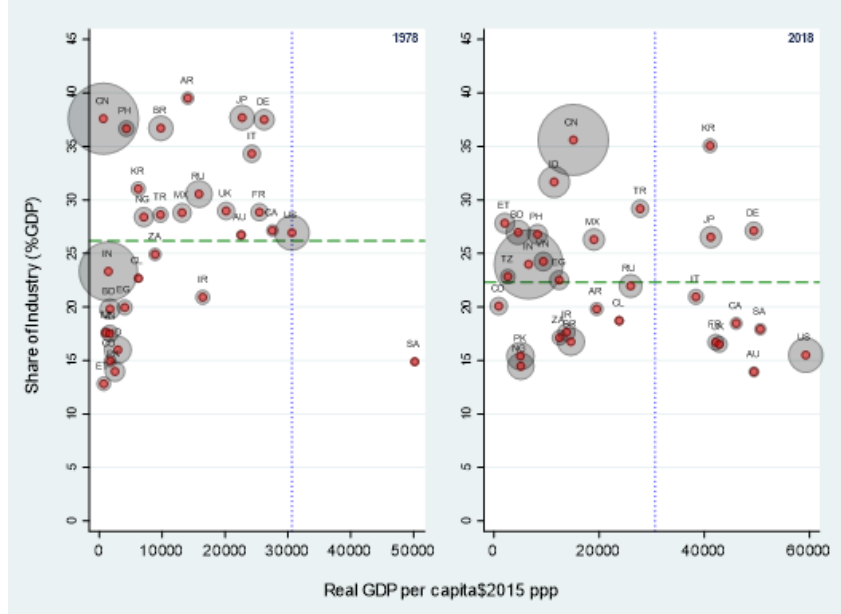
Figure 13. Share of agriculture in GDP and PCI



We look at the structural change over the last four decades, starting with agriculture. In Figure 13, we display the scatter plot between the share of agriculture in GDP for 1978 and 2018. The average share was 17.16 percent in 1978, and it came down to 9.18 percent in 2018. If we look at the trajectory of all countries, we find that in 1978 only seven countries had share less than 5 percent. By 2018, 14 countries had a share below 5 percent. There is of course, a clear downward slope to the scatter in both years. In 1978, there were 13 countries with a share above 20 percent, but by 2018 there were only 4 percent. The growth of PCI is strongly and negatively correlated to the share of income coming from agriculture. In some ways, this is also reflective of the crisis of agricultural growth and prices.

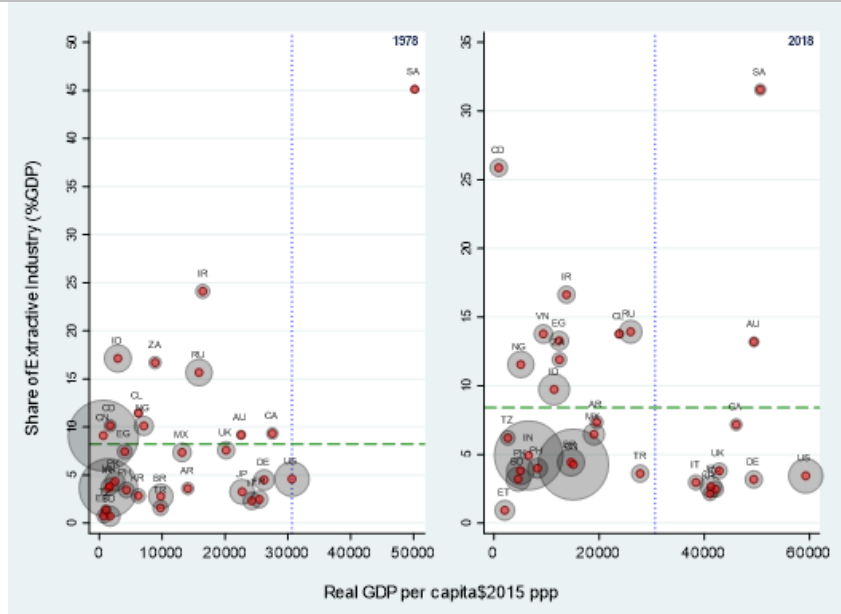
The share of industries, on the other hand, has also come down a little bit over the last four decades (Figure 14). Three countries have moved into the first quadrant (more than average industrial share and above the United States’s 1978 income, namely Japan, Germany and the Republic of Korea. While Japan and Germany have been in the high PCI group for some time now, the Republic of Korea is a new entrant. China still has some way to go, but it has kept industry share above 35 percent but moved closer to the United States 1978 PCI. India has moved from below the G-30 average to above the G-30 average in 2018.

Figure 14. Share of industry in GDP and PCI



What has also been under discussion is the role of the extractive industry in climate change adaptation. The mitigation efforts focused on reducing emissions have been arguing that extractive industries have a larger ecological footprint than conventional industries.

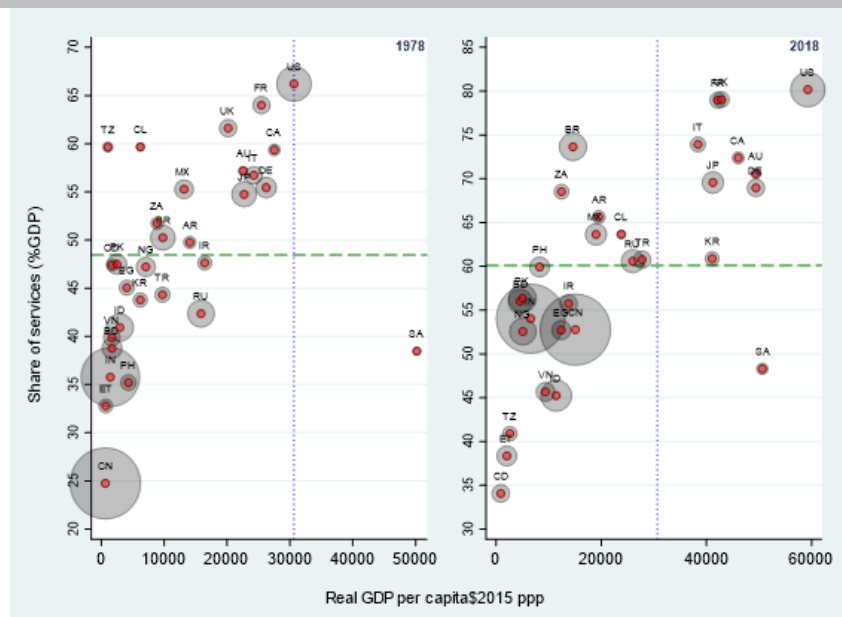
Figure 15. Share of extractive industries in GDP and PCI



The share of extractive industries in GDP has only marginally increased (8.2% in 1978 and 8.4 percent in 2018, Figure 15). SA continues to be the country with the highest share of GDP coming from extractive industries though its own share in the GDP has declined from about 45 percent to a little above 30 percent. China has seen a rapid decline in its share of extractive industry contribution but that has not affected its growth trajectory. In contrast, CO has seen a rapid rise in its share of extractive industries, but it has not transformed into significant development outcomes. Australia, on the other hand, has witnessed a significant rise in its share but also its income.

The most significant structural transformation that has taken place is in the growth of the service sector. In Figure 16 below, we present the scatter plot of the share of services with PCI for the two periods. The rapid rise in the share of services of the high PCI countries is evident below.

Figure 16. Share of services in GDP and PCI



The world average share has gone up from below 50 percent to above 60 percent in four decades. While the US has gone up from about 65 percent to 80 percent, China has gone up from 25 percent to above 50 percent and India from about 35 percent to about 55 percent.

5. Discussion

Climate change has deepened the vulnerability of multiple groups of the population, particularly the poor, those exposed to weather changes both from extreme events caused damages as well as livelihood loss (IPCC, 2018). The well-being of these groups can be enhanced sustainably by increasing their adaptive capacity (Alston, 2013; UNEP, 2021). This would require an upgradation of their socio-economic condition, a combined effort of endogenous adaptation efforts and state support to make a structural transformation feasible.

Human-nature interactions occur at multiple levels and in multiple ways in a complex social-ecological system (SES) context (Ostrom, 2009). There is a large consensus that sustainability would require adjustments either within the social-ecological system (SES) or change the framework of relationships itself (Barnes et al., 2020). It has been pointed out that adaptation intervention, especially externally funded intervention, should be done with sensitivity; otherwise, they may exacerbate existing vulnerabilities. (Eriksen et al., 2021) argue that unless marginalised populations are made partners in the adaptation strategies and made locally relevant, there is a risk of adverse outcomes. The creation of green infrastructure can lead to climate injustice as the poor are evicted from urban spaces in the name of climate adaptation (Anguelovski et al., 2019). The relationship between urbanisation and development is neither simple nor linear. It depends on a multiple set of factors, including supportive infrastructure investment (Turok and McGranahan, 2013). However, rapid urban infrastructure has not kept pace with rapid urbanisation in most developing countries and there is urgent need for fresh investments and expansion of public services.

The pathway to sustainable development would lie in overcoming existing development gaps of unemployment, lack of public services (health, education, transport), agriculture (including

irrigation and farm prices), urban infrastructure, affordable housing which help reduce vulnerability of the marginalised groups. Unfortunately, development expenditures are the first items that get reduced when there is fiscal restructuring (Chakraborty and Dash, 2017).

The SIDS regions need special attention as they will be at the forefront of sea-level rise and extreme weather events (Petzold and Magnan, 2019; Robinson, 2020). They will have to reorganise their economic strategies including tourism that forms a major income source for many of these regions (Pratt, 2015). They will need support for infrastructure and technology to undertake robust adaptation measures without significantly disturbing the sensitive ecosystems in these regions and social relations that have sustained their lives.

A large part of the adaptation process will involve new infrastructure projects. However, there is a need for sensitivity in planning large scale infrastructure projects if these disturb the ecosystem services significantly (Bebbington et al., 2020). The tropical countries are some of the most species-rich regions (Brown et al., 2020; Trew and Maclean, 2021). The need to protect biodiversity for human well-being cannot be over-emphasised (Dasgupta, 2021). International cooperation is critical not only for development and economic reasons but also for ecosystem and biodiversity conservation. Climate change will cause the relocation of many species geographically (Tittley et al., 2021). This may involve species migration across national borders. Ecological conservation would then require greater coordination and cooperation in addition to economic development efforts. In developing countries, there continue to be significant segments of the population who meet their consumption needs and drive their livelihood directly from nature (Angelsen et al., 2014). Therefore, the new investments must be planned in a manner that ensures a non-declining intertemporal trajectory of comprehensive wealth (Arrow et al., 2012; UNDP, 2010).

There is a concern that macroeconomic analysis at the country level often overlooks what happens within the country, especially the poor, who are more vulnerable than the average citizen (Hallegatte et al., 2013). A growing literature documents the conflicts arising from increased extractive demand for resources that form the survival base for many communities (Martinez-Alier, 2002). These conflicts evolve due to multiple reasons including either different notions of sustainability, inadequate sharing of resource rents, and lack of community participation in development dialogue (Scheidel et al., 2018). When the development process is participative and there is community involvement in planning and implementation, they lead to stable and sustainable outcomes (Haque et al., 2021; Ostrom, 1994). There is a need for development dialogue with citizen groups when planning for social transformation and climate adaptation. These will allow policy intervention that takes into account specificities and people's aspirations in different regions.

Adaptation strategies should avoid re-enforcing pre-existing unequal social and economic hierarchies, especially in the context of race and gender. The gap in wealth, education, health and role in decision-making (WEF, 2018) could be a continuing barrier to adaptation to climate change (Jerneck, 2018). Identities, whether it is race or gender, are sites of social allocation of power and control (West and Zimmerman, 1987). It is anticipated that climate change will have heterogeneous impacts on different groups (Nurse-Bray, 2015). A positive intervention by the governments as proposed in the SDGs would help in addressing the racial and gender inequalities that have been historical institutionalised.

Adaptation for sustainability cannot succeed without changes in consumer behaviour. We are aware that there are two types of dynamics at work as far as consumer behaviour is concerned. On the one hand, there is a demand from conscious consumers for green products that have triggered intense effort to find low-carbon production technologies and thereby reduce emissions. On the other hand, it is the effort to achieve higher income that will bring with it demand for more commodities and potentially greater emissions. The latter outcome is often referred to as the "rebound effect", especially in the context of energy (Colmenares et al., 2020). An important connect to aggregate emission reduction strategy is a change in consumption behaviour (Bjelle et al., 2021). There are many ways to alter consumption behaviour --

persuasion, consumer sensitisation (awareness), administration diktat, incentive, to name a few. While no single strategy would work everywhere, each country would have to find the appropriate combination of strategies depending on the country conditions.

The challenge for developing countries to undertake climate change adaptation would be to reduce vulnerabilities – some of which are climate-related. Some are pre-existing ones that have been aggravated by climate variation. In a global macroeconomic landscape where finance capital is increasing its control over macroeconomic policy in developing countries, the global effort must focus on strengthening the domestic capabilities of developing nations to transform and leapfrog to a green economy structurally. This would be possible only if developed countries agree on technology transfer to aid robust industrial growth. However, that would only be a partial solution that may temporarily reduce emissions. For a sustainable solution, the global macroeconomic framework would have to overcome conservative policies of “sound finance” and accommodate greater fiscal independence for developing countries to fund domestic social safety nets, provide guaranteed employment and build green infrastructure.

References

- Abraham J P, Baringer M, Bindoff N L, Boyer T, Cheng L J, Church J A, Conroy J. L., Domingues C M, Fasullo J T, Gilson J, Goni G, Good SA, Gorman J M, Gouretski V, Ishii M, Johnson GC, Kizu S, Lyman JM, Macdonald A M, ... Willis J K (2013). A review of global ocean temperature observations: Implications for ocean heat content estimates and climate change. *Reviews of Geophysics*. 51(3): 450–483. Available at <https://doi.org/10.1002/rog.20022>
- Acosta P and Montes-Rojas G (2014). Informal jobs and trade liberalisation in Argentina. *The Journal of Development Studies*. 50(8): 1104–1118. Available at: <https://doi.org/10.1080/00220388.2014.919381>
- Agarwal A, Kaushik A, Kumar S and Mishra R K (2020). Comparative study on air quality status in Indian and Chinese cities before and during the COVID-19 lockdown period. *Air Quality, Atmosphere, & Health*. 13: 1167–1178. Available at <https://doi.org/10.1007/s11869-020-00881-z>
- Agénor P-R and Canuto O (2015). Gender equality and economic growth in Brazil: A long-run analysis. *Journal of Macroeconomics*. 43: 155–172. Available at <https://doi.org/10.1016/j.jmacro.2014.10.004>
- Aizer A (2010). The gender wage gap and domestic violence. *American Economic Review*. 100(4): 1847–1859. Available at <https://doi.org/10.1257/aer.100.4.1847>
- Alonso-Almeida M del M (2014). Women (and mothers) in the workforce: Worldwide factors. *Women's Studies International Forum*, 44: 164–171. Available at <https://doi.org/10.1016/j.wsif.2014.01.010>
- Alston M (2013). Women and adaptation. *WIREs Climate Change*. 4(5): 351–358. Available at <https://doi.org/10.1002/wcc.232>
- Angelsen A, Jagger P, Babigumira R, Belcher B, Hogarth N J, Bauch S, Börner J, Smith-Hall C and Wunder S (2014). Environmental income and rural livelihoods: A global-comparative analysis. *World Development*. 64 (Suppl.1): S12–S28. Available at <https://doi.org/10.1016/j.worlddev.2014.03.006>
- Anguelovski I, Connolly JJT, Pearsall H, Shokry G, Checker M, Maantay J, Gould K, Lewis T, Maroko A and Roberts J T (2019). Opinion: Why green “climate gentrification” threatens poor and vulnerable populations. *Proceedings of the National Academy of Sciences*. 116(52): 26139–26143. Available at <https://doi.org/10.1073/pnas.1920490117>
- Arnell NW, Lowe JA, Challinor AJ and Osborn T J (2019). Global and regional impacts of climate change at different levels of global temperature increase. *Climatic Change*. 155(3): 377–391. Available at <https://doi.org/10.1007/s10584-019-02464-z>
- Arora-Jonsson S (2011). Virtue and vulnerability: Discourses on women, gender and climate change. *Special Issue on The Politics and Policy of Carbon Capture and Storage*. 21(2): 744–751. Available at <https://doi.org/10.1016/j.gloenvcha.2011.01.005>
- Arrow KJ and Lind RC (1970). Uncertainty and the evaluation of public investment decisions. *The American Economic Review*. 60(3): 364–378. Available at <http://www.jstor.org/stable/1817987>
- Arrow KJ, Dasgupta P, Goulder L H, Mumford KJ and Oleson K (2012). Sustainability and the measurement of wealth. *Environment and Development Economics*. 17(03): 317–353. Available at <https://doi.org/10.1017/S1355770X12000137>

- Asfaw A, Simane B, Hassen A and Bantider A (2018). Variability and time series trend analysis of rainfall and temperature in northcentral Ethiopia: A case study in Woleka sub-basin. *Weather and Climate Extremes*. 19: 29–41. Available at <https://doi.org/10.1016/j.wace.2017.12.002>
- Banks LM, Kuper Hand Polack S (2017). Poverty and disability in low- and middle-income countries: A systematic review. *PLOS ONE*. 12(12): e0189996. <https://doi.org/10.1371/journal.pone.0189996>
- Barnes M L, Wang P, Cinner J E, Graham NAJ, Guerrero AM, Jasny L, Lau J, Sutcliffe S and Rand Zamborain-Mason J (2020). Social determinants of adaptive and transformative responses to climate change. *Nature Climate Change*. 10(9): 823–828. Available at <https://doi.org/10.1038/s41558-020-0871-4>
- Bebbington A, Chicchon A., Cuba N, Greenspan E, Hecht S, Bebbington D H, Kandel S, Osborne T, Ray R, Rogan J and Sauls L (2020). Opinion: Priorities for governing large-scale infrastructure in the tropics. *Proceedings of the National Academy of Sciences*. 117(36): 21829–21833. Available at <https://doi.org/10.1073/pnas.2015636117>
- Bhaduri A (2006). The politics of ‘Sound Finance’. *Economic and Political Weekly*. 41(43): 4569–4571.
- Bhaduri A (2009). Understanding the financial crisis. *Economic and Political Weekly*. 44(13), 123–126.
- Bhagat RB, R.S., R., Sahoo, H., Roy, A. and Kand Govil, D. (2020). The COVID-19, migration and livelihood in India: Challenges and policy issues: Challenges and Policy Issues. *Migration Letters*. 17(5): 705–718. <https://doi.org/10.33182/ml.v17i5.1048>
- Bjelle E L, Wiebe KS, Többen J, Tisserant A, Ivanova D, Vita Gand Wood R (2021). Future changes in consumption: The income effect on greenhouse gas emissions. *Energy Economics*. 95: 105114.
- Blau FD., Gielen, AC and Zimmermann KF (2012). *Gender, Inequality, and Wages* (1st ed). Oxford University Press. Oxford.
- Bose Nand Das S (2018). Political reservation for women and delivery of public works program. *Review of Development Economics*. 22(1): 203–219. Available at <https://doi.org/10.1111/rode.12336>
- Brown S C, Wigley TML, Otto-Bliesner BL, Rahbek Cand Fordham D A (2020). Persistent Quaternary climate refugia are hospices for biodiversity in the Anthropocene. *Nature Climate Change*. 10(3): 244–248. Available at <https://doi.org/10.1038/s41558-019-0682-7>
- Buchmann C, DiPrete TA and McDaniel A (2008). Gender inequalities in education. *Annual Review of Sociology*. 34(1): 319–337. Available at <https://doi.org/10.1146/annurev.soc.34.040507.134719>
- Buchner B, Clark A, Falconer A, Macquarie R, Meattle C, Tolentino and Wetherbee C (2019). *Global Landscape of Climate Finance 2019*. Climate Policy Initiative. London. Available at <https://climatepolicyinitiative.org/publication/global-climate-finance-2019/>
- Caesar L, McCarthy GD, Thornalley DJR, Cahill N and Rahmstorf S (2021). Current Atlantic Meridional Overturning Circulation weakest in last millennium. *Nature Geoscience*. 14:118–120. Available at <https://doi.org/10.1038/s41561-021-00699-z>
- Campbell S, Remenyi T A, White C and Johnston FH (2018). Heatwave and health impact research: A global review. *Health & Place*. 53: 210–218. Available at <https://doi.org/10.1016/j.healthplace.2018.08.017>
- Chakraborty Pand Dash BB (2017). Fiscal reforms, fiscal rule, and development spending: How Indian States have performed? *Public Budgeting & Finance*. 37(4): 111–133. Available at <https://doi.org/10.1111/pbaf.12161>
- Chandrashekhara CP and Pal P (2006). Financial liberalisation in India: An assessment of its nature and outcomes. *Economic and Political Weekly*. 41(11): 975–988. Available at <http://www.jstor.org/stable/4417962>
- Childs Sand Lovenduski J (2013). *Political Representation*. Oxford University Press. Oxford.
- Chirambo D (2017). Enhancing climate change resilience through microfinance: Redefining the climate finance paradigm to promote inclusive growth in Africa. *Journal of Developing Societies*. 33(1): 150–173. Available at <https://doi.org/10.1177/0169796X17692474>
- Colmenares G, Löschel A and Madlener R (2020). The rebound effect representation in climate and energy models. *Environmental Research Letters*. 15(12): 123010. <https://doi.org/10.1088/1748-9326/abc214>
- Copeland BR (2000). Trade and environment: Policy linkages. *Environment and Development Economics*. 5(4): 405–432. Available at <http://www.jstor.org/stable/44404309>
- Copeland BR and Taylor MS (1994). North-South Trade and the environment. *The Quarterly Journal of Economics*. 109(3): 755–787. Available at <https://doi.org/10.2307/2118421>
- Cornwall A and Rivas AM (2015). From ‘gender equality and ‘women’s empowerment’ to global justice: Reclaiming a transformative agenda for gender and development. *Third World Quarterly*. 36(2): 396–415. Available at <https://doi.org/10.1080/01436597.2015.1013341>

- Cripps F, Izurieta A and Vos R (2010). *The UN DESA Global Policy Model (GPM): Technical Description of GPM version 3.0*. United Nations. Available at http://www.un.org/en/development/desa/policy/publications/ungpm/gpm_technicaldescription_main_2010.pdf
- Dale M (2021). Managing the effects of extreme sub-daily rainfall and flash floods—A practitioner’s perspective. *Philosophical Transactions of the Royal Society A: Mathematical, Physical and Engineering Sciences*. 379(2195): 20190550. <https://doi.org/10.1098/rsta.2019.0550>
- Dasgupta P (2010). A matter of trust: Social capital and economic development. *Revue d’économie du développement*. 18(4): 47–96.
- Dasgupta P (2021). *The Economics of Biodiversity: The Dasgupta Review*. HM Treasury. London. Available at https://assets.publishing.service.gov.uk/government/uploads/system/uploads/attachment_data/file/957291/Dasgupta_Review_-_Full_Report.pdf
- Deere C D, Oduro AD, Swaminathan Hand Doss C (2013). Property rights and the gender distribution of wealth in Ecuador, Ghana and India. *The Journal of Economic Inequality*., 11(2), 249–265. Available at <https://doi.org/10.1007/s10888-013-9241-z>
- Denton F (2002). Climate change vulnerability, impacts, and adaptation: Why does gender matter? *Gender & Development*. 10(2): 10–20. <https://doi.org/10.1080/13552070215903>
- Deotti Land Estruch E. (2016). *Addressing Rural Youth Migration at its Root Causes: A Conceptual Framework*. Food and Agriculture Organization of the United Nations. Rome. Available at <http://www.fao.org/3/i5718e/i5718e.pdf>
- D’souza SA and Naik PK (2018). Trade liberalisation, capital-intensive export and informalisation: A case study of India’s manufacturing sector. *The Indian Journal of Labour Economics*. 61(2): 377–399. Available at <https://doi.org/10.1007/s41027-018-0136-1>
- Dubey A, Olsen Wand Sen K (2017). The decline in the labour force participation of rural women in India: Taking a long-run view. *The Indian Journal of Labour Economics*, 60(4), 589–612. Available at <https://doi.org/10.1007/s41027-017-0085-0>
- Duflo E (2012). Women empowerment and economic development. *Journal of Economic Literature*. 50(4): 1051–1079. Available at <https://doi.org/10.1257/jel.50.4.1051>
- Eriksen S, Schipper E L F, Scoville-Simonds M, Vincent K, Adam HN, Brooks N, Harding B, Khatri D, Lenaerts L, Liverman D, Mills-Novoa M, Mosberg M, Movik S, Muok B, Nightingale A, Ojha H, Sygna, L, Taylor M, Vogel Cand West J J (2021). Adaptation interventions and their effect on vulnerability in developing countries: Help, hindrance or irrelevance? *World Development*. 141: 105383.
- Fan X, Cao X, Zhou H, Hao L, Dong W, He C, Xu M, Wu H, Wang L, Chang Z and Zheng Y (2020). Carbon dioxide fertilization effect on plant growth under soil water stress associates with changes in stomatal traits, leaf photosynthesis, and foliar nitrogen of bell pepper (*Capsicum annuum* L.). *Environmental and Experimental Botany*. 179: 104203. Available at <https://doi.org/10.1016/j.envexpbot.2020.104203>
- Filho WL, Balogun A-L, Olayide OE, Azeiteiro UM, Ayal DY, Muñoz PDC, Nagy, GJ, Bynoe P, Oguge O, Toamukum NY, Saroar Mand Li C (2019). Assessing the impacts of climate change in cities and their adaptive capacity: Towards transformative approaches to climate change adaptation and poverty reduction in urban areas in a set of developing countries. *Science of The Total Environment*. 692: 1175–1190. Available at <https://doi.org/10.1016/j.scitotenv.2019.07.227>
- Frame DJ, Rosier SM, Noy I, Harrington LJ, Carey-Smith T, Sparrow SN, Stone D and Dean S . (2020). Climate change attribution and the economic costs of extreme weather events: A study on damages from extreme rainfall and drought. *Climatic Change*. 162(2): 781–797. Available at <https://doi.org/10.1007/s10584-020-02729-y>
- Frémeaux N and Leturcq M (2020). Inequalities and the individualization of wealth. *Journal of Public Economics*. 184: 104145.
- Gallagher KP and Kozul-Wright, R. (2019). *A New Multilateralism for Shared Prosperity: Geneva Principles for a Global Green New Deal*. Boston University Global Development Policy Center and UNCTAD. Boston and Geneva. Available at <http://www.bu.edu/gdp/a-new-multilateralism-for-shared-prosperity>
- Garcia-Moreno Cand Watts C (2011). Violence against women: An urgent public health priority. *Bulletin of the World Health Organization*. 89(1): 2–2. Available at <https://doi.org/10.2471/BLT.10.085217>
- Ghosh J (Ed.). (2021). *Informal Women Workers in the Global South: Policies and Practices for the Formalisation of Women’s Employment in Developing Economies*. Routledge/Taylor & Francis Group. New York, NY.

-
- Ghosh Jand Chandrasekhar CP (2009). The costs of 'coupling': The global crisis and the Indian economy. *Cambridge Journal of Economics.*, 33(4): 725–739. Available at <https://doi.org/10.1093/cje/bep034>
- Giorgi F (2006). Climate change hot-spots. *Geophysical Research Letters.*, 33(8): L08707. Available at <https://doi.org/10.1029/2006GL025734>
- Goh A (2012). *A Literature Review of the Gender-Differentiated Impacts of Climate Change on Women's and Men's Assets and Well-Being in Developing Countries*. International Food Policy Research Institute. Washington, D.C. Available at <https://doi.org/10.2499/CAPRIWP106>
- Grossman GM and Helpman E (2001). *Innovation and Growth in the Global Economy*. MIT Press. London.
- Guha R (1994). Forestry debate and draft Forest Act: Who wins, who loses? *Economic and Political Weekly.* 29(34): 2192–2196. Available at <http://www.jstor.org/stable/4401646>
- Hallegatte S, Green C, Nicholls R and Corfee-Morlot J (2013). Future flood losses in major coastal cities. *Nature Climate Change.* 3: 802–806.
- Haque AKE, Mukhopadhyay P, Nepal M and Shammin MR (Eds.). (2021). *Climate Change and Community Resilience: Insights from South Asia*. Springer. Singapore. Available at <https://link.springer.com/content/pdf/10.1007%2F978-981-16-0680-9.pdf>
- Hepburn C (2010). Environmental policy, government, and the market. *Oxford Review of Economic Policy.* 26(2): 117–136. Available at <https://doi.org/10.1093/oxrep/grq016>
- Hirway land Jose S (2011). Understanding women's work using time-use statistics: The case of India. *Feminist Economics.* 17(4): 67–92.
- Husnain MIU, Subramanian A and Haider A (2018). Robustness of geography as an instrument to assess impact of climate change on agriculture. *International Journal of Climate Change Strategies and Management.* 10(5): 654–669. Available at <https://doi.org/10.1108/IJCCSM-03-2017-0049>
- ILO (2019). *Working on a Warmer Planet the Impact of Heat Stress on Labour Productivity and Decent Work*. International Labour Office. Geneva. Available at https://www.ilo.org/wcmsp5/groups/public/---dgreports/---dcomm/---publ/documents/publication/wcms_711919.pdf
- IMF (2021). *World Economic Outlook 2021*. International Monetary Fund. Available at <https://www.imf.org/-/media/Files/Publications/WEO/2020/Update/January/English/text.ashx>
- IPCC (2014a). *Climate Change 2014: Synthesis Report. Contribution of Working Groups I, II and III to the Fifth Assessment Report of the Intergovernmental Panel on Climate Change*. Intergovernmental Panel on Climate Change. Geneva. Available at https://www.ipcc.ch/pdf/assessment-report/ar5/syr/SYR_AR5_FINAL_full_wcover.pdf
- IPCC (2014b). *The IPCC's Fifth Assessment Report: What's in it for South Asia?* Overseas Development Institute and Climate and Development Knowledge Network. London. Available at https://cdkn.org/wp-content/uploads/2014/04/IPCC_AR5_CDKN_Whats_in_it_for_South_Asia_FULL.pdf
- IPCC (2018). *Global Warming of 1.5°C (E-edition)*. Intergovernmental Panel on Climate Change. Available at <http://www.ipcc.ch/report/sr15/>
- Izquierdo A, Lama R, Medina JP, Puig J, Riera-Crichton D, Vegh Cand Vuletin G (2019). Is the public investment multiplier higher in developing countries? An empirical investigation. Working Paper No. 26478. National Bureau of Economic Research.
- Izurieta A, Kohler Pand Pizarro J. (2018). Financialization, trade, and investment agreements: Through the looking glass or through the realities of income distribution and government policy? *Working Paper* No. 18–02. Global Development and Environment Institute (GDAE), Tufts University.
- Jerneck A (2018). What about gender in climate change? Twelve feminist lessons from development. *Sustainability.* 10(3): 627.
- Jethva, H, Torres O, Field RD, Lyapustin A, Gautam Rand Kayetha V (2019). Connecting crop productivity, residue fires, and air quality over Northern India. *Scientific Reports.* 9(1): 16594. Available at <https://doi.org/10.1038/s41598-019-52799-x>
- Kangas O and Palme J (2000). Does social policy matter? Poverty cycles in Oecd Countries. *International Journal of Health Services.* 30(2): 335–352. <https://doi.org/10.2190/NCWB-35G3-NE2T-8VQR>
- Kareiva P, Tallis H, Ricketts TH, Daily GC and Polasky S, Eds. (2011). *Natural Capital: Theory and Practice of Mapping Ecosystem Services*. Oxford University Press. Oxford.
- Karun H, Vinod Hand Chakraborty LS (2020). Did public investment crowd out private investment in India? *Economic and Political Weekly.* 55(30): 7–8.
- Kenworthy L and Malami M (1999). Gender inequality in political representation: A worldwide comparative analysis. *Social Forces.* 78(1): 235–268.
-

-
- Kiefer D and Rada C (2015). Profit maximising goes global: The race to the bottom. *Cambridge Journal of Economics*. 39(5): 1333–1350.
- Kjellstrom, T., Riggs D, Freyberg C, Lemke B, Otto M and Hyatt O (2016). Heat, human performance, and occupational health: A key issue for the assessment of Global Climate Change impacts. *Annual Review of Public Health*. 37(1): 97–112. Available at <https://doi.org/10.1146/annurev-publhealth-032315-021740>
- Kourtis IM and Tsihrintzis VA (2021). Adaptation of urban drainage networks to climate change: A review. *Science of The Total Environment*. 771: 145431. Available at <https://doi.org/10.1016/j.scitotenv.2021.145431>
- Krugman P (1991). Increasing returns and economic geography. *Journal of Political Economy*. 99(3): 483–499.
- Kulkarni A, Sabin TP, Chowdary JS, Rao KK, Priya P, Gandhi N, Bhaskar P, Buri VK, Sabade SS, Pai DS, Ashok K, Mitra AK, Niyogi D and Rajeevan M (2020a). Precipitation changes in India. In: Krishnan R, Sanjay J, Gnanaseelan C, Mujumdar M, Kulkarni A and Chakraborty S, eds. *Assessment of Climate Change over the Indian Region: A Report of the Ministry of Earth Sciences (MoES), Government of India*. Springer Nature Singapore. Singapore:47–72. Available at https://doi.org/10.1007/978-981-15-4327-2_3
- Kulkarni SH, Ghude SD, Jena C, Karumuri RK, Sinha B, Sinha V, Kumar R, Soni, VK and Khare M (2020b). How much does large-scale crop residue burning affect the air quality in Delhi? *Environmental Science & Technology*. 54(8): 4790–4799.
- Kundzewicz ZW, Kanae S, Seneviratne SI, Handmer J, Nicholls N, Peduzzi P, Mechler R, Bouwer LM, Arnell N, Mach K, Muir-Wood R, Brakenridge GR, Kron W, Benito G, Honda Y, Takahashi K and Sherstyukov B (2014). Flood risk and climate change: Global and regional perspectives. *Hydrological Sciences Journal*. 59(1): 1–28. Available at <https://doi.org/10.1080/02626667.2013.857411>
- Lahoti R and Swaminathan H (2016). Economic development and women's labor force participation in India. *Feminist Economics*. 22(2): 168–195.
- Lerner AP (1943). Functional finance and the federal debt. *Social Research*. 10(1): 38–51.
- Lobao L and Stofferahn C W (2008). The community effects of industrialized farming: Social science research and challenges to corporate farming laws. *Agriculture and Human Values*. 25(2): 219–240.
- Lyson TA and Welsh R (2005). Agricultural industrialization, anticorporate farming laws, and rural community welfare. *Environment and Planning A: Economy and Space*. 37(8): 1479–1491.
- Maasoumi E, Racine J and Stengos T (2007). Growth and convergence: A profile of distribution dynamics and mobility. *Journal of Econometrics*. 136(2): 483–508. Available at <https://doi.org/10.1016/j.jeconom.2005.11.012>
- Mage D, Ozolins G, Peterson P, Webster A, Orthofer R, Vandeweerd V and Gwynne M (1996). Urban air pollution in megacities of the world. *Atmospheric Environment*, 30(5): 681–686. Available at [https://doi.org/10.1016/1352-2310\(95\)00219-7](https://doi.org/10.1016/1352-2310(95)00219-7)
- Mahaprashasta J, Mukhopadhyay P and Pattanayak SK (2021). Willingness to pay to avoid flooding in Cuttack, India. *International Journal of Disaster Risk Reduction*. 53: 101959.
- Malone EL and Engle NL (2011). Evaluating regional vulnerability to climate change: Purposes and methods. *Wiley Interdisciplinary Reviews: Climate Change*. 2(3): 462–474.
- Marengo JA, Ambrizzi T, Alves L M, Barreto NJC, Simões Reboita M and Ramos AM (2020). Changing trends in rainfall extremes in the Metropolitan Area of São Paulo: Causes and impacts. *Frontiers in Climate*. 2: 3. Available at <https://doi.org/10.3389/fclim.2020.00003>
- Marotzke J, Semmann D and Milinski M (2020). The economic interaction between climate change mitigation, climate migration and poverty. *Nature Climate Change*. 10(6): 518–525.
- Martinez-Alier J (2002). *The Environmentalism of the Poor: A Study of Ecological Conflicts and Valuation*. Edward Elgar Publishing. Cheltenham.
- Matsa DA and Miller AR (2013). A female style in corporate leadership? Evidence from quotas. *American Economic Journal: Applied Economics*. 5(3): 136–169. Available at <https://doi.org/10.1257/app.5.3.136>
- McDonald RI, Green P, Balk D, Fekete BM, Revenga C, Todd M and Montgomery M (2011). Urban growth, climate change, and freshwater availability. *Proceedings of the National Academy of Sciences*. 108(15): 6312–6317. Available at <https://doi.org/10.1073/pnas.1011615108>
- McLeman RA and Hunter LM (2010). Migration in the context of vulnerability and adaptation to climate change: Insights from analogues. *Wiley Interdisciplinary Reviews: Climate Change*. 1(3): 450–461.
-

- Mendelsohn R (2014). The impact of climate cChange on agriculture in Asia. *Journal of Integrative Agriculture*. 13(4): 660–665. Available at [https://doi.org/10.1016/S2095-3119\(13\)60701-7](https://doi.org/10.1016/S2095-3119(13)60701-7)
- Mishra DK (2020). Agrarian crisis and neoliberalism in India. *Human Geography*. 13(2): 183–186.
- Mossman MJ (1994). Gender equality, family lLaw and access to justice. *International Journal of Law, Policy and the Family*. 8(3): 357–373.
- Mujumdar M, Bhaskar P, Ramarao MVS, Uppara U, Goswami M, Borgaonkar H, Chakrabort, S, Ram S, Mishra V, Rajeevan, M and Niyogi D (2020). Droughts and floods. In: Krishnan R, Sanjay J , Gnanaseelan C, Mujumdar M, Kulkarni A and Chakraborty S, Eds. *Assessment of Climate Change over the Indian Region: A Report of the Ministry of Earth Sciences (MoES), Government of India* . Springer Nature Singapore. Singapore: 117–141. Available at https://doi.org/10.1007/978-981-15-4327-2_6
- Nagaraj K, Sainath P, Rukmani R Gopinath R (2014). Farmers’ suicides in India: Magnitudes, trends, and spatial patterns, 1997-2012. *Review of Agrarian Studies*. 4(2): 53–83. Available at http://ras.org.in/farmers_suicides_in_india
- Nielsen L (2011). Classifications of countries based on their level of development: How it is done and how it could be done. Working Paper No. WP/11/31. International Monetary Fund. Available at <https://www.imf.org/external/pubs/ft/wp/2011/wp1131.pdf>
- Nordhaus WD (1977). Economic growth and climate: The carbon dioxide problem. *The American Economic Review*. 67(1): 341–346.
- Nursey-Bray M (2015). Gender, governance, and limate change adaptation. In: Leal Filho W Ed. *Handbook of Climate Change Adaptation*. Springer-Verlag Berlin Heidelberg:1077–1090.
- Olsson L (1993). On the causes of famine: Drought, desertification and market failure in the Sudan. *Ambio*. 22(6). 395–403.
- Omvedt G (2005). Women in governance in South Asia. *Economic and Political Weekly*. 40(44/45): 4746–4752. https://www.jstor.org/stable/4417361?seq=1#metadata_info_tab_contents
- O’Neill J (2003). The gender gap in wages, circa 2000. *American Economic Review*. 93(2): 309–314.
- Osberghaus D, Dannenberg A, Mennel Tand Sturm B (2010). The role of the government in adaptation to climate change. *Environment and Planning C: Government and Policy.*, 28(5): 834–850.
- Ostrom E (1994). Constituting social capital and collective action. *Journal of Theoretical Politics* 6(4): 527–562.
- Ostrom E (2009). A general framework for analyzing sustainability of social-ecological systems. *Science*. 325(5939): 419–422.
- Pandey A, Brauer M, Cropper ML, Balakrishnan K, Mathur P, Dey S, Turkgulu B, Kumar GA, Khare M, Beig G, Gupta T, Krishnankutty RP, Causey K, Cohen AJ, Bhargava S, Aggarwal AN, Agrawal A, Awasthi S, Bennitt F, ... Dandona L (2021). Health and economic impact of air pollution in the states of India: The Global Burden of Disease Study 2019. *The Lancet Planetary Health*. 5(1): e25–e38. Available at [https://doi.org/10.1016/S2542-5196\(20\)30298-9](https://doi.org/10.1016/S2542-5196(20)30298-9)
- Patella V, Florio G, Magliacane D, Giuliano A, Crivellaro MA, Di Bartolomeo D, Genovese A, Palmieri M, Postiglione A, Ridolo E, Scaletti C, Ventura MT, Zollo A and Air Pollution and Climate Change Task Force of the Italian Society of Allergology, Asthma and Clinical Immunology (SIAAIC) (2018). Urban air pollution and climate change: “The Decalogue: Allergy Safe Tree” for allergic and respiratory diseases care. *Clinical and Molecular Allergy*. 16(1): 20. Available at <https://doi.org/10.1186/s12948-018-0098-3>
- Patnaik P (2005). On the need for providing employment guarantee. *Economic and Political Weekly*. 40(3): 203–207.
- Patnaik P (2011). The meaning of financial liberalisation. *Mronline*. 4 June. Available at <http://mrzine.monthlyreview.org/2011/patnaik040611.html>
- Patnaik U (2002). Agrarian crisis and global deflationism. *Social Scientist*. 30(1/2): 3–30.
- Pauw P, Mbeva K and van Asselt H (2019). Subtle differentiation of countries’ responsibilities under the Paris Agreement. *Palgrave Communications*. 5(1): 86. Available at <https://doi.org/10.1057/s41599-019-0298-6>
- Pauw WP, Castro P, Pickering J and Bhasin S. (2020). Conditional nationally determined contributions in the Paris Agreement: Foothold for equity or Achilles heel? *Climate Policy*. 20(4), 468–484. Available at <https://doi.org/10.1080/14693062.2019.1635874>
- Pendergrass AG, Knutti R, Lehner F, Deser C Sanderson BM (2017). Precipitation variability increases in a warmer climate. *Scientific Reports*. 7(1): 17966. Available at <https://doi.org/10.1038/s41598-017-17966-y>

-
- Penna D, Borga M and Zoccatelli D (2013). 7.9 Analysis of Flash-Flood Runoff Response, with Examples from Major European Events. In: Shroder JF Ed. *Treatise on Geomorphology*. Academic Press. Cambridge (Massachusetts): 95–104.
- Petzold J and Magnan AK (2019). Climate change: Thinking small islands beyond Small Island Developing States (SIDS). *Climatic Change*. 152(1): 145–165.
- Pradhan BK, Ratha DK and Sarma A (1990). Complementarity between public and private investment in India. *Journal of Development Economics*. 33(1): 101–116.
- Pratt S (2015). The economic impact of tourism in SIDS. *Annals of Tourism Research*. 52: 148–160. Available at <https://doi.org/10.1016/j.annals.2015.03.005>
- Quah DT (1993). Galton's fallacy and tests of the convergence hypothesis. *The Scandinavian Journal of Economics*. 95(4): 427–443.
- Quah DT (1997). Empirics for growth and distribution: Stratification, polarization, and convergence Clubs. *Journal of Economic Growth*. 2: 27–59.
- Rakshit M (2007). Services-led growth: The Indian experience. *Money & Finance: ICRA Bulletin*. 91–126. Available at <http://gesd.free.fr/rakshit7.pdf>
- Rakshit M Ed. (2009). *Macroeconomics of Post-Reform India: Selected Papers*. Oxford University Press. Oxford.
- Rezai A, Taylor L and Foley D (2018). Economic growth, income distribution, and climate change. *Ecological Economics*. 146, 164–172.
- Robinson S (2020). Climate change adaptation in SIDS: A systematic review of the literature pre and post the IPCC Fifth Assessment Report. *WIREs Climate Change*. 11(4): e653.
- Rosenbloom D, Markard J, Geels FW and Fuenfschilling L (2020). Opinion: Why carbon pricing is not sufficient to mitigate climate change—And how “sustainability transition policy” can help. *Proceedings of the National Academy of Sciences*. 117(16): 8664–8668. Available at <https://doi.org/10.1073/pnas.2004093117>
- Rosewarne S (2010). Meeting the challenge of climate change: The poverty of the dominant economic narrative and market solutions as subterfuge. *The Journal of Australian Political Economy*. 66: 17–50.
- Roy S (2015). Empowering women? Inheritance rights, female education and dowry payments in India. *Journal of Development Economics*. 114: 233–251.
- Samuelson PA (1954). The pure theory of public expenditure. *The Review of Economics and Statistics*. 36(4): 387–389. Available at <https://doi.org/10.2307/1925895>
- Scheidel A, Temper L, Demaria F and Martínez-Alier J (2018). Ecological distribution conflicts as forces for sustainability: An overview and conceptual framework. *Sustainability Science*. 13(3): 585–598. Available at <https://doi.org/10.1007/s11625-017-0519-0>
- Schleussner CF, Deryng D, D'haen S, Hare W, Lissner T, Ly M, Nauels A, Noblet M, Pfliederer P, Pringle P, Rokitzki M, Saeed F, Schaeffer M, Serdeczny O and Thomas A (2018). 1.5°C Hotspots: Climate Hazards, Vulnerabilities, and Impacts. *Annual Review of Environment and Resources*. 43(1): 135–163. Available at <https://doi.org/10.1146/annurev-environ-102017-025835>
- Sekhri S and Storeygard A (2014). Dowry deaths: Response to weather variability in India. *Journal of Development Economics* 111: 212–223.
- Shaw LJ, Pepine CJ, Xie J, Mehta PK, Morris AA, Dickert NW, Ferdinand KC, Gulati M, Reynolds H, Hayes S N, Itchhaporia D, Mieres J H, Ofili E, Wenger N K and Bairey Merz C. N (2017). Quality and Equitable Health Care Gaps for Women. *Journal of the American College of Cardiology*. 70(3): 373–388.
- Shortridge J (2019). Observed trends in daily rainfall variability result in more severe climate change impacts to agriculture. *Climatic Change*. 157(3): 429–444.
- Singh S, Kaur M and Kingra HS (2021). Agrarian crisis and agricultural labourer suicides in Punjab. *Economic and Political Weekly*. 56(13). Available at <https://www.epw.in/journal/2021/13/special-articles/agrarian-crisis-and-agricultural-labourer-suicides.html>
- Tabari H (2020). Climate change impact on flood and extreme precipitation increases with water availability. *Scientific Reports* 10(1): 13768.
- Taylor L and Ömer Ö (2019). Race to the bBottom: Low productivity, market power, and lagging wages. *International Journal of Political Economy*. 48(1): 1–20. Available at <https://doi.org/10.1080/08911916.2018.1550951>
- Taylor L, Proaño CR, de Carvalho L de Barbosa N (2012). Fiscal deficits, economic growth and government debt in the USA. *Cambridge Journal of Economics*. 36(1): 189–204.
-

-
- Taylor MS (2005). Unbundling the pollution haven hypothesis. *Advances in Economic Analysis & Policy*. 3(2): art8. <https://doi.org/10.2202/1538-0637.1408>
- Tejani S (2016). Jobless growth in India: An investigation. *Cambridge Journal of Economics*. 40(3): 843–870.
- Thomas A, Baptiste A, Martyr-Koller R, Pringle P and Rhiney K (2020). Climate Change and Small Island Developing States. *Annual Review of Environment and Resources*. 45(1): 1–27. <https://doi.org/10.1146/annurev-environ-012320-083355>
- Thornalley, D. J. R., Oppo, D. W., Ortega, P., Robson, J. I., Brierley, C. M., Davis, R., Hall, I. R., Moffa-Sanchez, P., Rose, N. L., Spooner, P. T., Yashayev, I., & Keigwin, L. D. (2018). Anomalously weak Labrador Sea convection and Atlantic overturning during the past 150 years. *Nature*, 556(7700), 227–230. <https://doi.org/10.1038/s41586-018-0007-4>
- Titley, M. A., Butchart, S. H. M., Jones, V. R., Whittingham, M. J., & Willis, S. G. (2021). Global inequities and political borders challenge nature conservation under climate change. *Proceedings of the National Academy of Sciences*. 118(7): e2011204118. <https://doi.org/10.1073/pnas.2011204118>
- Trew BT and Maclean IMD (2021). Vulnerability of global biodiversity hotspots to climate change. *Global Ecology and Biogeography*. 30(4): 768–783. Available at <https://doi.org/10.1111/geb.13272>
- Turok I and McGranahan G (2013). Urbanization and economic growth: The arguments and evidence for Africa and Asia. *Environment and Urbanization*. 25(2): 465–482. Available at <https://doi.org/10.1177/0956247813490908>
- UN (2015). *Transforming our world: The 2030 Agenda for Sustainable Development*. UN General Assembly. <https://www.refworld.org/docid/57b6e3e44.html>
- UN (2020). *World Economic Situation and Prospects 2020*. United Nations. (Sales No. E.20.II.C.1. New York).
- UNCTAD (2006). *The Least Developed Countries Report: Developing Productive Capacities*. (United Nations publication. Sales No.E.06.II.D. New York and Geneva).
- UNDESA (2010). *The Global Policy Model: Underlying Concepts and Empirical Illustrations*. United Nations, Department of Economic and Social Affairs. New York. Available at https://www.un.org/development/desa/dpad/wp-content/uploads/sites/45/2013/12/gpm_concepts_2010.pdf
- UNDESA. (2020). *World Social Report 2020: Inequality in a Rapidly Changing World*. United Nations, Department of Social and Economic Affairs. New York.
- UNDP (2010). Human Development Report: *The Real Wealth of Nations - Pathways to Human Development* (20th anniversary edition). United Nations Development Programme. New York.
- UNDP (2019). *Human Development Report 2019: Beyond Income, Beyond Averages, Beyond Today - Inequalities in Human Development in the 21st Century*. United Nations Development Programme. New York. <https://doi.org/10.18356/838f78fd-en>
- UNEP (2021). *Adaptation Gap Report 2020*. United Nations Environment Programme. Available at <https://unepdtu.org/wp-content/uploads/2021/01/adaptation-gap-report-2020.pdf>
- UNDRR and CRED (2020). *The human cost of disasters: An overview of the last 20 years (2000-2019)*. UN Office for Disaster Risk Reduction and Centre for Research on the Epidemiology of Disasters. https://www.google.com/url?sa=t&rct=j&q=&esrc=s&source=web&cd=&cad=rja&uact=8&ved=2ahUKEwjMmVbXvYXvAhXFVIsKHXYaDIOQFjAEegQIERAD&url=https%3A%2F%2Fwww.undrr.org%2Fmedia%2F48008%2Fdownload&usq=A0vVaw3jVRNv8w_YYu2cQl5qNonN
- Vale PM (2016). The changing climate of climate change economics. *Ecological Economics*. 121: 12–19. Available at <https://doi.org/10.1016/j.ecolecon.2015.10.018>
- Valls Martínez M del C, Martín Cervantes, PA and Cruz Rambaud S (2020). Women on corporate boards and sustainable development in the American and European markets: Is there a limit to gender policies? *Corporate Social Responsibility and Environmental Management*. 27(6): 2642–2656. Available at <https://doi.org/10.1002/csr.1989>
- Virk A K and Atun R (2015). Towards universal health coverage in India: A historical examination of the genesis of Rashtriya Swasthya Bima Yojana – The health insurance scheme for low-income groups. *Public Health*. 129(6): 810–817. Available at <https://doi.org/10.1016/j.puhe.2015.02.002>
- Vrontisi Z, Fragkiadakis K, Kannavou M and Capros P (2020). Energy system transition and macroeconomic impacts of a European decarbonization action towards a below 2 °C climate stabilization. *Climatic Change*. 162(4): 1857–1875. Available at <https://doi.org/10.1007/s10584-019-02440-7>
- Watson RT, Zinyowera, MC, Moss RH and Intergovernmental Panel on Climate Change Eds (1998). *The Regional Impacts of Climate Change: An Assessment of Vulnerability*. Cambridge University Press. Cambridge.
-

- Watts N, Amann M, Arnell N, Ayeb-Karlsson S, Belesova, K, Boykoff M, Byass, Cai W, Campbell-Lendrum D, Capstick, Chambers, Dalin C, Daly M, Dasandi N, Davies M, Drummond P, Dubrow R, Ebi KL, Eckelman, M, ... Montgomery H (2019). The 2019 report of The Lancet Countdown on health and climate change: Ensuring that the health of a child born today is not defined by a changing climate. *The Lancet*. 394(10211): 1836–1878. [https://doi.org/10.1016/S0140-6736\(19\)32596-6](https://doi.org/10.1016/S0140-6736(19)32596-6)
- WEF (2018). *The Global Gender Gap Report: 2018*. World Economic Forum. Geneva.
- WEF (2021). *Global Gender Gap Report 2021*. World Economic Forum. Geneva. Available at http://www3.weforum.org/docs/WEF_GGGR_2021.pdf
- Welcomme R and Berkowitz AR (1991). Comparison between tropical and temperate ecosystems. In: Cole J, Lovett G and Findlay S, Eds *Comparative Analyses of Ecosystems: Patterns, Mechanisms, and Theories* (pp.). SpringerVerlag. New York: 356–357. Available at https://doi.org/10.1007/978-1-4612-3122-6_22
- West C and Zimmerman D H (1987). Doing gender. *Gender & Society*. 1(2): 125–151.
- Westley F, Olsson P, Folke C, Homer-Dixon T, Vredenburg H, Looibach D, Thompson J, Nilsson M, Lambin, E, Sendzimir J, Banerjee B, Galaz, V and van der Leeuw. (2011). Tipping toward sustainability: Emerging pathways of transformation. *AMBIO*. 40(7): 762.
- Wolfson MH (2000). Neoliberalism and international financial instability. *Review of Radical Political Economics*. 32(3): 369–378.
- Wong KV, Paddon A and Jimenez A (2013). Review of world Urban Heat Islands: Many linked to increased mortality. *Journal of Energy Resources Technology*. 135(2): 022101. <https://doi.org/10.1115/1.4023176>
- Wood R, Grubb M, Anger-Kraavi A, Pollitt H, Rizzo B, Alexandri E, Stadler K, Moran D, Hertwich E and Tukker A (2020). Beyond peak emission transfers: Historical impacts of globalization and future impacts of climate policies on international emission transfers. *Climate Policy*. 20(sup1): S14–S27. <https://doi.org/10.1080/14693062.2019.1619507>
- World Bank (2014). India: Women, work and employment. Report No. ACS7935. World Bank Group. Available at <http://documents.worldbank.org/curated/en/753861468044063804/India-Women-work-and-employment>
- World Bank (2020). *World Development Report 2020: Trading for Development in the Age of Global Value Chains*. World Bank Group. Washington, D.C. <https://openknowledge.worldbank.org/handle/10986/32437>
- Wynants M, Kelly C, Mtei K, Munishi L, Patrick A, Rabinovich A, Nasser M, Gilvear D, Roberts N, Boeckx P, Wilson G, Blake WH and Ndakidemi P (2019). Drivers of increased soil erosion in East Africa's agro-pastoral systems: Changing interactions between the social, economic and natural domains. *Regional Environmental Change*. 19(7): 1909–1921. Available at <https://link.springer.com/content/pdf/10.1007/s10113-019-01520-9.pdf>
- Yan H, Liu J, Huang HQ, Tao B Cao M (2009). Assessing the consequence of land use change on agricultural productivity in China. *Global and Planetary Change*. 67(1–2): 13–19. Available at <https://doi.org/10.1016/j.gloplacha.2008.12.012>
- Zhang KH and Song S (2003). Rural–urban migration and urbanization in China: Evidence from time-series and cross-section analyses. *China Economic Review*. 14(4): 386–400. Available at <https://doi.org/10.1016/j.chieco.2003.09.018>
- Zhang P, Zhang J and Chen M (2017). Economic impacts of climate change on agriculture: The importance of additional climatic variables other than temperature and precipitation. *Journal of Environmental Economics and Management*. 83: 8–31. Available at <https://www.sciencedirect.com/science/article/pii/S0095069616304910> Zhao Y, Weng Z, Chen H and Yang J (2020). Analysis of the evolution of drought, flood, and drought-flood abrupt alternation events under climate change using the daily SWAP index. *Water*. 12(7): 1969. Available at <https://doi.org/10.3390/w12071969>
- Zilberman D, Liu X, Roland-Holst D and Sunding D (2004). The economics of climate change in agriculture. *Mitigation and Adaptation Strategies for Global Change*. 9(4): 365–382.