


CSD Entry: QASKII

[Sign In \(/structures/login\)](/structures/login)[New Search \(https://www.ccdc.cam.ac.uk/structures/?ccdc-check=249f1e9c9cc40cca7bd4aa411b6ea5a5\)](https://www.ccdc.cam.ac.uk/structures/?ccdc-check=249f1e9c9cc40cca7bd4aa411b6ea5a5)

Results

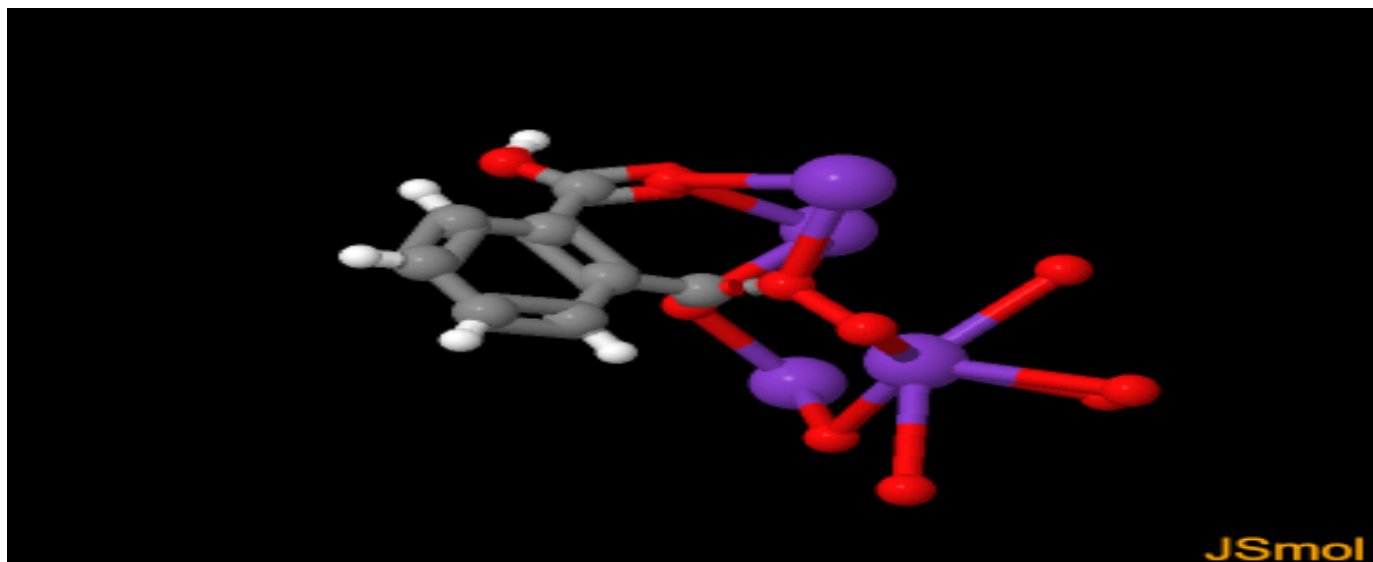
<input checked="" type="checkbox"/> Database Identifier	Deposition Number
<input checked="" type="checkbox"/> QASKII	2144346


[Download ▾](#)

QASKII : New Structure undergoing enhancement 





Space Group: $Pc2_1$ (29 (<http://it.iucr.org/cgi-bin/gotosgtable.pl?number=29&tabletype=S>)), **Cell:** a 9.6133(12)Å b 13.3124(16)Å c 6.4776(8)Å, α 90° β 90° γ 90°

3D viewer

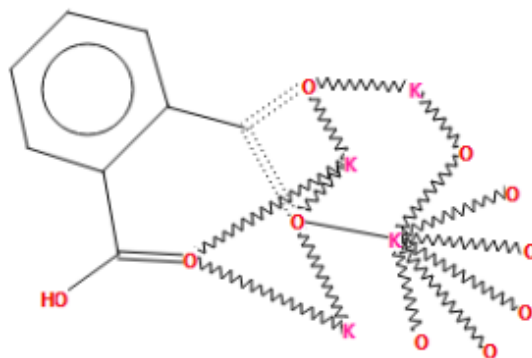



H Disorder Menu Open 

Style Labels Packing Measure

Ball and Stick  No Labels  None  None 


Chemical diagram



 View group symbols key

Additional details

Deposition Number	2144346
Data Citation	Nikita N. Harmalkar, Sunder N Dhuri, Bikshandarkoil R Srinivasan CCDC 2144346: Experimental Crystal Structure Determination, 2022, DOI: 10.5517/ccdc.csd.cc29zcg4 (//dx.doi.org/10.5517/ccdc.csd.cc29zcg4)
Deposited on	25/01/2022

Crystallographer(s)	
Crystallographer	Sunder N Dhuri  (//orcid.org/0000-0003-2732-880X)
Affiliation	School of Chemical Sciences, Goa University

Associated publications	
Nikita N. Harmalkar, Sunder N Dhuri, Bikshandarkoil R Srinivasan, <i>CSD Communication</i> , 2022	

[CCDC Home \(https://www.ccdc.cam.ac.uk/\)](https://www.ccdc.cam.ac.uk/)

[Deposit Structures \(https://www.ccdc.cam.ac.uk/deposit\)](https://www.ccdc.cam.ac.uk/deposit)

[Access Structures \(https://www.ccdc.cam.ac.uk/structures\)](https://www.ccdc.cam.ac.uk/structures)

[About This Service \(https://www.ccdc.cam.ac.uk/access-structures-terms/\)](https://www.ccdc.cam.ac.uk/access-structures-terms/)

[Terms & Conditions \(https://www.ccdc.cam.ac.uk/TermsAndConditions/\)](https://www.ccdc.cam.ac.uk/TermsAndConditions/)