

CSD Entry: XENWIA

[Sign In \(/structures/login\)](/structures/login)[New Search \(https://www.ccdc.cam.ac.uk/structures/?ccdc-check=47e7bcf2f218dd3053b06394e346494a\)](https://www.ccdc.cam.ac.uk/structures/?ccdc-check=47e7bcf2f218dd3053b06394e346494a)

Results

<input checked="" type="checkbox"/> Database Identifier	Deposition Number
<input checked="" type="checkbox"/> XENWIA	2204184

[Download ▾](#)

XENWIA : New Structure undergoing enhancement ⓘ

Space Group: C 2/c (15 (<http://it.iucr.org/cgi-bin/gotosgtable.pl?number=15&tabletype=S>)), **Cell:** a 24.489(2)Å b 8.5557(8)Å c 14.3934(14)Å, α 90° β 125.224(2)° γ 90°

3D viewer

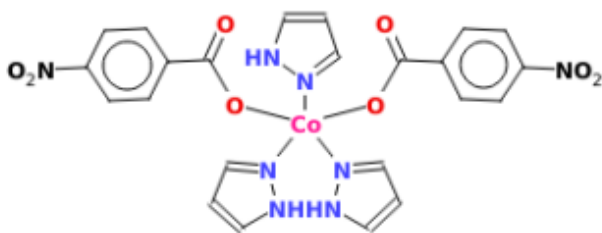
Ball and Stick ▾ No Labels ▾

▶ No Packing ▼ H DISORDER



Chemical diagram

[View group symbols key](#)

Additional details

Deposition Number	2204184
Data Citation	Kedar U. Narvekar, Neha U. Parsekar, Venkatesha R. Hathwar, Bikshandarkoil R. Srinivasan CCDC 2204184: Experimental Crystal Structure Determination, 2022, DOI: 10.5517/ccdc.csd.cc2czmqq (//dx.doi.org/10.5517/ccdc.csd.cc2czmqq)
Deposited on	27/08/2022

Crystallographer(s)

Crystallographer	Kedar U. Narvekar
Affiliation	School of Chemical Sciences, Goa University

Associated publications

Kedar U. Narvekar, Neha U. Parsekar, Venkatesha R. Hathwar, Bikshandarkoil R. Srinivasan, *CSD Communication*, 2022

[CCDC Home \(https://www.ccdc.cam.ac.uk/\)](https://www.ccdc.cam.ac.uk/)

[Deposit Structures \(https://www.ccdc.cam.ac.uk/deposit\)](https://www.ccdc.cam.ac.uk/deposit)

[Access Structures \(https://www.ccdc.cam.ac.uk/structures\)](https://www.ccdc.cam.ac.uk/structures)

[About This Service \(https://www.ccdc.cam.ac.uk/access-structures-terms/\)](https://www.ccdc.cam.ac.uk/access-structures-terms/)

[Terms & Conditions \(https://www.ccdc.cam.ac.uk/TermsAndConditions/\)](https://www.ccdc.cam.ac.uk/TermsAndConditions/)