

CSD Entry: CEJNIS

[Sign In \(/structures/login\)](/structures/login)[New Search \(https://www.ccdc.cam.ac.uk/structures/?ccdc-check=47e7bcf2f218dd3053b06394e346494a\)](https://www.ccdc.cam.ac.uk/structures/?ccdc-check=47e7bcf2f218dd3053b06394e346494a)

Results

<input checked="" type="checkbox"/> Database Identifier	Deposition Number
<input checked="" type="checkbox"/> CEJNIS	783598

[Download ▾](#)

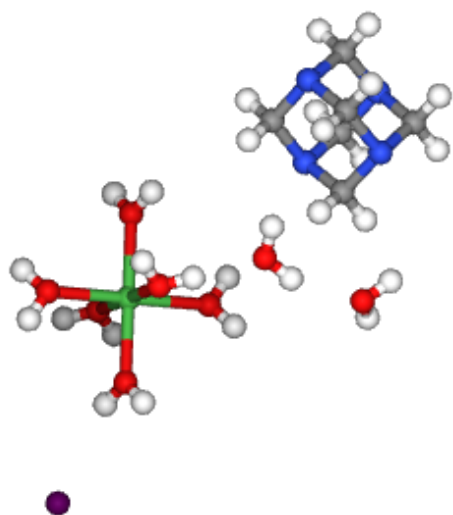
CEJNIS : New Structure undergoing enhancement ⓘ

Space Group: $P 2_1/n$ (14 (<http://it.iucr.org/cgi-bin/gotosgtable.pl?number=14&tabletype=S>)), **Cell:** a 9.2055(7)Å
 b 14.1571(9)Å c 10.7888(8)Å, α 90° β 96.971(9)° γ 90°

3D viewer

Ball and Stick ▾ No Labels ▾

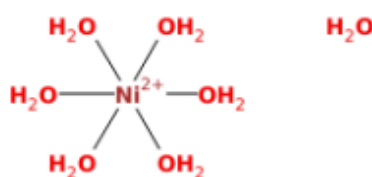
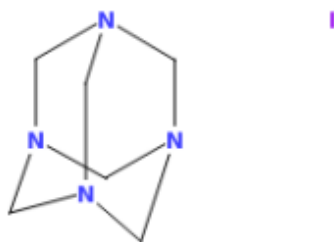
   



▶ No Packing ▼ H DISORDER



Chemical diagram

[View group symbols key](#)

Additional details

Deposition Number	783598
Data Citation	Neha U Parsekar, Kedar U Narvekar, Christian Nather, Wolfgang Bensch, Bikshandarkoil R Srinivasan CCDC 783598: Experimental Crystal Structure Determination, 2022, DOI: 10.5517/ccdc.csd.ccv9dcw (//dx.doi.org/10.5517/ccdc.csd.ccv9dcw)
Deposited on	30/06/2022

Crystallographer(s)

Crystallographer	C Nather (//orcid.org/0000-0002-6598-6726)
Affiliation	Kiel University

Associated publications

Neha U Parsekar, Kedar U Narvekar, Christian Nather, Wolfgang Bensch, Bikshandarkoil R Srinivasan, *CSD Communication*, 2022

[CCDC Home \(https://www.ccdc.cam.ac.uk/\)](https://www.ccdc.cam.ac.uk/)

[Deposit Structures \(https://www.ccdc.cam.ac.uk/deposit\)](https://www.ccdc.cam.ac.uk/deposit)

[Access Structures \(https://www.ccdc.cam.ac.uk/structures\)](https://www.ccdc.cam.ac.uk/structures)

[About This Service \(https://www.ccdc.cam.ac.uk/access-structures-terms/\)](https://www.ccdc.cam.ac.uk/access-structures-terms/)

[Terms & Conditions \(https://www.ccdc.cam.ac.uk/TermsAndConditions/\)](https://www.ccdc.cam.ac.uk/TermsAndConditions/)