

CSD Entry: CEJNUE

[Sign In \(/structures/login\)](/structures/login)[New Search \(https://www.ccdc.cam.ac.uk/structures/?ccdc-check=249f1e9c9cc40cca7bd4aa411b6ea5a5\)](https://www.ccdc.cam.ac.uk/structures/?ccdc-check=249f1e9c9cc40cca7bd4aa411b6ea5a5)

Results

| <input checked="" type="checkbox"/> Database Identifier | Deposition Number |
|---|-------------------|
| <input checked="" type="checkbox"/> CEJNUE | 783599 |

[Download ▾](#)

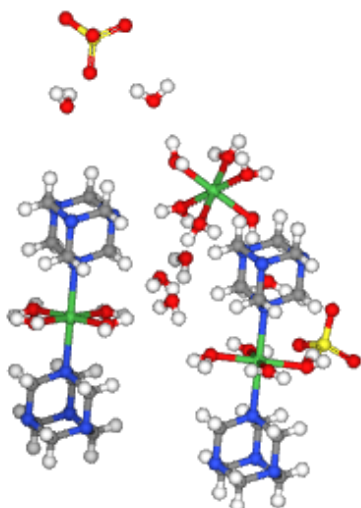
CEJNUE : New Structure undergoing enhancement ⓘ

Space Group: $P \bar{1}$ (2 (<http://it.iucr.org/cgi-bin/gotosgtable.pl?number=2&tabletype=S>)), **Cell:** a 9.2203(6)Å b 12.8799(9)Å c 16.2054(11)Å, α 101.597(8)° β 90.684(8)° γ 110.915(8)°

3D viewer

Ball and Stick ▾ No Labels ▾

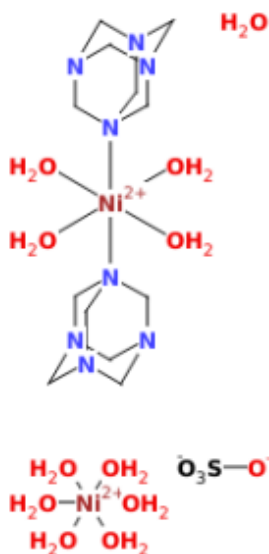
   



▶ No Packing ▼ H DISORDER



Chemical diagram



🔍 View group symbols key

Additional details

Deposition Number 783599

Data Citation Neha U Parsekar, Kedar U Narvekar, Christian Nather, Wolfgang Bensch, Bikshandarkoil R Srinivasan CCDC 783599: Experimental Crystal Structure Determination, 2022, DOI: 10.5517/ccdc.csd.ccv9ddx ([//dx.doi.org/10.5517/ccdc.csd.ccv9ddx](https://dx.doi.org/10.5517/ccdc.csd.ccv9ddx))

Deposited on 30/06/2022

Crystallographer(s)

Crystallographer C Nather ([//orcid.org/0000-0002-6598-6726](https://orcid.org/0000-0002-6598-6726))

Affiliation Kiel University

Associated publications

Neha U Parsekar, Kedar U Narvekar, Christian Nather, Wolfgang Bensch, Bikshandarkoil R Srinivasan, *CSD Communication*, 2022

[CCDC Home \(https://www.ccdc.cam.ac.uk/\)](https://www.ccdc.cam.ac.uk/)

[Deposit Structures \(https://www.ccdc.cam.ac.uk/deposit\)](https://www.ccdc.cam.ac.uk/deposit)

[Access Structures \(https://www.ccdc.cam.ac.uk/structures\)](https://www.ccdc.cam.ac.uk/structures)

[About This Service \(https://www.ccdc.cam.ac.uk/access-structures-terms/\)](https://www.ccdc.cam.ac.uk/access-structures-terms/)

[Terms & Conditions \(https://www.ccdc.cam.ac.uk/TermsAndConditions/\)](https://www.ccdc.cam.ac.uk/TermsAndConditions/)