


CSD Entry: WEWMUK

[Sign In \(/structures/login\)](/structures/login)[New Search \(https://www.ccdc.cam.ac.uk/structures/?ccdc-check=249f1e9c9cc40cca7bd4aa411b6ea5a5\)](https://www.ccdc.cam.ac.uk/structures/?ccdc-check=249f1e9c9cc40cca7bd4aa411b6ea5a5)

Results

<input checked="" type="checkbox"/> Database Identifier	Deposition Number
<input checked="" type="checkbox"/> WEWMUK	2179421

[Download ▾](#)

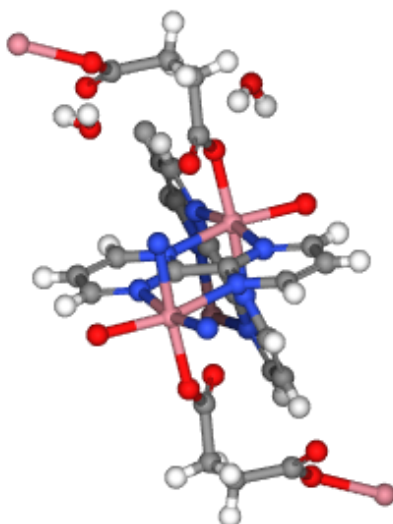
WEWMUK : New Structure undergoing enhancement 

Space Group: P 2₁/n (14 (<http://it.iucr.org/cgi-bin/gotosgtable.pl?number=14&tabletype=S>)), **Cell:** a 10.0230(6)Å b 14.1117(9)Å c 10.1074(6)Å, α 90° β 96.047(2)° γ 90°

3D viewer

Ball and Stick ▾ No Labels ▾

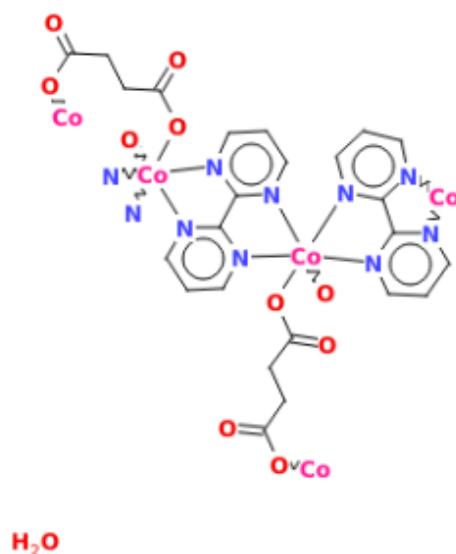
   



▶ No Packing ▼ H DISORDER



Chemical diagram



🔍 View group symbols key

Additional details

Deposition Number	2179421
Data Citation	Luann R. D'souza, Nikita N. Harmalkar, Sunder N. Dhuri CCDC 2179421: Experimental Crystal Structure Determination, 2023, DOI: 10.5517/ccdc.csd.cc2c4vx9 (//dx.doi.org/10.5517/ccdc.csd.cc2c4vx9)
Deposited on	15/06/2022

Crystallographer(s)

Crystallographer	Sunder N Dhuri (//orcid.org/0000-0003-2732-880X)
Affiliation	Goa University

Associated publications



Luann R. D'souza, Nikita N. Harmalkar, Sunder N. Dhuri, *Chemistry Select*, 2022, 7, e202203016, DOI: 10.1002/slct.202203016 (<http://dx.doi.org/10.1002/slct.202203016>)

Luann R. D'souza, Nikita N. Harmalkar, Sunder N. Dhuri, *CSD Communication*, 2023

[CCDC Home \(https://www.ccdc.cam.ac.uk/\)](https://www.ccdc.cam.ac.uk/)

[Deposit Structures \(https://www.ccdc.cam.ac.uk/deposit\)](https://www.ccdc.cam.ac.uk/deposit)

[Access Structures \(https://www.ccdc.cam.ac.uk/structures\)](https://www.ccdc.cam.ac.uk/structures)

[About This Service \(https://www.ccdc.cam.ac.uk/access-structures-terms/\)](https://www.ccdc.cam.ac.uk/access-structures-terms/)

[Terms & Conditions \(https://www.ccdc.cam.ac.uk/TermsAndConditions/\)](https://www.ccdc.cam.ac.uk/TermsAndConditions/)