


CSD Entry: LIJQAA

[Sign In \(/structures/login/\)](/structures/login/)[New Search \(https://www.ccdc.cam.ac.uk/structures/?ccdc-check=249f1e9c9cc40cca7bd4aa411b6ea5a5\)](https://www.ccdc.cam.ac.uk/structures/?ccdc-check=249f1e9c9cc40cca7bd4aa411b6ea5a5)

Results

<input checked="" type="checkbox"/> Database Identifier	Deposition Number
<input checked="" type="checkbox"/> LIJQAA	2205776

[Download ▾](#)

LIJQAA : New Structure undergoing enhancement 

Space Group: P 2₁/c (14 (<http://it.iucr.org/cgi-bin/gotosgtable.pl?number=14&tabletype=S>)), **Cell:** a 5.6626(16)Å b 9.196(2)Å c 20.664(5)Å, α 90° β 95.218(9)° γ 90°

3D viewer

Ball and Stick ▾ No Labels ▾

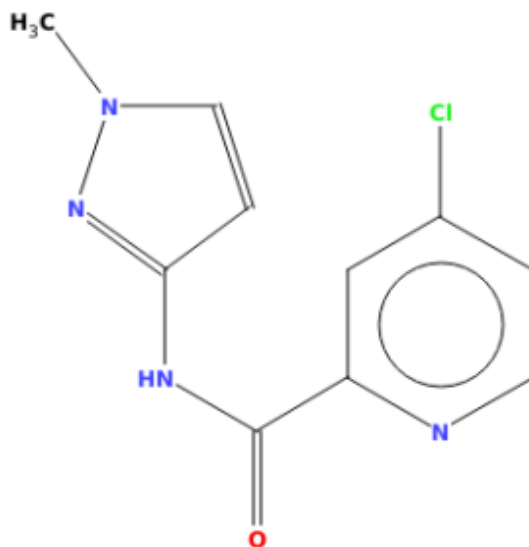
   



▶ No Packing ▼ H DISORDER



Chemical diagram

[? View group symbols key](#)

Additional details

Deposition Number 2205776**Data Citation** AYAN GHOSH, Amit Pandey, Arijit Sengupta, Velavan KATHIRVELU, Sarvesh S Harmalkar, Sunder N. Dhuri, Keisham S. Singh, Tapan K. Ghanty CCDC 2205776: Experimental Crystal Structure Determination, 2023, DOI: 10.5517/ccdc.csd.cc2d192v ([//dx.doi.org/10.5517/ccdc.csd.cc2d192v](https://dx.doi.org/10.5517/ccdc.csd.cc2d192v))**Deposited on** 19/11/2022

Crystallographer(s)

Crystallographer Sunder Dhuri ([//orcid.org/0000-0003-2732-880X](https://orcid.org/0000-0003-2732-880X))**Affiliation** Goa University

Associated publications

AYAN GHOSH, Amit Pandey, Arijit Sengupta, Velavan KATHIRVELU, Sarvesh S Harmalkar, Sunder N. Dhuri, Keisham S. Singh, Tapan K. Ghanty, *CSD Communication*, 2023

[CCDC Home \(https://www.ccdc.cam.ac.uk/\)](https://www.ccdc.cam.ac.uk/)

[Deposit Structures \(https://www.ccdc.cam.ac.uk/deposit\)](https://www.ccdc.cam.ac.uk/deposit)

[Access Structures \(https://www.ccdc.cam.ac.uk/structures\)](https://www.ccdc.cam.ac.uk/structures)

[About This Service \(https://www.ccdc.cam.ac.uk/access-structures-terms/\)](https://www.ccdc.cam.ac.uk/access-structures-terms/)

[Terms & Conditions \(https://www.ccdc.cam.ac.uk/TermsAndConditions/\)](https://www.ccdc.cam.ac.uk/TermsAndConditions/)