

## CSD Entry: HILSEE

[Sign In \(/structures/login/\)](/structures/login/)[New Search \(https://www.ccdc.cam.ac.uk/structures/?ccdc-check=47e7bcf2f218dd3053b06394e346494a\)](https://www.ccdc.cam.ac.uk/structures/?ccdc-check=47e7bcf2f218dd3053b06394e346494a)

### Results

<input checked="" type="checkbox"/> Database Identifier	Deposition Number
<input checked="" type="checkbox"/> HILSEE	2284051

[Download ▾](#)

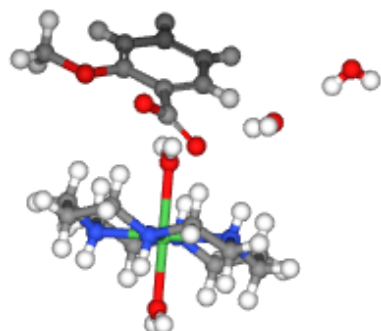
HILSEE : New Structure undergoing enhancement ⓘ

**Space Group:** P 2<sub>1</sub>/n (14 (<http://it.iucr.org/cgi-bin/gotosgtable.pl?number=14&tabletype=S>)), **Cell:** a 8.6697(2)Å b 7.8613(2)Å c 23.0083(6)Å,  $\alpha$  90°  $\beta$  91.6860(10)°  $\gamma$  90°

### 3D viewer

Ball and Stick ▾ No Labels ▾

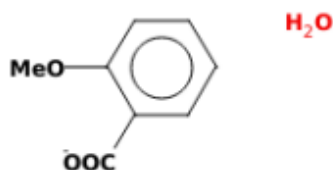
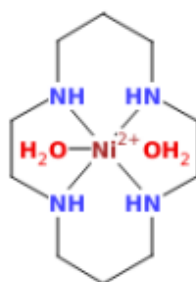
   



▶ No Packing ▼ H DISORDER



Chemical diagram

[View group symbols key](#)

Additional details

<b>Deposition Number</b>	2284051
<b>Data Citation</b>	Sunder N Dhuri, Nikita N Narmalkar, Delicia A. Barretto CCDC 2284051: Experimental Crystal Structure Determination, 2023, DOI: 10.5517/ccdc.csd.cc2gnr2z ( <a href="https://dx.doi.org/10.5517/ccdc.csd.cc2gnr2z">//dx.doi.org/10.5517/ccdc.csd.cc2gnr2z</a> )
<b>Deposited on</b>	21/07/2023

Crystallographer(s)

<b>Crystallographer</b>	Sunder Dhuri Nikita Harmalkar  ( <a href="https://orcid.org/0000-0003-2732-880X">//orcid.org/0000-0003-2732-880X</a> )
<b>Affiliation</b>	Goa University

Associated publications

Sunder N Dhuri, Nikita N Narmalkar, Delicia A. Barretto, *CSD Communication*, 2023CCDC Home (<https://www.ccdc.cam.ac.uk/>)

[Deposit Structures \(https://www.ccdc.cam.ac.uk/deposit\)](https://www.ccdc.cam.ac.uk/deposit)

[Access Structures \(https://www.ccdc.cam.ac.uk/structures\)](https://www.ccdc.cam.ac.uk/structures)

[About This Service \(https://www.ccdc.cam.ac.uk/access-structures-terms/\)](https://www.ccdc.cam.ac.uk/access-structures-terms/)

[Terms & Conditions \(https://www.ccdc.cam.ac.uk/TermsAndConditions/\)](https://www.ccdc.cam.ac.uk/TermsAndConditions/)