

## CSD Entry: HIMZUC

[Sign In \(/structures/login\)](/structures/login)[New Search \(https://www.ccdc.cam.ac.uk/structures/?ccdc-check=249f1e9c9cc40cca7bd4aa411b6ea5a5\)](https://www.ccdc.cam.ac.uk/structures/?ccdc-check=249f1e9c9cc40cca7bd4aa411b6ea5a5)

### Results

<input checked="" type="checkbox"/> Database Identifier	Deposition Number
<input checked="" type="checkbox"/> HIMZUC	2285724

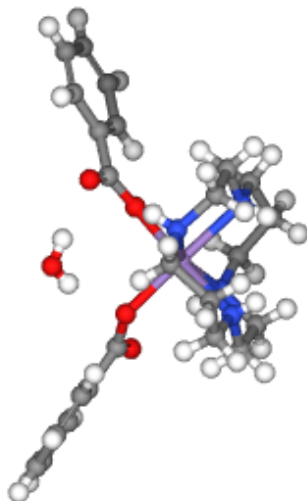
[Download ▾](#)

HIMZUC : New Structure undergoing enhancement ⓘ

**Space Group:**  $P \bar{1}$  (2 (<http://it.iucr.org/cgi-bin/gotosgtable.pl?number=2&tabletype=S>)), **Cell:**  $a$  7.7263(2)Å  $b$  12.2863(3)Å  $c$  13.8902(4)Å,  $\alpha$  88.3630(10)°  $\beta$  84.3910(10)°  $\gamma$  74.1480(10)°

### 3D viewer

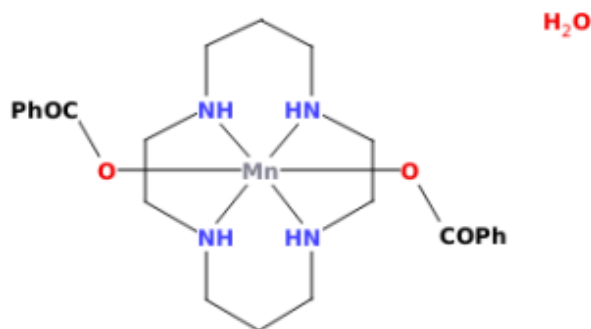
Ball and Stick ▾ No Labels ▾



▶ No Packing ▼ H DISORDER



Chemical diagram



🔍 View group symbols key

Additional details

**Deposition Number** 2285724**Data Citation** Nikita N Harmalkar, Sunder N. Dhuri CCDC 2285724: Experimental Crystal Structure Determination, 2023, DOI: 10.5517/ccdc.csd.cc2gqh1r ([//dx.doi.org/10.5517/ccdc.csd.cc2gqh1r](https://dx.doi.org/10.5517/ccdc.csd.cc2gqh1r))**Deposited on** 31/07/2023

Crystallographer(s)

**Crystallographer** Sunder N Dhuri Nikita Harmalkar ([//orcid.org/0000-0003-2732-880X](https://orcid.org/0000-0003-2732-880X))**Affiliation** Goa University

Associated publications

Nikita N Harmalkar, Sunder N. Dhuri, *CSD Communication*, 2023CCDC Home (<https://www.ccdc.cam.ac.uk/>)

[Deposit Structures \(https://www.ccdc.cam.ac.uk/deposit\)](https://www.ccdc.cam.ac.uk/deposit)

[Access Structures \(https://www.ccdc.cam.ac.uk/structures\)](https://www.ccdc.cam.ac.uk/structures)

[About This Service \(https://www.ccdc.cam.ac.uk/access-structures-terms/\)](https://www.ccdc.cam.ac.uk/access-structures-terms/)

[Terms & Conditions \(https://www.ccdc.cam.ac.uk/TermsAndConditions/\)](https://www.ccdc.cam.ac.uk/TermsAndConditions/)